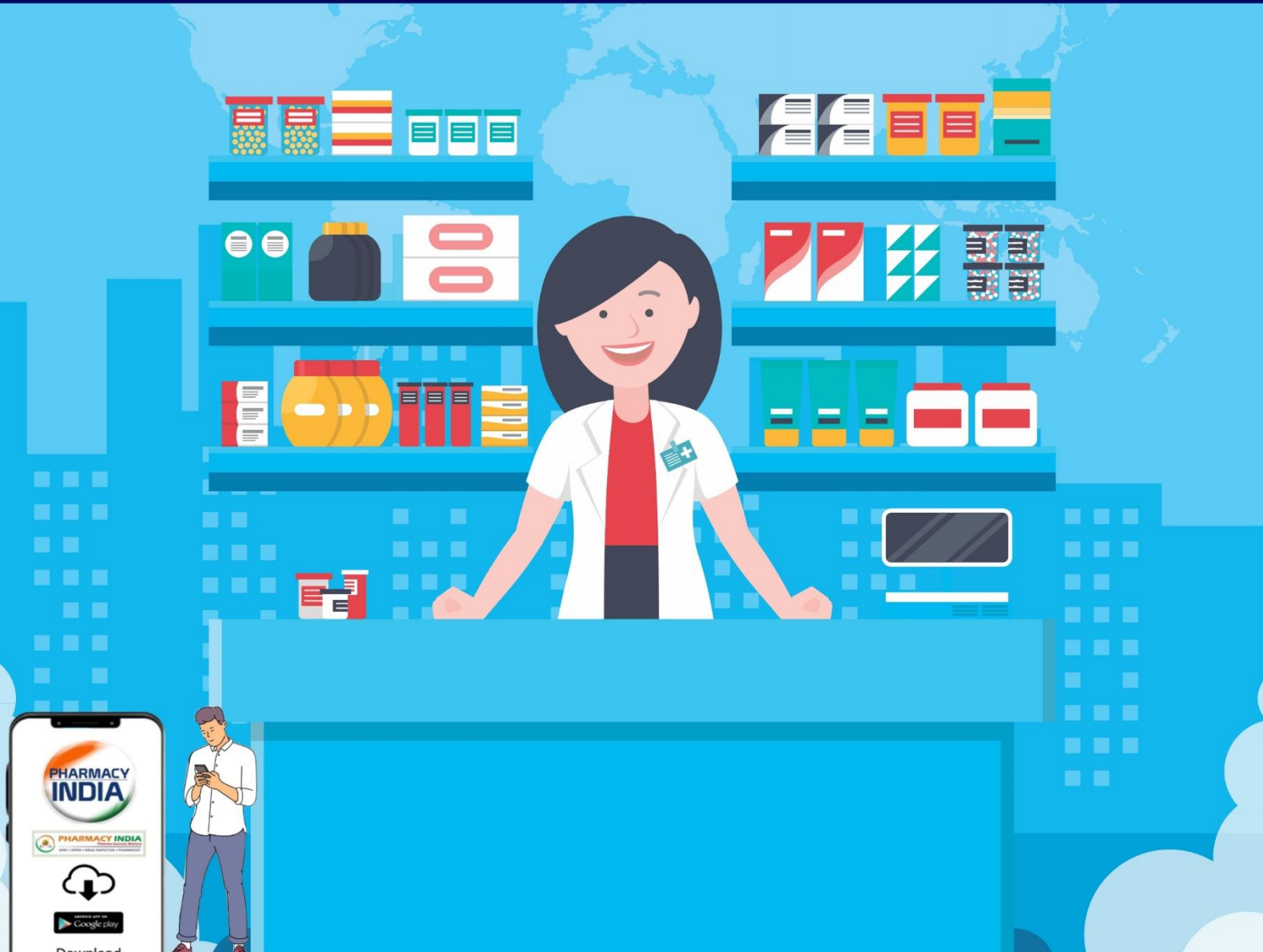


PHARMACIST

MODEL PAPER-1



TYPE **PHARMACY INDIA** IN PLAY STORE TO DOWNLOAD OUR APP

PHARMACIST MODEL PAPER -1

1. Which one of the following is removed from the Fundamental Rights of Indian Constitution by an amendment in 1978?

- (a) Right to Freedom (b) Right to Equality
(c) Right to Constitutional Remedies (d) Right to Property

2. The Constitution of India borrowed the Directive Principles from which of the following country?

- (a) The USA (b) Germany
(c) Ireland (d) The USSR

3. When was the POCSO Act passed?

- (a) 2011 (b) 2012
(c) 2016 (d) 1998

4. Who among the following called Ayyankali as 'Pulayaraja'?

- (a) Gandhiji (b) Ambedkar
(c) Sree Narayana Guru (d) Swami Vivekananda

5. The World Meteorological Day is observed on:

- (a) 5th June (b) 23rd March
(c) 8th June (d) 11th December

6. Who among the following is known as 'Lincoln of Kerala'?

- (a) Pandit Karuppan (b) Dr. Palpu
(c) Pampady John Joseph (d) Velukutty Arayan

7. The 'MelmunduKalapam' of Travancore during the 19th century was started by which of the following community?

- (a) The Arayas (b) The Ezhavas
(c) The Nadars (d) The Pulayas

8. Which of the following struggle in Kerala took place after the Indian Independence?

PHARMACIST MODEL PAPER -1

- (a) Guruvayur Satyagraha (b) Paliyam Satyagraha
(c) Vaikom Satyagraha (d) Kuttamkulam Struggle

9. Who among the following is NOT related with the Malabar Rebellion of 1921?

- (a) Kutty Ali (b) Sitikoya Thangal
(c) Variankunnath Haji (d) Ali Musliar

10. Who was the founder of the Malayalam journal 'Vivekodayam'?

- (a) Vagbhatananda Guru (b) Sankaracharya
(c) C. V. Kunhiraman (d) Kumaran Asan

11. Freeze drying is based on the principle of.....

- (a) Sublimation (b) Desiccation
(c) Fluidisation (d) Reconstitution

12. Molecules whose mirror images are non superimposable are called.....

- (a) Stereoisomers (b) Geometric isomers
(c) Conformation (d) Enantiomers

13. Quantities of electrolytes administered to patients are expressed by.....

- (a) Milliequivalent (b) Equivalent
(c) Milligram (d) Millilitre

14. Example for anionic surfactant?

- (a) Glycine (b) Sodium dodecyl sulphate
(c) Trialkyl ammonium (d) Polyethylene glycol

15. Which among the following is a prodrug?

- (a) Morphine (b) Ampicillin
(c) Acyclovir (d) Ibuprofen

16. Mechanism by which microorganism are killed in autoclaving?

 www.pharmacyindia.org |  pharmacyindia24@gmail.com |  8171313561; 9389516306



Subscribe "Pharmacy India Live Channel" on YouTube
Download PHARMACY INDIA App from Google Play store

PHARMACIST MODEL PAPER -1

- (a) Alkylation of the essential cellular metabolites
- (b) Coagulation of the cellular proteins of the microorganism
- (c) Oxidation
- (d) Precipitation

17. An anti retrovirus drug Zidovudine acts by which mechanism?

- (a) Protease inhibitors
- (b) Non nucleoside reverse transcriptase inhibitors
- (c) DNA polymerase inhibitors
- (d) Nucleoside reverse transcriptase inhibitors

18. Which among the following is the chemical test used to identify C glycosides?

- (a) Modified Borntrager's test
- (b) Kellekilliani test
- (c) Borntrager's test
- (d) Murexide test

19. Eugenol is present in.....

- (a) Ginger
- (b) Cardamom
- (c) Tulsi
- (d) Fennel

20. Formula used for calculating retail price?

- (a) $RP = (MC + CC + PM + PC) \times (1 + MAPE/100) - ED$
- (b) $RP = (MC + CC + PM + PC) \times (1 + MAPE/100) + ED$
- (c) $RP = (MC + CC + PM + ED) + (1 + MAPE/100) - PM$
- (d) $RP = (MC + CC + PM + PC) - (1 + MAPE/100) + ED$

21. Most abundant antibodies found in serum:

- (a) Ig M
- (b) Ig A
- (c) Ig D
- (d) Ig G

22. Latin term S.O.S. means:

- (a) Take alternate days
- (b) Take immediately
- (c) Take as directed
- (d) Take when necessary

PHARMACIST MODEL PAPER -1

23. Drugs coloured, coated, powdered or polished so as to conceal damage is:

- (a) Spurious drugs (b) Misbranded drugs
(c) Adulterated drugs (d) New drugs

24. The test used for the detection of Typhoid fever

- (a) Dick test (b) Widal test
(c) Mantoux test (d) Schick test

25. Creatinine clearance is used as a measurement of

- (a) Renal excretion rate (b) Glomerular filtration rate
(c) Passive renal absorption (d) Active renal secretion

Answers

1-d	2-c	3-b	4-a	5-b	6-a	7-c	8-b	9-a	10-d
11-a	12-d	13-a	14-b	15-c	16-b	17-d	18-a	19-c	20-b
21-d	22-d	23-b	24-b	25-b					

WEBSITE

pharmacyindia.co.in

GET LATEST PHARMA JOBS UPDATES

WHATSAPP

TYPE "PINDIA" & SEND US ON 8006781759 FOR PHARMA UPDATES

TELEGRAM

SCAN QR CODE TO JOIN BIGGEST PHARMA TELEGRAM GROUP (10000+ STUDENTS)

Instagram

FOLLOW PHARMAINDIA24 & GET RECENT PHARMA JOBS UPDATES

PHARMACY INDIA

5144 Posts 46.8K Followers 4 Following

DOWNLOAD "PHARMACY INDIA" APP FROM THE "GOOGLE" STORE | PHARMACIST | [youtube.com/channel/UCqur8G0pVh8M0S...](https://www.youtube.com/channel/UCqur8G0pVh8M0S...)

www.pharmacyindia.org | pharmacyindia24@gmail.com | 8171313561; 9389516306



Subscribe "Pharmacy India Live Channel" on YouTube
Download PHARMACY INDIA App from Google Play store

PHARMACIST MODEL PAPER -1

ADMISSION OPEN:- 02/06/2023
CLASSES STARTS:- 25/06/2023

ADMISSION
OPEN

NEW 
PHARMACIST
BATCHES

PHARMACY
INDIA

CALL US NOW
9536181617
8006781759

FEATURES

- LIVE CLASSES
- PRE-RECORDED LECTURES
- ONLINE TEST SERIES
- STUDY MATERIALS
- PREVIOUS YEAR PAPERS
- APTITUDE REASONING CLASSES
- SPECIAL DOUBT SESSIONS
- Q & A PRACTICE CLASSES

BEST PRICE

PACKAGE 1

RS. ~~5499/-~~ RS. 4999/-

PACKAGE 2

RS. ~~2499/-~~ RS. 1999/-

COUPON CODE:-PHARMA50

TYPE **PHARMACY INDIA** IN PLAY STORE TO DOWNLOAD OUR APP



 www.pharmacyindia.org |  pharmacyindia24@gmail.com |  8171313561; 9389516306

Subscribe "Pharmacy India Live Channel" on YouTube



Download PHARMACY INDIA App from Google Play store

PHARMACIST MODEL PAPER -1

3TRJUNA SERIES
FOR 2024-25 GPAT ASPIRANTS
FULL YEAR PROGRAMME

3MEED
GPAT CRASH COURSE
90 DAYS PROGRAMME

Online Live Classes
JOIN DRUG INSPECTOR

B.PHARMA
1-8 SEMESTER

PHARMACIST
JOIN Online Live Classes

QUICK REVISION
COURSE FOR GPAT 2024-25
REVISION SERIES
30 Days Programme

अभि MAAN
RAPID CRASH COURSE
40 DAYS PROGRAMME

PHARMACY INDIA
Download
PHARMACY INDIA
App from play store

JOIN US FOR COMPETITIVE EXAMS **SEMESTER PREPARATIONS**

 www.pharmacyindia.org |  pharmacyindia24@gmail.com |  8171313561; 9389516306

Subscribe **"Pharmacy India Live Channel"** on YouTube



Download **PHARMACY INDIA** App from **Google Play store**