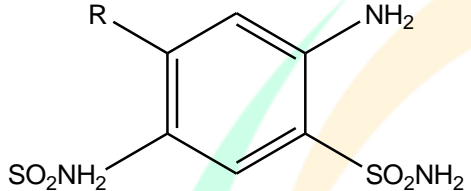


GPAT-2014

- Linctus is used to treat
 (a) Gingivitis (b) Cough (c) Mouth ulcers (d) Tooth ache
- Maximum diuretic activity of meta disulfamoyl benzene is shown when the R group is


 (a) -Cl, -CF₃ (b) -H, -Br (c) Both (d) None
- What is co-trim oxazole
 (a) Sulfamethoxazole + trimethoprim, 3:1
 (b) Sulfadoxine + pyrimethamine
 (c) Sulfamethoxazole + trimethoprim, 5:1
 (d) Sufacetamide, sulfathiazole, and sulfabenzamide
- All of the following are leaf constants EXCEPT
 (a) Vein-islet number (b) Vein- termination number
 (c) Stomatal number (d) Leaf fiber
- Zinc chloride is added to mouth wash because it acts as
 (a) Fragrance (b) Astringent (c) Cooling agent (d) Antibacterial
- The choice of route of administration plays an important role in action of directly acting cholinomimetic. Adverse effect of choline esters that may be avoided by selection of an appropriate route of administration is
 (a) Bradycardia (b) Hypotension (c) Delirium (d) Sweating
- Sieve size 80 has opening of
 (a) 0.100 mm (b) 0.125 mm (c) 0.150 mm (d) 0.180 mm
- The ideal saponification value for suppository base is
 (a) 50-100 (b) 100-150 (c) 150-200 (d) 200-500
- What class of cephalosporin's is illustrated by cefuroxime
 (a) Oximinocephalosporins (b) Aminocephalosporins
 (c) Iminocephalosporins (d) Furylcephalosporines



PHARMACY INDIA

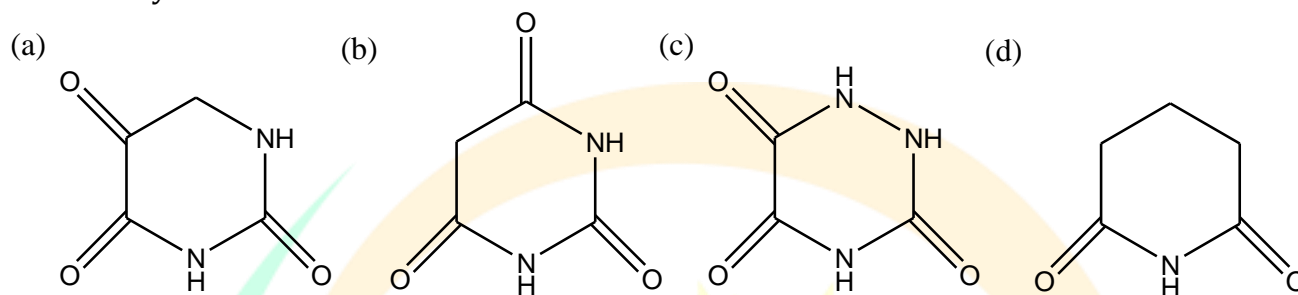
Face it | Fight it | Achieve it

10. Which of the following drug comes under Schedule C1
(a) Opium (b) Ergot (c) Fish liver oil (d) Insulin
11. Source of amla is
(a) Phyllanthus inruri (b) Terminilia chebula
(c) Terminalia Bacteria (d) Embilca officinalis
12. What is the unit of dielectric constant
(a) Dyne (b) Debey (c) Farad/meter (d) No Unit
13. Which of the following is NOT true of jet nebulisers
(a) Jet nebulisers produce mists
(b) Jet nebulisers use high velocity gas flows to generate the venturi effect to draw solution into the airflow
(c) Jet nebulisers induce decrease in temperature of the nebulizer solution during operation
(d) Jet nebulisers use ultrasonic forces to produce the aerosol
14. Of the following antibiotics, which one would be acceptable to use when treating penicillin resistant *S. pneumoniae* otitis media
(a) Azithromycin (b) Clarithromycin (c) Cefuroxime (d) Cefaclor
15. Addition of which of the following to a large volume parenteral product is not advised
(a) Active pharmaceutical ingredient (b) Preservatives
(c) Buffering agents (d) Tonicity adjusters
16. A drug suspension decomposes by zero-order kinetics with a rate constant of $2 \text{ mg mL}^{-1} \text{ month}^{-1}$ if the initial concentration is 100 mg mL^{-1} what is the shelf life
(a) 2 months (b) 3 months (c) 4 months (d) 5 months
17. The range of absolute bioavailability is
(a) 0 to 1 (b) 0 to 100 (c) -1 to 1 (d) -1 to 100
18. Antidote for paracetamol overdosing is
(a) Atropine (b) N-Acetylcysteine (c) Glutathione (d) Theophylline
19. Which one of the following drug combination is contraindicated
(a) Glycerol trinitrate and sildenafil (b) Amoxicillin and clavulanic acid
(c) Losartan and hydrochlorothiazide (d) Pyrimethamine and sulfadoxine
20. Which sugar is suitable for diabetic patient
(a) Fructose (b) Lactose (c) Mannitol (d) Sucralose

21. Headquarter of Bureau of Indian standards is situated at

- (a) New delhi (b) Mumbai (c) Kolkata (d) Chennai

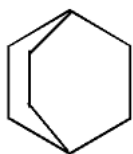
22. Identify the structure of barbituric acid



23. Ehtics for pharmacist are put forth by

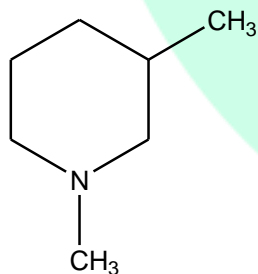
- (a) PCI (b) CDSCO (c) AICTE (d) WHO

24. What is the IUPAC name of the following compound



- (a) Bicyclo[2.2.2] octane (b) Tricyclo[2.2.2] ontane
(c) Bicyclo[2.2.0] ontane (d) Bicyclo [2.2.1] heptanes

25. What is the IUPAC name of the following compound



- (a) 1,3 -dimethylriden (b) 1,3-dimethylpiperidine
(c) 2,4 -dimethylpiperidine (d) 2,4-dimethyl-1,2,3,6-tetrahydropyridine

26. Which of the following is seed gum

- (P) Gaur gum (Q) Locust bean gum (R) Xanthan gum (S) Gellan gum
(a) P and Q (b) R and S (c) Q and R (d) P and S

27. The cancer that derived form ectoderm of endoderm of epithelial cells is

- (a) Carcinoma (b) Sarcoma (c) Leukaemia (d) Myloid



PHARMACY INDIA

Face it | Fight it | Achieve it

28. Which of the following is/are marine anticancer
(a) Trabectedine (b) Eribulin (c) Cytarabine (d) All of the above
29. Identify the compound which is derived from tryptophan
(a) Pilocarpine (b) Ephedrine (c) Muscarine (d) Quinoline
30. Opium, cocoa, poppy straw are given in
(a) Schedule H (b) Schedule X
(c) Narcotic drugs and Psychotropic substances act 1998 (d) Schedule C
31. Which of the following will be inert in NMR spectrometry
(a) ^{13}C (b) ^{31}P (c) ^2H (d) ^1H
32. What is the relationship between keto and enol tautomers
(a) Resonance forms (b) Stereoisomers
(c) Constitutional isomers (d) Different conformations of the same compound
33. Which of the following is following is true for natural killer cells
(a) They may phagocytose tumor cells
(b) Killing of cells is enhanced by interleukin-2
(c) They recognize and kill some virus-infected cells
(d) Killing of cells is stimulated by prostaglandin E2
34. Evaluation of colour of tablets is done by
(a) Reflectance spectrophotometer (b) Tristimulus colorimeter
(c) Microreflectance photometer (d) All of the above
35. The disintegration time of the effervescent tablets is
(a) 2 minutes (b) 2.4 minutes (c) 3.5 minutes (d) 5 minutes
36. Identify the false statements about magmas:
(P) The addition of suspending agents to magmas is always necessary
(Q) Magmas differ from gels in that their suspended particles are larger
(R) Magmas are two-phase systems
(S) Magmas basically are gels
(a) P and Q (b) Q and R (c) Only P (d) Only S
37. All of the following ACE inhibitors are prodrugs EXCEPT
(a) Ramipril (b) Lisinopril (c) Enalapril (d) Perindopril
38. All of the following is resistant to both true and pseudo cholinesterase enzymes
(a) Carbachol (b) Acetylcholine (c) Methacholine (d) Pilocarpine



PHARMACY INDIA

Face it | Fight it | Achieve it

39. Globule size of parenteral emulsion should be
(a) 0.1 to 0.5 μm (b) 0.5-5 μm (c) 5-10 μm (d) Any of the above
40. The objective of audit is to
(a) Improve the product quality (b) find out the fault
(c) Improve the product value (d) Find and process fault and to improve
41. is an alkaloid derived from aliphatic amino acid
(a) Reserpine (b) Nicotinic acid (c) Anabasine (d) Vinblastine
42. The drug sulpham blue is obtained fromsource
(a) Plant (b) Animal (c) Synthetic (d) Mineral
43. Phramopeial limit for acid value of carnauba wax is
(a) Below 1 (b) Below 2 (c) 2 to 7 (d) 17 to 22
44. Zona fasciculata of suprenal gland produces.....
(a) Minerlocorticoids (b) Glucocorticoids (c) Sex hormone (d) Adrenaline
45. According to Maslow's hierarchy of motives, which of the following needs must be satisfied before a person can attain esteem
(a) Safety (b) Cognitive (c) Self-actualization (d) Aesthetic
46. Actions and clinical uses of muscarinic cholinceptor agonists include which on of the following
(a) Bronchodilation (asthama)
(b) Improved aqueous humor drainage (glaucoma)
(c) Decreased gastrointestinal motility (diarrhea)
(d) Decreased neuromuscular transmission and relaxation of skeletal muscle (During surgical anesthesia)
47. Regarding the role of surfactants in pharmaceutical suspensions for oral administration which of the following statements is false
(a) Surfactants decrease the water contact angle of dispersed drug particle
(b) Surfactants promote flocculation
(c) Surfactants with high HLB stabilize oral suspensions
(d) Surfactants increase the viscosity of the continuous phase of pharmaceutical suspensions
48. Which of the following drug is NOT used in treatment of H. Pylori infection
(a) Ampicillin (b) Clarithromycin (c) Mosapride (d) Bismuth subgallate
49. The most suitable disinfectant for decontamination of HIV contaminated endoscope is
(a) 1% Sodium hypochlorite (b) 2% Glutaraldehyde
(c) 5% phenol (d) 70% ethanol



PHARMACY INDIA

Face it | Fight it | Achieve it

50. Which rule does provide the most accurate method to calculate the dose for child based on adult dose
(a) Age in months (b) Age in years (c) Weight in pounds (d) Body surface area
51. Chemokine co-receptor 5 (CCR 5) inhibitor is
(a) Enfuvirtide (b) Maraviroc (c) Raltegravir (d) Atazanavir
52. Unit of k_M value in Michaelis menten equation is
(a) S^{-1} (b) mol/L (c) $(\text{mol/L})^{-1}S^{-1}$ (d) mol/S
53. Which of the following plastic is transparent and flexible
(a) Silicon rubber (b) PVP (c) HDPE (d) PE
54. In which method an order of a fixed number of items is placed every time an inventory level falls to a predetermined point
(a) A-B-C method (b) Maximum and minimum method
(c) Open-to-buy method (d) Economic order quantity
55. Choose the option with two reducing sugars
(a) Lactose and maltose (b) Trehalose and sucrose
(c) Maltose and trehalose (d) Economic order quantity
56. The Local anesthetic with highest cardiotoxicity is
(a) Lidocaine (b) Bupivacaine (c) Levo- bupivacaine (d) Procaine
57. In supercritical fluid chromatography, if using packed columns, the most common stationary
(a) A methyl - type stationary phase bonded to silica (like DB-1) for GC
(b) An aromatic-type stationary phase bonded to silica
(c) An octyldecyl (C18) Stationary phase bonded to silica
(d) Uncoated silica
58. Tranexamic acid is
(a) Antithrombotic (b) Antifibrinolytic (c) Fibrinolytic (d) Styptic
59. Which of the antihistaminic compound has antiadrogenic effect
(a) Famotidine (b) Ranitidine (c) Nizatidine (d) Cimetidine
60. Which of the following drug is used preferentially as preanesthetic mediation
(a) Midazolam (b) Oxazepam (c) Alprazolam (d) Nitrozapam
61. Proton pump inhibitors are most effective when given
(a) Half hour before meals (b) With meal
(c) After prolonged fasting (d) along with H₂ blockers



PHARMACY INDIA

Face it | Fight it | Achieve it

62. Match compounds in Group I with inhibitory activities in Group II
- | | |
|-------------------|-------------------------|
| Group I | Group II |
| (P) Vancomycin | (1) Folate metabolism |
| (Q) Rifampin | (2) DNA synthesis |
| (R) Puromycin | (3) Protein synthesis |
| (S) Ciprofloxacin | (4) RNA synthesis |
| | (5) Cell wall synthesis |
- (a) P-5, Q-4, R-3, S-2
(b) P-4, Q-3, R-1, S-2
(c) P-4, Q-1, R-3, S-2
(d) P-5, Q-3, R-2, S-4
63. Formation of Okazaki occurs in
- (a) Transcription (b) Replication (c) Translation (d) Reverse Transcription
64. Drug used in ventricular arrhythmia is
- (a) Flecainide (b) Verapamil (c) Esmolol (d) Diltazem
65. The lipoprotein with the fastest electrophoretic mobility and the lowest TG content is
- (a) VLDL (b) HDL (c) LDL (d) Chylomicrons
66. As per schedule 'Y' of the drugs and cosmetics act, the animal toxicity study requirements for marketing of a drug depends upon tentative route and duration of administration in humans. In This context, which one of the following statements is incorrect
- (a) Single dose human use-animal toxicity for 2 weeks in 2 species
(b) Oral use for 2 weeks in humans- animal toxicity for 4 week in 2 species
(c) Aerosol use by repeated use in humans- animal toxicity for 24 weeks in 2 species
(d) Multiple daily ocular application for short duration-irrigation test in 1 species for 3 weeks
67. For determining the efficacy of sterilization in an autoclave, the spores of the following organism are used as test organisms
- (a) Bacillus cereus (b) Clostridium pefringens
(c) Bacillus stearothermophilus (d) Clostridium histolyticum
68. Which of the following pairs is mismatched
- (a) Aerobic, helical bacteria- gram negative (b) Entrics- gram negative
(c) Mycobacteria - acid fase (d) Pseudomonas -gram positive
69. In tran 1,2-demethyl cyclohexane, what is the orientation of the methyl groups
- (a) both axial (b) Both equatorial
(c) One axial one equatorial (d) Depends on chair or boat conformation
70. Sigma minus method is used in assessment of
- (a) Bioavailability (b) Absorption (c) Metabolism (d) Tissue distribution



PHARMACY INDIA

Face it | Fight it | Achieve it

71. Which of the plant family contains volatile oil in their trichome
(a) Rutaceae (b) papaveraceae (c) Umbelliferare (d) Laminaceae
72. What is proportion of citric acid: tartaric acid: sodium bicarbonate in effervescent power
(a) 1:2:3:4 (b) 2:1:3:4 (c) 1:2:4 (d) 1:2:4:4
73. Which oil is solute is alcohol
(a) Arachis oil (b) Sesame oil (c) Castor oil (d) Corn oil
74. One of the first step of the citric acid cycle is isomerization of citric acid to isoctiric acid this step is necessary because
(a) Oxidation of secondary alcohols is very difficult
(b) Reduction of secondary alcohol is very impossible
(c) Reduction of tertiary alcohols would require a very powerful oxidizing agent
(d) Oxidation of tertiary alcohols would require oxidizing agents
75. Which of the following alkyl halides would undergo SN2 reaction most rapidly
(a) CH₃CH₂-BR (b) CH₃CH₂-CL (c) CH₃CH₂-I (d) CH₃CH₂-F
76. A single dose four-way crossover, fasting, comparative bioavailability study was performed in 24 healthy, adult male subjects. Plasma drug concentrations were obtained for each subject and following results were obtained
- | Product | Dose | C _{max} (µg/ml) | T _{max} (h) | AUC _{0-∞} (µgh/ml) |
|------------------|------|--------------------------|----------------------|-----------------------------|
| IV injection | 100 | - | - | 1714 |
| Oral emulsion | 200 | 21.3 | 1.2 | 3143 |
| Capsule | 200 | 17.0 | 2.1 | 2822 |
| Reference tablet | 200 | 16.5 | 1.9 | 2844 |
- The relative bioavailability of the drug from the capsule compared to the reference tablet is
(a) 82.33% (b) 91.68% (c) 96.22% (d) 99.22%
77. All are adrenal gland over activity disorders EXCEPT
(a) Addison's disease (b) Conn's syndrome
(c) Cushing's syndrome (d) Cushing's disease
78. The oil used in a parenteral product cannot contain.....
(a) WFI (b) Parffin oil (c) Peanut oil (d) Glycerine
79. Identity the non-absorbable sature
(a) Catgut suture (b) Chromic catgut suture
(c) Silk suture (d) Polydioxanone suture
80. The relative lowering of vapour pressure is given by
(a) Raoult's law (b) Henry's law (c) Boyle's law (d) Charles law



PHARMACY INDIA

Face it | Fight it | Achieve it

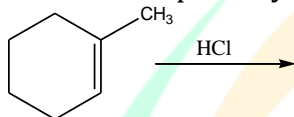
81. Identify the functional group present in meprobamate
(a) Amide (b) Ester (c) Carbamic (d) Lactam
82. Match the following
(P) Gypsum salt (1) $KAl(SO_4)_2 \cdot 12H_2O$
(Q) Epson salt (2) $FeSO_4 \cdot 7H_2O$
(R) Alum (3) $CaSO_4 \cdot 2H_2O$
(S) Green vitriol (4) $MgSO_4 \cdot 7H_2O$
(a) P-1, Q-2, R-4, S-3 (b) P-3, Q-4, R-1, S-2
(c) P-4, Q-3, R-1, S-2 (d) P-2, Q-4, R-1, S-3
83. Tinea capitis is ringworm infection of
(a) Feet (b) Groin (c) Head (d) Nails
84. Rank the following compounds in order of increasing reactivity in electrophilic aromatic Substitution reactions
(P) C_6H_6 (Q) $C_6H_5CH_3$ (R) $C_6H_5NO_2$
(a) $Q < P < R$ (b) $R < P < Q$ (c) $Q < R < P$ (d) $P < Q < R$
85. The most common waveform associated with EEG in epilepsy are Waves
(P) Spike (Q) Sharp waves (R) Nonspecific waves (S) Theta waves
(a) P and R (b) P and Q (c) Q and R (d) P, Q, R and S
86. The set representing correct order of first ionization potential is
(a) $K > Na < Li$ (b) $Be > Mg > Ca$ (c) $B > C > N$ (d) $Ge > Si > C$
87. Among the electrolytes Na_2SO_4 , $CaCl_2$, $Al_2(SO_4)_3$ and NH_4Cl , the most effective Coagulating Agent for Sb_2S_3 sol is
(a) Na_2SO_4 (b) $CaCl_2$ (c) $Al_2(SO_4)_3$ (d) NH_4Cl
88. Arrange the given acids in increasing order as per the number of carbons present in them
(P) Capric (Q) Caprylic (R) Caproic (D) Lauric
(a) $P < Q < R < S$ (b) $R < Q < P < S$ (c) $R < Q < P < S$ (d) $Q < P < R < S$
89. MBO is most closely associated with which theory of work motivation
(a) Equity theory (b) Expectancy theory
(c) Maslow's need theory (d) Goal setting theory
90. What are the three basic steps of conventional PCR
(a) Denature, anneal, & Strand displacement (b) Denature, anneal & extension
(c) Strand displacement, synthesis & release (d) Reverse-Transcription, anneal & extend
91. Rabies bodies are
(a) Negri bodies (b) Cowdry type B inclusion bodies

(c) Cowdry type A inclusion bodies (d) Bollinge bodies

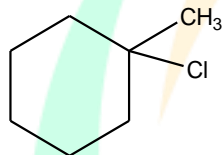
92. When glucose reacts with bromine water, the main product is
 (a) Glucaric acid (b) Glucuronic acid (c) Sorbitols (d) Gluconic acid

93. Increase in melting temperature of DNA is due to high content of
 (a) A+T (b) G+C (c) A+G (d) T+G

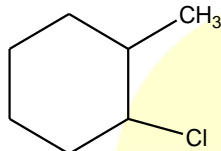
94. What will be the primary product of the following reaction



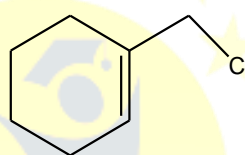
(a)



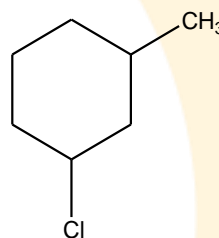
(b)



(c)



(d)



Ans c

95. The mass spectrum of a compound with an approximate MW 137 shows two equally intense peaks at m/z 136 and 138. What does this suggest
 (a) The compound is alkyl iodide (b) The compound is alkyl bromide
 (c) The compound is alkyl chloride (d) The compound is aryl fluoride

96. According to DPCO what will be the profit percentages that can be gained by retailer
 (a) 10 (b) 12 (c) 14 (d) 16

97. As per schedule M, what will be the profit percentages that can be gained by retailer
 (a) 150 m² (b) 60 m² (c) 30 m² (d) 25 m²

98. Drug of choice to treat H1N1 influenza is
 (a) Adefovir (b) Cidofovir (c) Oseltamivir (d) Tenofovir

99. Identify the correct statement

(P) Condensed tannins are polymers of flavans

(Q) Condensed tannins do not contain sugar residues

(R) Hydrolyzable tannins are polymers of gallic acid or ellagic acids

(S) Gallic acid and catechin are pseudotannins

(a) Only Q

(b) P and Q

(c) P, Q and R

(d) P, Q, R and S

100. Which of the following pairs does not correctly match the element and its oxidation number
 (a) Oxygen in H₂O₂; -2 (b) Bromine in Br₂; 0



PHARMACY INDIA

Face it | Fight it | Achieve it

(c) Sodium in NaCl; +1

(d) Sulfur in SO_3^{2-} ; +4

101. In the Reimer-Tiemann reaction..... Reacts with phenol to give the ortho-formylated product

- (a) Carbene (b) Carbocation (c) Carbanion (d) Free radical

102. Which of the following is not added to chewing tablet

- (a) Gildant (b) Disintegrant (c) Lubricant (d) Anitadhesive

103. Range of C=O stretching in enol is

- (a) 1800 cm^{-1} (b) 1710 cm^{-1} (c) 1685 cm^{-1} (d) 1655 cm^{-1}

104. Match the following phytochemicals with their source and use

- (P) Shatavrin (1) Buckwheat and citrus fruits, strengthens capillary walls
(Q) Resvertatrol (2) Broccoli and cabbage, protects against bladder cancer
(R) Glucosinolates (3) Purple grape, anti inflammatory, anticancer
(S) Rutin (4) Asparagus, galactogogue

- (a) P-4, Q-3, R-2, S-1 (b) P-4, Q-2, R-3, S-1
(c) P-3, Q-1, R-4, S-2 (d) P-2, Q-3, R-4, S-1

105. Which RNA polymerase is the only whose product are capped

- (a) RNA polymerase I (b) RNA polymerase II
(c) RNA polymerase III (d) RNA pimase

106. Match the scientist awarded with Nobel prize with their contributions

- (P) Alexander Fleming (1) GPCR
(Q) Kobilka (2) β -blocker
(R) Banting (3) Penicillin
(S) Black (4) Insulin
(a) P-4, Q-3, R-2, S-1 (b) P-4, Q-2, R-3, S-1
(c) P-3, Q-1, R-4, S-2 (d) P-2, Q-3, R-4, S-1

107. Mean arterial pressure is

- (a) Systolic pressure - Diastolic Pressure (b) $(\text{Diastolic pressure} + \text{Diastolic Prssure})/2$
(c) Diastotic alcohol + $(1/3) \times$ pulse pressure (d) Stroke valume X heart rate

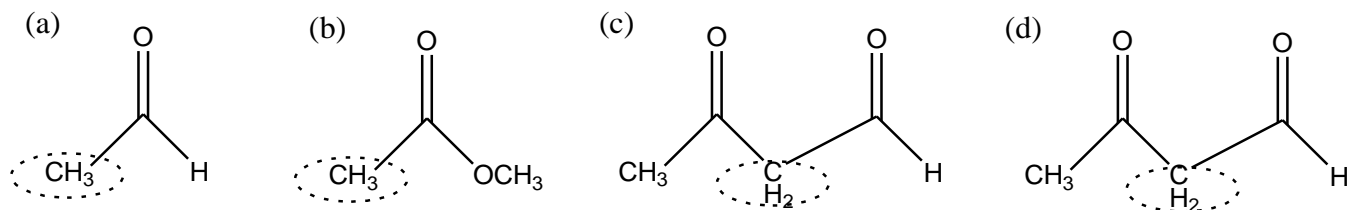
108. Eugenol is

- (a) Monoterpene alcohol (b) Sesquiterpene alcohol
(c) Aliphatic alcohol (d) Phenylpropene

109. The Vitamin required for carboxylation of pyruvate to form oxaloacetate is

- (a) Thiamine (b) Biotin (c) Pyridoxine (d) Niacin

110. Which of the following circled hydrogen is most acidic



Ans c

- 111.** The drug formulated as suspension follows order reaction
 (a) Zero (b) Pseudo Zero (c) First (d) Pseudo first
- 112.** Which diuretic causes decrease in release of insulin
 (a) Chlorothiazide (b) Ethacynic zero
 (c) Triamterene (d) Acetazolamide
- 113.** Match the following drugs with their mode of action
 (P) Methotrexate (1) Mitotic inhibitor
 (Q) Cyclophosphamide (2) Antimetabolite
 (R) Vincristine (3) Alkylating agent
 (S) Dactinomycin (4) Intercalating agent
 (a) P-4, Q-3, R-2, S-1 (b) P-2, Q-4, R-1, S-3
 (c) P-3, Q-1, R-4, S-2 (d) P-2, Q-3, R-1, S-4
- 114.** Which compound would be expected to show intense IR absorption at 3300 cm^{-1}
 (a) $\text{CH}_3\text{CH}_2\text{CH}_2\text{CH}_3$ (b) $\text{CH}_3\text{CH}_2\text{C}=\text{CH}$
 (c) $\text{CH}_3\text{C}=\text{CCH}_3$ (d) $\text{CH}_2\text{CHCH}_2\text{CH}_3$
- 115.** In the carbon NMR, in what region of the spectrum does one typically observe carbons which are part of the aromatic ring
 (a) -10-0 ppm (b) 40-60 ppm (c) 80-100 ppm (d) 120-150 ppm
- 116.** Meclofenamate belongs to which class of drug
 (a) Slicylates (b) Oxicams (c) Aryl antaranillic acid (d) p-Amino phenols
- 117.** Match the following crude with their chemical constituents
 (P) Aloe (1) Hesperidine
 (Q) Ginger (2) Palmitin
 (R) Lemon peel (3) Barbaloin
 (S) Olive oil (4) Allin
 (a) P-4, Q-3, R-2, S-1 (b) P-3, Q-4, R-2, S-1
 (c) P-3, Q-4, R-1, S-2 (d) P-3, Q-1, R-1, S-4
- 118.** Dopamine agonists with tetralene function
 (a) Ropinorole (b) Pirebidil (c) Pramipixole (d) Rotigotine



PHARMACY INDIA

Face it | Fight it | Achieve it

119. The enzyme is EC 3.2.1.1. what is this enzyme
(a) α -amylase (b) Alanine (c) Pyruvate dehydrogenase (d) DNA ligase
120. A powerful inhibitor of stomatal opening is
(a) Auxin (b) Bytokinin (c) Gibberellin (d) Abscisic acid
121. What is the renal clearance of a substance, if its concentration in plasma is 10mg, concentration in urine is 100 mg and urine flow is 2 ml/min
(a) 0.02 ml/min (b) 0.2 ml/min (c) 2ml/min (d) 20 ml/min
122. Aim of pharmacovigilance is
(a) To monitor drug toxicity (b) To monitor unauthorized drug manufacture
(c) To monitor rational use of drugs (d) To check and control drug costs
123. Phase zero studies is a/an
(P) Exploratory investigational new drug study
(Q) Human microdosing studies
(R) Step to speed up drug discovery/ development process
(S) Mandatory by FDA
(a) P and Q (b) Q and R (c) P,Q and R (d) P, Q,R and S
124. Corey-bakshi-shibata reagent is
(a) Pyridinium salt of dichromate (b) Mixture of anisole with phosphorus pentasulfide
(c) R_2CuLi , (d) Chiral catalyst derived from proline
125. Condensation of aldehyde (or ketones) with α -halo ester in presence of zinc metal to give β -hydroxy-ester is
(a) Reformatsky (b) Dieckmann condensation
(c) Claisen condensation (d) Aldol condensation

Join us on Whatsapp for latest Pharma Alerts
Type "PINDIA" Send us on 8006781759





PHARMACY INDIA

Face it | Fight it | Achieve it

Answer 2014

1-b	2-a	3-c	4-d	5-b	6-b	7-d	8-c	9-a	10-c
11-d	12-d	13-d	14-c	15-b	16-d	17-b	18-b	19-a	20-d
21-a	22-b	23-a	24-a	25-b	26-a	27-a	28-d	29-b	30-b
31-c	32-c	33-c	34-d	35-d	36-c	37-b	38-a	39-a	40-d
41-c	42-c	43-c	44-b	45-a	46-b	47-d	48-c	49-b	50-d
51-b	52-b	53-d	54-d	55-a	56-b	57-d	58-b	59-d	60-a
61-a	62-a	63-b	64-a	65-b	66-d	67-c	68-d	69-b	70-a
71-d	72-a	73-c	74-d	75-c	76-d	77-b	78-b	79-c	80-a
81-c	82-b	83-c	84-a	85-b	86-b	87-c	88-b	89-d	90-b
91-a	92-d	93-d	94-c	95-b	96-d	97-d	98-c	99-d	100-a
101-a	102-b	103-d	104-a	105-b	106-c	107-c	108-d	109-b	110-c
111-a	112-b	113-d	114-b	115-d	116-c	117-c	118-d	119-a	120-d
121-d	122-a	123-c	124-d	125-a					



PHARMACY INDIA

Face it | Fight it | Achieve it

फार्मेसी इंडिया

Join us on Whatsapp for latest Pharma Alerts

Type "PINDIA" Send us on **8006781759**



Join us on Telegram
"Pharmacy India"
For Pharma Updates





PHARMACY INDIA

Face it | Fight it | Achieve it

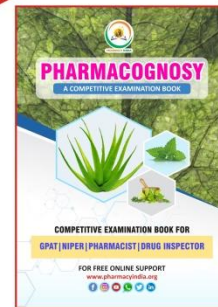
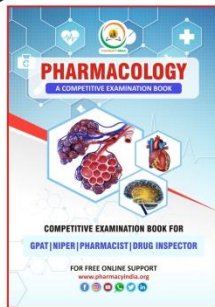


GET IT ON
Google Play

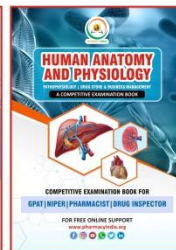
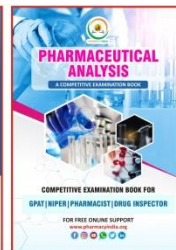
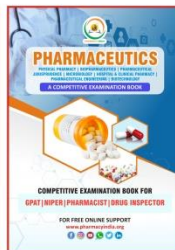
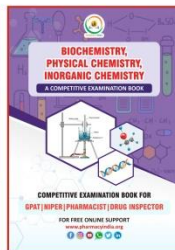
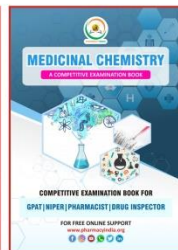
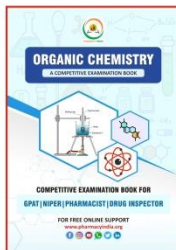
GPAT

STUDY MATERIAL PACKAGE

Price
₹3000



SET OF 8 BOOKS
WITH ONLINE TEST SERIES



ONLINE TEST SERIES

- 300+ SUBJECT WISE TEST
- 20 PREVIOUS YEAR PAPER WITH DETAILED EXPLANATION
- 20 FULL LENGTH TEST

Type PHARMACY INDIA in playstore to download the APP



8006781759, 8171313561



www.pharmacyindia.org