



GPAT-2016

1. If the given drug is absorbed by passive what will be its absorption kinetics
(a) Zero Order (b) First Order (c) Second order (d) Pseudo-zero Order
2. Which of the following is delayed type of her sensitivity reaction
(a) Arthus reaction (b) Penicillin sensitivity
(c) Tubercullin sensitivity (d) ABO incompatibility
3. Methyl ether of erythromycin is
(a) Clarithromycin (b) Dirithromycina (c) Azithromycin (d) Mithramycin
4. Ebullioscopic method is based on which of the following observation
(a) Freezing point depression (b) Boiling point elevation
(c) Osmotic pressure change (d) None of the above
5. HLB of SPAN and TWEEN surfactants may be obtained from which of the following equations
(a) $HLB = E/5$
(b) $HLB = (E+P)/5$
(c) $HLB = 20 [(1 - S)/A]$
(d) $HLB = (\text{hydrophilic group numbers}) - (\text{lipophilic group numbers}) + 7$
6. How many fundamental vibrations can be expected for C_2H_5Cl
(a) 7 (b) 11 (c) 14 (d) 18
7. Which of the antibodies provide passive immunity to newborn baby
(a) IgG (b) IgM (c) IgA (d) IgE
8. Which of the following is NOT suitable as a post-coital contraceptive
(a) Levonorgestrel 1.5mg (b) Ulipristal acetate 30 mg
(c) Mifepristone 10-25 mg (d) Mestranol 1.5 mg
9. Which of the following properties are characteristics of tannis
(P) They give a precipitate with alkaloids
(Q) They give a yellow of bluish red color with iron(III) chloride
(R) They transform hide into leather
(S) They give a pale-pink precipitate with iodine
(a) P,Q,S (b) P and Q (c) P and R (d) Only Q
10. Which of the reactive oxygen species is most dangerous to cells
(a) Singlet oxygen (b) Hydroxyl radical
(c) Superoxide (d) Peroxide





PHARMACY INDIA

Face it | Fight it | Achieve it

11. The Gibb's Phase rule
 - (a) Holds only for systems with more than components
 - (b) Predicts that a maximum of three phase can exits in one components system
 - (c) Does not count phase compositions as intensive variables
 - (d) Does not count pressure and temperature as intensive variables
12. Nerve impulse from the cochlea arrive first in which region of the brain
 - (a) Auditory cortex
 - (b) Thalamus
 - (c) Medulla oblongata
 - (d) Inferior colliculus
13. The product of a Michael reaction of a ketone enolate to ana, b-unsaturated ketone is And addition reaction occurs in a/an
 - (a) 1,5- deketone; 1,4-fashion
 - (b) α -substituted acetate; 1,2 fashion
 - (c) β - hydorxy keto;, 1,3 - fashion
 - (d) α,β -keto ester; 1,5 -fashion
14. What is the surface tension of water of at 25 °C
 - (a) 58 dyne/cm
 - (b) 68 dyne/cm
 - (c) 72 dyne/cm
 - (d) 82 dyne/cm
15. Acridine and xanthene rings are related to each other in that.....
 - (a) Xanthene is oxygen isoster of acridine
 - (b) Acridine is oxygen isoster of xanthene
 - (c) Xanthene is nitrogen isoster of aciridine
 - (d) Xanthene is sulfur isoster os acridine
16. Colligative properties depend on.....
 - (a) Structural arrangement of atoms within the molecules of solute and solvent
 - (b) The number of solute particles is solution
 - (c) The physical properties of the solute particles dissolved is solution
 - (d) Sum of the corresponding properties of individual atoms or functional group within the molecules
17. Which of the following increase systolic and diastolic pressure in normal patient
 - (a) Epineherine
 - (b) Norepinephrine
 - (c) Tyramine
 - (d) Phenylephrine
18. A large Reynold number is indication of which type of flow
 - (a) Smooth and stream line flow
 - (b) Laminar flow
 - (c) Steady flow
 - (d) Highly turbulent flow
19. Which of the following is a drug considered as potassium sparing diuretic
 - (a) Trimatrine
 - (b) Chlorthiazide
 - (c) Mannitol
 - (d) Furosemide
20. Increased number of number mitosis may be present in the following tissue EXCEPT
 - (a) Bone marrow cells
 - (b) Nails
 - (c) Hepatocytes
 - (d) Intestinal Cells
21. To which chemical class the vinca alkaloids belong





PHARMACY INDIA

Face it | Fight it | Achieve it

- (a) Tropane (b) Indole (c) Tryptophan (d) Purine
22. An antibiotic that resembles the 3' end of a charged tRNA molecule is
(a) Streptomycin (b) Vincamycin (c) Puromycin (d) Tetracycline
23. If the cohesive forces in between similar molecules are less than the adhesive forces between dissimilar molecules, a deviation in Raoult's law is observed. Here which deviation will be seen.
(a) Positive (b) Negative (c) Absent (d) Either positive or negative
24. Phenylalanine, a precursor of most of the phenolics in higher plants is a product of which one of the following pathways
(a) Shikimic acid pathway (b) Malonic acid pathway
(c) Mevalonic acid pathway (d) Methylerythritol pathway
25. Which of the reagent from the given can be used to protect ketone group
(a) Acidic methanol (b) Basic methanol
(c) Methanol + KCN (d) Phenobarbitone
26. Which of the following drugs causes less inhibition of REM sleep
(a) Zolpidem (b) Ethanol (c) Lorazepam (d) Phenobarbitone
27. The starting materials for synthesis of sulfamethoxazole are
(a) 4- Aminobenzene-1-sulfonyl amide + 3-chloro-5-methyl isoxazole
(b) 4- Aminobenzene-1-sulfonyl amide + 3-amino-5-methyl isoxazole
(c) 4- Aminobenzene-1-sulfonyl amide + 3-amino-5-methyl isoxazole
(d) 4- Aminobenzene-1-sulfonyl amide + 5-chloro-5-methyl isoxazole
28. The clinical trial registry in India is maintained by
(a) World health organization, Delhi
(b) Indian council of medical research, New Delhi
(c) Institute of Clinical Research, New Delhi
(d) Central drugs standard control Organization, New Delhi
29. Match natural products with their chemical nature
(1) Prunasin (P) Flavonolignan
(2) Silibinin (Q) Anthracene carboxylic acid
(3) Hypericin (R) Glucoside of D- mandelenitrile
(a) 1-R, 2-S, 3-Q, 4-P (b) 1-R, 2-S, 3-P, 4-Q
(c) 1-R, 2-P, 3-S, 4-Q (d) 1-P, 2-R, 3-Q, 4-S
30. What is the correct order for unsaturation in following fatty acids
(1) Palmitoleic Acid (2) Linolenic (3) Linoleic acid (4) Arachidonic acid
(a) 1>2>3>4 (b) 3>4>2>1 (c) 4>3>2>1 (d) 4>2>3>1





PHARMACY INDIA

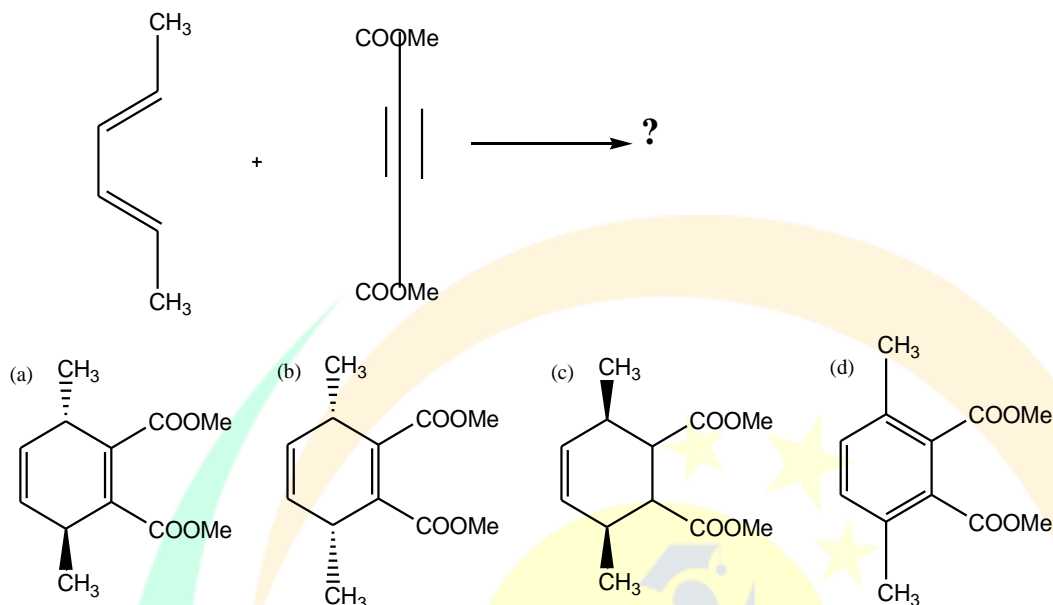
Face it | Fight it | Achieve it

31. Which of the following is NOT a component of evaporator
(a) Heat exchange (b) Vacuum separator (c) Condenser (d) Cyclone separator
32. In Parkinson's disease, there is a predominant loss of dopaminergic neurons
(a) Substantia (b) Cerebellar (c) Cerebral cortex (d) Locus ceruleus
33. At equilibrium the receptor occupancy is related to drug concentration by
(a) Henderson-Hasselbach equation (b) Hill- Langmuir equation
(c) Lineweaver-Burk equation (d) Langmuir adsorption isotherm
34. Which method is not suitable to calculate area under the curve
(a) Least square method (b) Weighing and platometry
(c) Trapezoid rule (d) Integration of curve
35. The clinical trial is being conducted with 1500 volunteers which may span on a period of 2 years as per protocol. The clinical trial is in which phase
(a) Phase 1 (b) Phase 2 (c) Phase 3 (d) Phase 4
36. Which of the following drug has not undergone a clinical trial for its use to decrease intracranial pressure
(a) Dideoxyinosine (b) Zidovudine (c) Acetazolamide (d) Nicotine
37. Colloidal dispersion have which type of rheology
(a) Newtonian (b) Pseudoplastic (c) Non- Newtonian (d) Dilatant
38. Which of the nitrogen atoms in imidazole is more basic
-
- (a) Nitrogen A (b) Nitrogen B (c) Both the N are equally basic (d) Can not be said
39. What will be the product of the given reaction

Join us on Whatsapp for latest Pharma Alerts

Type "PINDIA" and Send us on 8006781759





40. Toluene is converted to which compound in presence of CrO_3 with acetic anhydride
 (a) Benzyl alcohol (b) Benzaldehyde (c) Benzoic acid (d) Benzoin
41. Match the antimalarial drugs with their modes of action
- | | |
|--------------------------|---|
| (1) Artemisinin | (P) Inhibition of parasite mitochondrial electron Transport |
| (2) Pyrimethamine | (Q) Inhibition of heme polymerase |
| (3) Quinine | (R) Generation of oxygen and carbon-centered radicals |
| (4) Atovaquone/Proguanil | (S) Inhibition of dihydrofolate reductase |
- (a) 1-P, 2-S, 3-Q, 4-R (b) 1-Q, 2-S, 3-P, 4-R
 (c) 1-S, 2-R, 3-Q, 4-P (d) 1-R, 2-S, 3-Q, 4-P
42. The ethanolic solution contaminated with benzene showed absorbance of 0.69 at 260 nm in a 2 cm cell if the molar absorptivity of benzene in ethanol is $230 \text{ M}^{-1}\text{cm}^{-1}$, what is the concentration of benzene in the solution
 (a) 0.003 M (b) 0.0015 M (c) 0.001M (d) 0.015M
43. Which of the following is an example of Diazonium ion
 (a) $\text{CH}_3^+\text{N}_3^-$ (b) CH_3N_2^+ (c) $\text{H}_2\text{N}-\text{NH}_3^+$ (d) None of these
44. Which term describes 'The degree to which a set of inherent properties of a product system, of process fulfils requirements, the best'
 (a) Standard (b) Quality (c) Quality objective (d) State of control
45. What will be AUC value of lidocaine if the administered dose is 0.2 g and the total body clearance is 45 L/h
 (a) 4.44 h.mg/L (b) 0.0044 h.mg/L (c) 9.00 h.mg/L (d) 9000 h. mg/L



PHARMACY INDIA

Face it | Fight it | Achieve it

46. The most effective agent for treating psychosis would be
(a) Buspirone (b) Sertaline (c) Dextroamphetamine (d) Olanzapine
47. Drugs (price control) order 1995 and related orders form time to time are enforced by
(a) NPPA (b) CSIR (c) DBT (d) ICMR
48. Match the drugs with plant from which they are isolated and their families
(1) Artemisinin (P) Periwinkle (i) Dioscoreaceae
(2) Diosgenin (Q) May apple (ii) Apocynaceae
(3) Etoposide (R) Sweet wormwood (iii) Berberidaceae
(4) Vinblastine and Vincristine (S) Maxican wild yam (iv) Asteraceae
(a) 1-R-iv, 2-S-i, 3-Q-iii, 4-P-ii (b) 1-s-iv, 2-R-i, 3-Q-iii, 4-P-ii
(c) 1-Q-iii, 2-R-ii, 3-Q-i, 4-P-iv (d) 1-R-iv, 2-S-iii, 3-Q-i, 4-P-ii
49. Which of the following is an irreversible phenomenon related to stability of emulsion
(a) Craking (b) Creaming (c) Coalescence (d) Flocculation
50. If a drug is highly bound to plasma proteins, what might be its reason or consequence
(a) It most likely carried by α -glycorprotien (b) It has a high renal clearance
(c) It has a large Vd (d) It is a likely candidate for drug interactions
51. TGA is regulatory body of which country
(a) Europe (b) Australia (c) Canada (d) UK
52. Which prostaglandins have a keto function at C-9 and a α - Hydroxyl group at C-11 in prostanoid acid backbone
(a) PGA (b) PGI (c) PGE (d) PGF
53. Following intravenous administration, drugs are distributed fastest to
(a) The skin, kidney, and brain (b) The liver, kidney, and brain
(c) The liver, adipose, and brain (d) The liver, kidney, and adipose
54. Which of the following agents act as hypoglycemic as ATP sensitive potassium channel blocker
(a) Mitiglinide (b) Pioglitazone (c) Liraglutide (d) Sitagliptin
55. Carabildide shows strong IR absorption in which of the following range in cm^{-1}
(a) 3200-3600 (b) 1640-1690 (c) 1000-1300 (d) 2210-2260
56. Match the drugs with their adverse effects
(1) Cyclophosphamide (P) Pulmonary fibrosis
(2) Doxorubicin (Q) Nephrotoxicity, ototoxicity
(3) Bleomycin (R) Acute hemorrhage cystitis
(4) Cisplatin (S) Cardiotoxicity
(a) 1-S, 2-R, 3-P, 4-Q (b) 1-P, 2-Q, 3-S, 4-R





PHARMACY INDIA

Face it | Fight it | Achieve it

(c) 1-P, 2-S, 3-Q, 4-R

(d) 1-R, 2-S, 3-P, 4-Q

57. Which one of the following technique is used to determine glass transition temperature
(a) X-ray diffractometry (b) Raman spectroscopy
(c) Differential scanning calorimetry (d) Atomic forced microscopy
58. Within how many days a pharmacist should dispense diluted aqueous mixtures
(a) 7 days (b) 14 days (c) 21 days (d) 30 days
59. What molecular feature is penicillin G is said o mimic
(a) Disaccharide of N-acetylmuranicanidN- actylgulcosamine
(b) N-acetylneuraminic acid
(c) The pentapeptide moiety of five glycine units
(d) The dipeptide moiety D-ala-D-Ala
60. If a drug is known to be distributed into total body water, how many milligrams are needed to obtain an initial plasma level of 5mg/L in a patient weighting 70 kg
(a) 210 (b) 150 (c) 50 (d) 35
61. What does 'pharmacokinetical compartment' mean
(a) Part of the body water which is located is the vascular system
(b) Total body water
(c) Plasma, intracellular fluid, together , anatomical water compartments where drug is absorbed
(d) Part of the body water in which the change of a drug concentration has the same kinetics
62. The resistance to macrolide antibiotics by of gram positive organism is developed due to
(a) Decreases uptake of antibiotics
(b) Synthesis of esterase enzyme that hydrolyzes lactone ring of macrolide
(c) Methylation of 50S subunit at the antibiotic binding site
(d) Increased metabolism of antibiotic
63. Why acetyl chloride undergoes nucleophilic substitution at a faster rate than methyl acetate
(a) The ester is more sterically hindered than the acid chloride
(b) The chloride ion is a better leaving group than methoxide
(c) The acid chloride is more sterically hindered than the ester
(d) The methoxide ion is a better leaving group than chloride
64. In order to make a generic substitution ; a pharmacist must do also act as a hydrogen bond acceptor
(a) Notify the patient of the substitution
(b) Charge the same or lower price for the generic
(c) Place the brand name on the label and write "substitute for"
(d) Obtain the physician's consent to substitute the product





PHARMACY INDIA

Face it | Fight it | Achieve it

65. Which of the following groups can form ionic interactions and also act as a hydrogen bond acceptor
(a) Hydroxyl group (OH) (b) Carboxylate group (RCOO)
(c) Aminonium group (RNH³⁺) (d) Ketone (C=O)
66. Which of the following drug does not give pink colour with ruthenium red
(a) Agar (b) Guar gum (c) Pectin (d) Isabgol
67. The IUPAC name, 4-Amino-N(5,6-dimethoxy-4-pyrimidinyl) benzene sulfonamide belong to which generic drug
(a) Sulfadimidine (b) Sulfadoxine (c) Sulfalene (d) Sulfamerazine
68. Method of inspections used to determine the absorption rate constants. It assumes that
(P) K_a is at least five times greater activities
(Q) Absorption is complete (i.e. > 95% complete) at the time of peak concentration
(R) Both Absorption and elimination are first order processes
(a) P and Q (b) Q and R (c) Q and R (d) P and R
69. The key concept of Total Quality Managements (TQM) is
(a) Total control of all quality related activities
(b) Commitment of all employees to quality improvement and having team meetings
(c) Top management's direct involvement
(d) The Introduction of the ISO 9000 Series
70. What strategy of drug design is frequently used on complex lead compounds derived from natural products
(a) Extension (b) Simplification (c) Rigidication (d) Conformational block
71. Which type of photon detector is commonly microfabricated into arrays of 500 or More individual detectors
(a) Photocell (b) Phototube (c) Photomultiplier tube (d) Photodiode
72. Which of the following is a phase II drug metabolism reaction associated with genetic polymorphism
(a) Glucuronidation (b) Acetylation (c) Reduction (d) Glutathione conjugation
73. A gram-negative diplococcus associated with urinary tract infection, pelvic inflammatory disease and conjunctivitis, meningitis is
(a) Neisseria gonorrhoeae (b) Chlamidia Trachomatis
(c) Hemophilus influenza (d) Streptococcus pneumoniae
74. Pregnancy test kits are designed to detect
(a) Estrogen (b) Human chorionic gonadotropin





PHARMACY INDIA

Face it | Fight it | Achieve it

- (c) Follicle-stimulating hormone (d) Luteinizing hormone
75. A drug of low water solubility when given orally is absorbed up to 90% of the administered dose. The drug belongs to which class according to BCS classification
(a) Class IV (b) Class III (c) Class II (d) Class I
76. Which problem can arise if the material to be compressed into tablet tends to adhere to die walls
(a) Picking (b) Sticking (c) Capping (d) Marbling
77. What is the half life of Tc-99m
(a) 66 years (b) 66 hours (c) 6 hours (d) 60 minutes
78. Eudragits are
(a) Phthalate polymers (b) Cellulose polymers
(c) Acrylate polymers (d) Amide polymers
79. Hairy root cultures for production of secondary metabolites are induced by transforming plant cell with which organism
(a) Bacillus thuringiensis (b) Agrobacterium tumefaciens
(c) Agrobacterium rhizogenes (d) Virus
80. Rank the following substrates in order of decreasing reactivity in an S_N1 reaction
(P) C_2H_5Br (Q) $C_6H_5(CH_3)_2CBr$ (R) $(CH_3)_3CBr$ (S) $(CH_3)_2CHBr$
(a) $P > Q > R > S$ (b) $P > S > Q > R$ (c) $Q > R > S > P$ (d) $Q > R > S > P$
81. Which of the following statements is correct for gram positive bacteria
(a) Cell wall has a thin peptidoglycan layer
(b) Cell wall lipid content is very low and smaller volume of periplasm
(c) Lipopolysaccharide layer is present
(d) Teichoic acid is present
82. The terms upper consolute temperature and lower consolute temperature are related to which phenomenon
(a) Cloud point (b) Critical solution temperature
(c) Kraft point (d) Phase inversion
83. Match the alkaloids with their synthesis precursors.
(1) Pilocarpine (P) Nucleotide
(2) Connine (Q) Tryptophan
(3) Caffeine (R) Histidine
(4) Yohimbine (S) Acetate derived
(a) 1-S, 2-R, 3-P, 4-Q (b) 1-S, 2-Q, 3-P, 4-R
(c) 1-P, 2-R, 3-S, 4-Q (d) 1-R, 2-S, 3-P, 4-Q





PHARMACY INDIA

Face it | Fight it | Achieve it

84. Which of the following transitions in will be shifted to longer wavelength in response to increase in solvent polarity
(a) $\sigma \rightarrow \sigma^*$ (b) $\sigma \rightarrow \pi^*$ (c) $\pi \rightarrow \pi^*$ (d) $n \rightarrow \pi^*$
85. Bacillus subtilis is used as test organism to connect assay of which antibiotic
(a) Doxycycline (b) Streptomycin (c) Penicillin (d) Erythromycin
86. In NMR spectroscopy, the product of the nuclear 'g' factor (g_N) the nuclear magneton (μ_N) and the magnetic field strength (B_0) gives the.....
(a) Energy of transition from α to β state (b) Chemical shift
(c) Spin-spin coupling constant (d) Magnetic ratio
87. Match the following enzymes/protein with specific functions in DNA replication
(1) Helicases (P) Processive unwinding of DNA
(2) DNA Primases (Q) Seals the single strand
(3) DNA ligases (R) Relieves torsional strain
(4) Topoisomerases (S) Initiates synthesis of RNA Primers
(a) 1-P, 2-Q, 3-R, 4-S (b) 1-P, 2-S, 3-Q, 4-R
(c) 1-S, 2-Q, 3-P, 4-R (d) 1-P, 2-Q, 3-R, 4-S
88. When morphine is heated at 140°C under pressure, with strong HCL, it converts into:
(a) Morphine (b) Apomorphine (c) Codeine (d) Oxycodone
89. All of the following are gram-negative rods EXCEPT
(a) Clostridium (b) Escherichia (c) Salmonella (d) Shigella
90. The cells which secrete male sex hormone testosterone are:
(a) Crypts of Lieberkuhn (b) Escherichia (c) Salmonella (d) Shigella
91. If QA and QC are compared
(a) Both are literally the same
(b) QA is a higher activity in the management hierarchy
(c) QA is a higher activity in the management hierarchy
(d) QA is done by the production person and QC is done by analyst
92. Bio availability of drug refers to
(P) The ratio of drug excreted unchanged in urine to that excreted as metabolites
(Q) Fraction of the drug reaching the target to produce the action
(R) The length of time an administered drug is available for action
(S) Percentages of administered dose that reaches systemic circulation in the unchanged form
(a) Only P (b) Q and R (c) R and S (d) Only S
93. Which of the following is a side effect of ACE inhibitors
(a) Sinus congestion (b) Angina (c) Cough (d) Hypokalemia





PHARMACY INDIA

Face it | Fight it | Achieve it

94. Which one of the following is a solid dosage form excipient which can play the role of a diluent, a disintegrant, a glidant, a lubricant and a pore/ channel former\
- (a) Lactose (b) Microcrystalline cellulose
(c) Ethyl cellulose (d) Eudragit RL 100
95. Match product, source and plant part form which they are obtained
- | | | |
|---------------|----------------------|------------|
| (1) Bacosides | (P) Aciacia catechu | (i) Herb |
| (2) Cutch | (P) Rubiaticorium | (ii) Leaf |
| (3) Henna | (R) Bacopamonnieri | (iii) Root |
| (4) Alizarm | (S) Lawsoniainternis | (iv) Stem |
- (a) 1-R-ii, 2-S-I, 3Q-Q-iii, 4-P-iv (b) 1-R-I, 2-P-iv, 3-S-ii, 4-Q-i
(c) 1-Q-ii, 2-P-iii, 3-S-iv, 4-R-I (d) 1-S-ii, 2-R-iv, 3-P-I, 4-Q-i
96. In polarography.....current must be blocke (d)
- (a) Residual (b) Migration (c) Diffusion (d) None
97. The propellant commonly used in topical aerosols is
- (a) Trichloromonfluoromethane (b) Trifluromonfluroethane
(c) Dichlordifluromthane (d) Isopropyl alcohol
98. Which is the first line drug for the treatment of generalized seizures
- (a) Valproic acid (b) Anhydortetracycline (c) Carbamazepine (d) Doxycycline
99. Tetracyline in basic solution is usstable and forms which product
- (a) Epithracycline (b) Anhydrotetracycline
(c) Isotetracycline (d) Doxycycline
100. The location of the blood-brain barrier is considered to be
- (a) At the level of the brain capillaries (b) At the level of gila
(c) At the level of neurons (d) At the level of dendrites
101. Match the following plant product with their chemical class
- | | |
|---------------|-----------------------------------|
| (1) b-amyryn | (P) Alkaloid secondary alcohol |
| (2) Sqaulene | (Q) Alkaloid, phenol |
| (3) Morphine | (R) Triterpene, secondary alcohol |
| (4) Ephedrine | (S) Asyclic triterpene, polyene |
- (a) 1-R, 2-S, 3-Q, 4-P (b) 1-S, 2-Q, 3-P, 4-R
(c) 1-P, 2-S, 3-Q, 4-R (d) 1-R, 2-S, 3-P, 4-Q
102. The following drug metabolizing reaction in entirely non-microsomal:
- (a) Glucuronide conjugation (b) Acetylation
(c) Oxidation (d) Reduction





PHARMACY INDIA

Face it | Fight it | Achieve it

- 103.** Which of the following methods is used to determine whether a process functions properly for its intended use
(a) Capacity (b) Inspection (c) Validation (d) Design Review
- 104.** What is the significance of term overfill
(a) It is similar to overage
(b) It is the excess volume to be filled in containers as vials, ampoules to avoid loss by degradation
(c) It is the excess filling of container as vials, ampoules to avoid the loss during case
(d) It is violation of packaging regulation as per GMP
- 105.** Identify the false statements
(a) A characteristic of drugs eliminated by zero order kinetic process is that the half-life is not constant
(b) The plasma drug concentration versus time curve for a drug eliminated by zero order kinetics is linear
(c) A fundamental characteristic of all first order pharmacokinetic processes is that the rate of the process is proportional to drug concentration
(d) A characteristic of absorption by lipid diffusion is its saturability at high drug concentrations
- 106.** What is the required floor area for running a pharmacy for wholesale or distribution
(a) 6 sq meters (b) 10 sq meters (c) 15 sq meters (d) 30 sq meters
- 107.** Bioavailability differences among drug's oral formulations are most likely to occur if it
(a) Is freely water soluble (b) Is incompletely absorbed
(c) Is completely absorbed (d) Undergoes little first-pass metabolism
- 108.** Match the drug with their receptor profiles
(1) Ergotamine (P) 5-HT_{2A} antagonist
(2) Ondansetron (Q) 5-HT₁ partial agonist /antagonist
(3) Sumatriptan (R) 5-HT₃ antagonist
(4) Ketanserin (S) 5-HT_{1D} agonist
(a) 1-R, 2-S, 3-Q, 4-P (b) 1-Q, 2-R, 3-S, 4-P
(c) 1-R, 2-S, 3-P, 4-Q (d) 1-S, 2-R, 3-P, 4-Q
- 109.** OROS is a technology developed for/as
(a) Oral release rapid onset system (b) Orally rapid disintegrating tablets
(c) Osmotic controlled oral drug delivery system (d) Transdermal drug delivery system
- 110.** Match the schedules with the particulars they describe
(1) Schedule T (P) Standards for patent or proprietary medicines
(2) Schedule U (Q) Requirements/ guidelines to import &/or manufacture new Drug
(3) Schedule V (R) GMP practices for Ayurvedic, siddha & Unani medicines





PHARMACY INDIA

Face it | Fight it | Achieve it

- (4) Schedule Y
(a) 1-R, 2-S, 3-Q, 4-P
(c) 1-R, 2-S, 3-P, 4-Q
- (S) Particulars to be shown in the manufacturing records
(b) 1-S, 2-Q, 3-P, 4-R
(d) 1-S, 2-R, 3-P, 4-Q

- 111.** Which of the following UV rays cause cancer
(a) UVA (b) UVB (c) UVC (d) All of the above
- 112.** Which are the types of antibodies involved in hypersensitivity reactions
(a) LgG and LgD (b) LgG and LgM (c) LgD and LgA (d) LgM and LgD
- 113.** The term used to describe unequal distribution of colour on a tablet is
(a) Chipping (b) Mottling (c) Lamination (d) Double impress
- 114.** Match the events in tablet manufacturing process with the effects found in tables
(1) Rapid drying of coated tablets after coating (P) Increased distegration time
(2) Use to highly viscous solution (Q) Weight variation
(3) Improper feed rate form hopper (R) Orange peel
(4) Excessive compression force (S) Blistering
(a) 1-R, 2-S, 3-Q, 4-P (b) 1-R, 2-S, 3-P, 4-Q
(c) 1-S, 2-R, 3-Q, 4-P (d) 1-R, 2-P, 3-S, 4-Q
- 115.** 2', 3'-Didehydro-3'-deoxy thymidine is the chemical name of which of following antiviral agents
(a) Didenosine (b) Zidovudine (c) Stavudine (d) Zalcitabine
- 116.** Oseltamivir is antiviral drug. It produces its action by inhibiting which enzymes
(a) DNA polymerase (b) Neuraminidase
(c) Praziquantel (d) Ivermectin
- 117.** Drug Z is a depolarizing neuromuscular blocking agent effective for the treatment of pinworm. Identify drug Z
(a) Phyrantel (b) Paramomycin (c) Integrase (d) Protease
- 118.** Metheneamine used for UTI is a prodrug. How and to what is is converted into
(a) At low pH of Urine, to formaldehye (b) At high pH of urine, to aminosalicylic acid
(c) At low pH of Urine, to amonosalicylic acid (d) At high pH of urine, to formaldehye
- 119.** The correct order for the basic features of a mass spectrometer is
(a) Acceleration, deflection, detection, ionization
(b) Ionization, Acceleration, deflection, detection
(c) Acceleration, ionization, deflection, detection
(d) Acceleration, deflection, ionization, detection
- 120.** In NMR spectrum, a signal is observed as triplet. What will be the ratio of relative peak areas in this signal





PHARMACY INDIA

Face it | Fight it | Achieve it

(a) 1:1:1

(b) 1:2:1

(c) 1:3:1

(d) 1:4:1

121. At pH 5, the ratio of the protonated to unprotonated forms of morphine pKa 7 would be
(a) 1:100 (b) 1:10 (c) 10:1 (d) 100:1

122. What structure is formed if the acyl side chain of penicillin is hydrolysed
(a) Penicillenic acids (b) Penillic acids
(c) 7-Aminopenicillanic acid (d) 6—Aminopenicillanic acid

123. All of the following except one are subject to therapeutic drug monitoring, Which one
(a) Phenytoin (b) Lithium (c) Gentamicin (d) Losartan

124. Thiamine deficiency causes decreased energy production because
(a) It is required for the process of transamination
(b) It is a co-factor in oxidative reduction
(c) It is a co-enzyme for transketolase in pentose phosphate pathway
(d) It is a co-enzyme for pyruvate dehydrogenase & alpha ketoglutarate dehydrogenase

125. Which of the following drugs are often found in both prescription and over-the-counter nasal decongestants
(a) Alpha 2 agonists (b) Alpha 1 agonists
(c) Alpha 1 antagonists (d) Beta 2 agonists

ANSWER 2016

1-b	2-c	3-a	4-b	5-c	6-b	7-c	8-d	9-c	10-b
11-b	12-c	13-a	14-c	15-a	16-b	17-c	18-d	19-a	20-b
21-b	22-c	23-b	24-a	25-a	26-a	27-b	28-b	29-c	30-d
31-d	32-a	33-b	34-a	35-c	36-c	37-c	38-b	39-	40-b
41-d	42-b	43-b	44-b	45-a	46-d	47-a	48-a	49-b	50-d
51-b	52-c	53-b	54-a	55-b	56-d	57-c	58-b	59-d	60-a
61-d	62-b	63-b	64-a	65-b	66-b	67-b	68-a	69-c	70-b
71-d	72-b	73-a	74-b	75-c	76-b	77-c	78-a	79-c	80-d
81-b	82-b	83-d	84-c	85-b	86-a	87-b	88-b	89-a	90-b
91-b	92-d	93-c	94-b	95-b	96-b	97-b	98-a	99-c	100-a
101-a	102-b	103-c	104-c	105-d	106-c	107-b	108-b	109-c	110-c
111-b	112-b	113-b	114-c	115-c	116-b	117-a	118-a	119-b	120-b
121-c	122-d	123-d	124-d	125-b					



PHARMACY INDIA

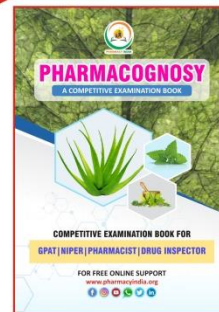
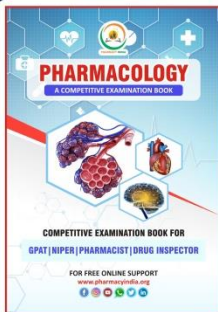
Face it | Fight it | Achieve it



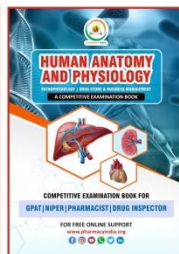
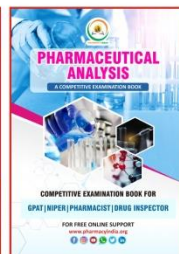
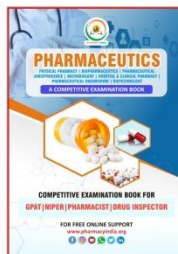
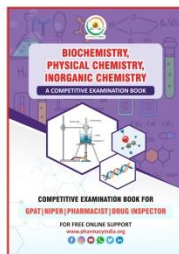
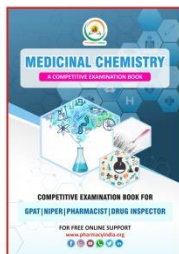
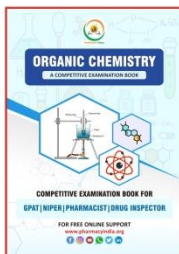
GPAT

STUDY MATERIAL PACKAGE

Price
₹3000



SET OF 8 BOOKS
WITH ONLINE TEST SERIES



ONLINE TEST SERIES

- 300+ SUBJECT WISE TEST
- 20 PREVIOUS YEAR PAPER WITH DETAILED EXPLANATION
- 20 FULL LENGTH TEST

Type PHARMACY INDIA in playstore to download the APP



8006781759, 8171313561



www.pharmacyindia.org



Visit: www.pharmacyindia.org



pharmacyindia24@gmail.com



Contact: 8006781759, 8171313561