



# PHARMACY INDIA

## PRACTICE WORK SHEET - 7

Name of Candidate:-.....

Date:-.....

Mobile No.:-.....

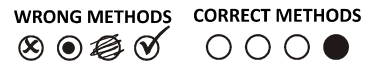
College Name:-.....

Candidate Sign

### INSTRUCTIONS:-

1. The Questions Booklet contains 125 questions. Examinee is required to answer all 125 questions in the OMR Answer-Sheet and not in the questions Booklet. All questions carry equal marks.
2. Examine the Questions Booklet and OMR Answer-Sheet very carefully before you proceed. Faulty Questions Booklet due to missing or duplicate paper/question or having any other discrepancy should be immediately replaced.
3. Features:- (i) Each Worksheet Contain 125 Question (ii) Subject Wise Distribution (iii) According To Syllabus (iv) Designed By Team Of Experts

Invigilator Sign



# PRACTICE WORK SHEET - 7

## INDIA'S 1<sup>ST</sup> OFFLINE TEST SERIES WITH DETAILED EXPLANATION

### FEATURES

- Each Worksheet Contain 125 Question
- Subject Wise Distribution
- According To Syllabus
- Designed By Team Of Experts



## PHARMACY INDIA

Street No - 4 , Dayalpuram , Khatauli, District - M.Nagar,  
Pin Code - 251201, U.P



[Pharmacyindia.co.in](http://Pharmacyindia.co.in)



[Pharmacyindia24@gmail.com](mailto:Pharmacyindia24@gmail.com)



8006781759 , 6395596959

### PHARMACEUTICS

1. **OROS is a technology developed for/as**
  - (a) Oral release rapid onset system
  - (b) Orally rapid disintegrating tablets
  - (c) Osmotic controlled oral drug delivery system
  - (d) Transdermal drug delivery system
2. **The Gibb's Phase rule**
  - (a) Holds only for systems with more than components
  - (b) Predicts that a maximum of three phase can exits in one components system
  - (c) Does not count phase compositions as intensive variables
  - (d) Does not count pressure and temperature as intensive variables
3. **The displacement value is defined as**
  - (a) Quantity of drug which displace one part of the base
  - (b) Quantity of base which displace one part of the drug
  - (c) Quantity of drug which displace one part of the acid
  - (d) Quantity of base which displace one part of the acid
4. **Clausius-Clapeyron equation is use to express the relationship between**
  - (a) Vapor pressure and absolute temperature
  - (b) Rate of vaporization at a definite temperature
  - (c) Rate of vaporization at a definite pressure
  - (d) Vapor pressure and boiling point
5. **IPEC deals with**
  - (a) Excipient
  - (b) USFDA
  - (c) GMP
  - (d) GLP
6. **The units of area under the curve (AUC) are**
  - (a)  $\text{cm}^2$
  - (b)  $\text{mg} / \text{cm}^2$
  - (c)  $\text{mg} / \text{ml} \times \text{min}$
  - (d)  $\text{cm}^2 / \text{hr}$
7. **Which of the following is a quantity?**
  - (a) True volume
  - (b) Bulk density
  - (c) True density
  - (d) Porosity
8. **Which of the following are NOT true**
  - [P] Pseudoplastic flow is exhibited by liquid dispersion of tragacanth
  - [Q] Dilatant material are also called Shear-thickning material
  - [R] Pseudoplastic flow is characterized by the yield value
  - [S] Dilatant flow is exhibited by flocculated particles
  - (a) [P], [Q]
  - (b) [R], [S]
  - (c) [P], [R]
  - (d) [Q], [R]
9. **Measuring zeta potential is useful in determining which property of a liquid formulation**
  - (a) Viscosity
  - (b) Stability
  - (c) Solubility
  - (d) Particle size
10. **What is the surface tension of water of at 25°C**
  - (a) 58 dyne/cm
  - (b) 68 dyne/cm
  - (c) 72 dyne/cm
  - (d) 82 dyne/cm
10. **Ans (c)**
  - The surface tension of water at 25°C is 70.4 dyne/cm.
11. **Passive diffusion follows which order of kinetics**
  - (a) Non selective and mixed order

- (c) It inhibits peripheral conversion of Thyroxine to Triiodothyronine
- (d) It does not inhibit peripheral conversion of Thyroxine to Triiodothyronine
- 55. Enzyme not involved in Biotransformation of drug by oxidation**
- (a) Cytochrome P-450 haemoprotein
- (b) Monooxygenase
- (c) Cytochrome P-450 reductase
- (d) Cytochrome oxidase
- 56. For drug with first order kinetics the time required to achieve steady state level can be predicted from**
- (a) Volume of distribution
- (b) Half life
- (c) Clearance
- (d) Loading dose
- 57. In a conscious patient of poisoning, use of an emetic is permissible in case the ingested poison is**
- (a) Ferrous sulfate
- (b) Sodium hydroxide
- (c) Kerosine
- (d) Morphine
- 58. All are antiemetic EXCEPT**
- (a) Domperidone
- (b) Ondansetron
- (c) Phenazocine
- (d) Cyclizine
- 59. The following is true of proton pump inhibitors except:**
- (a) They are the most effective drugs for Zollinger Ellison syndrome
- (b) Their prolonged use can cause atrophy of gastric mucosa
- (c) They inhibit growth of *H. pylori* in stomach
- (d) They have no effect on gastric motility
- 60. With respect to Ticlopidine, Clopidogrel is**
- (a) More likely to cause formation of antiplatelet antibodies
- (b) Less likely to cause neutropenia
- (c) More likely to cause severe bleeding
- (d) Greater antiplatelet effect
- 61. Aspirin prolongs bleeding by inhibiting the synthesis of which of the following**
- (a) Adenosine receptors
- (b) Cyclic AMP
- (c) Prostacyclin
- (d) Thromboxane A<sub>2</sub>
- 62. Which comprise the correct adverse effects of Benzthiazide**
- (a) Hyperkalemia, Hypermagnesemia, Hypocalcemia, Hypoglycemia
- (b) Hypokalemia, Hypomagnesemia, Hypocalcemia, Hypoglycemia
- (c) Hyperkalemia, Hypermagnesemia, Hypercalcemia, Hyperglycemia
- (d) Hypokalemia, Hypomagnesemia, Hypercalcemia, Hyperglycemia
- 63. Thiazides can cause:**
- (a) Hyperkalemic paralysis
- (b) Hypouricemia
- (c) Hypolipidemia
- (d) Impotence
- 64. Prolonged use of which of the following anticonvulsants can produce weight loss**
- (a) Gabapentin
- (b) Oxcarbazepine
- (c) Topiramate
- (d) Valproic acid

(d) NH<sub>2</sub> group at C-3

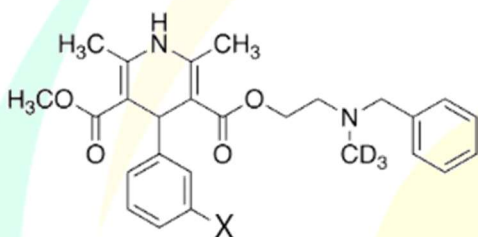
93. Ring present in Warfarin is

- (a) Naphthalene (b) Naphthol  
(c) Phenanthrene (d) Chromene

94. Menadione is generally

- (a) Naphthalene-1,1-dione  
(b) Naphthalene-1,2-dione  
(c) Naphthalene-1,3-dione  
(d) Naphthalene-1,4-dione

95. In the given structure of nicardipine X is substituted by



- (a) NH<sub>2</sub> (b) NO<sub>2</sub>  
(c) Cl (d) F

96. Guanethidine contains

- (a) Six membered ring with nitrogen  
(b) Eight membered ring with nitrogen  
(c) Six membered ring with oxygen  
(d) Eight membered ring with oxygen

97. 7-chloro-1-methy-5-phenyl-1,4-benzodiazepin-2-one is

- (a) Diazepam (b) Clorazepate  
(c) Oxazepam (d) Nordiazepam

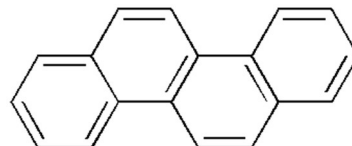
98. Diphenhydramine is generally

- (a) Amino alkyl ether  
(b) Amino alkyl ester  
(c) Amino alkyl hydroxide  
(d) Amino alkyl halide

99. Two or more than two aromatic rings that share a pair of carbon atom are said to be

- (a) Aliphatic chain  
(b) Aromatic ring  
(c) Polynuclear aromatic ring  
(d) All of the above

100. Name the following ring



- (a) Phenylene (b) Pyrene  
(c) Chrysene (d) Phenanthrene

101. Match the symbols in the List I with the terms used in the List II of conductance measurements and symbols

List I	List II
SYMBOLS	TERMS
1. G	[P] Specific conductance
2. A	[Q] Electrical conductance
3. κ	[R] Specific resistance
4. R	[S] Equivalent conductance

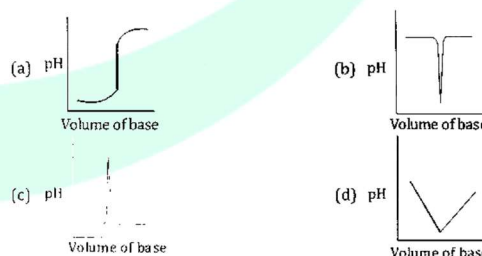
Choose the correct answer from the options given below

- (a) 1-[R], 2-[P], 3-[S], 4-[Q]  
(b) 1-[Q], 2-[S], 3-[P], 4-[R]  
(c) 1-[Q], 2-[S], 3-[R], 4-[P]  
(d) 1-[P], 2-[R], 3-[Q], 4-[S]

102. Benzene theoretically can have \_\_\_\_\_ number of possible fundamental absorption bands in the IR spectrum

- (a) 30 (b) 15  
(c) 6 (d) 0

103. The titration of a strong acid with a strong base is represented by plot



104. Potential at the equivalence point for a redox reaction

- (a)  $E = (bE_1^0 + aE_2^0) / (a + b)$   
(b)  $E = E^0 (0.0592/n) \times \log Q$   
(c)  $E = E^0 + (0.0592/n) \times \log (\text{Red/OX})$   
(d)  $E = E_1^0 + E_2^0 / 2$

105. Back-titration method is used for



## 22. Ans (a)

- Although oxybenzone or benzophenone-3 absorbs most efficiently in the UVB range, absorption extends well into the UVA II range.
- It is used primarily as a UVA absorber, but boosts SPF values in combination with absorbers. other UVB.
- Oxybenzone is supplied as a solid material and has poor solubility and a relatively low extinction coefficient.
- However, it also causes contact urticaria.

## 23. Ans (b)

## INGREDIENTS USED IN COSMETIC OF NAIL

INGREDIENTS	EXAMPLES
Solvents	High boiling: Butyl lactate, ethyl oxalate, isoamyl acetate etc.
	Medium boiling: Isopropyl acetate, Toluene, Amyl Format IPA, etc.
	Low boiling: Ether, Acetone, methyl acetate, ethyl acetate etc.
Diluents	Alcohol, benzene, xylene, toluene
Plasticizers	They impart flexible & gloss to the film & also help in adhesion to film to the nails e.g. - Dibutyl phthalate, resorcinol, castor oil etc.

## 24. Ans (a)

FACTORS	EFFECTS
<b>Density of dosage forms</b>	A density of $<1.0 \text{ gm/cm}^3$ is required to exhibit floating property.
<b>Shape and size of the dosage form</b>	Dosage forms having a diameter of more than 7.5 mm show a better gastric residence time compared with one having 9.9 mm. Ring-shaped and tetrahedron-shaped devices have a better gastric residence time as compared with other shapes.

## 25. Ans (c)

**Penetration enhancers:** These are the Substances added to pharmaceutical formulation in order to increase the membrane permeation rate or absorption rate of co-administered drug.

CATEGORIES	EXAMPLES	MECHANISM(S)
<b>Bile salts and their steroidal detergents</b>	Sodium glycolate, sodium taurocholate, saponins, etc.	Increase the fluidity of lipid bilayer membrane.
<b>Fatty acid</b>	Oleic acid, cod liver oil, capric acid and lauric acid.	Increase the fluidity of lipid bilayer membrane.
<b>Polymer and their derivatives</b>	Chitosan, trimethyl chitosan, chitosan -4- thiobutylamide	Increase the fluidity of lipid bilayer membrane, increase the retentions of

- Trimethoprim has 40% plasma protein bonding Sulfamethoxazole has 60% plasma protein binding.
- Mechanism of Action - Inhibits bacterial dihydrofotate reductase (DHFRase)
- Therapeutic use - Urinary tract infection, Respiratory tract infection Typhoid fever, Severe travelers diarrhoeas, Whooping cough.

## 48. Ans (d)

## SOURCES OF ANTIBIOTICS

ANTIBIOTIC	MICROORGANISM
Rifampicin	<i>Streptomyces mediterranei</i>
Nystatine	<i>Streptomycec noursei</i>
Candicidin	<i>Bacillus polymyxa</i>
AmphotericinB	<i>Streptomycec nodosus</i>
Bacitracin	<i>Bacillus subtilis</i>
Neomycin	<i>Streptomyces fradiae</i>
Tobramycin	<i>Streptomycec tenebrsus</i>
Gentamicin	<i>Micromonospora purpura</i>
Erythromycin	<i>Streptomycec erythraeus</i>
Mithromycin/Plicamycin	<i>Streptomycec argillaceus</i>
Mitomycin C	<i>Streptomycec verticillus</i>

## 49. Ans (a)

## CENTRAL ACTING MUSCLE RELAXANTS

<b>Mephenesin group</b>	Mephenesin, Carisoprodol, Chlorzoxazone, Chlormezanone, Methocarbamol
<b>Benzodiazepines</b>	Diazepam
<b>GABA derivatives</b>	Baclofen, Thiocolchicoside
<b>Central a<sub>2</sub> agonist</b>	Tizanidine

## 50. Ans (a)

## Duration of action of drugs are as follows

DRUGS	DURATION OF ACTION (MINUTES)
Suxamethonium or Succinylcholine	5-8 (Short acting drug)
Mivacurium	15-30
Pancuronium	60-120
Vecuronium	30-60

## 51. Ans (d)

- Immediately after release. Acetylcholine is hydrolyzed by the enzyme cholinesterase and choline is recycled. A specific (Acetylcholinesterase - AChE or true cholinesterase) and a nonspecific (Butyrylcholinesterase-BuchE or pseudocholinesterase) type of enzyme occurs in the body.
- Ester-linked Local Anaesthesia such as procaine are rapidly hydrolysed by plasma pseudocholinesterase and the remaining by esterases in the liver. Amide-linked LAS (lidocaine, etc.) are degraded only in the liver microsomes by dealkylation and hydrolysis.

**120. Ans (b)**

- All cholesterol arriving in the large intestine can be metabolized by the colonic bacteria.
- Cholesterol is mainly converted into coprostanol, a non-absorbable sterol that is excreted in the feces.

**121. Ans (a)**

PATHWAY	DESCRIPTION	LOCATION
Citric Acid Cycle (Krebs Cycle)	Acetyl COA → CO <sub>2</sub> and H <sub>2</sub> O	Mitochondria

**122. Ans (d)**

TEST	REAGENT	AMINO ACID
Sanger Test	1-Fluoro 2,4 dinitro benzene	Detection of free amino acid in of insulin

**123. Ans (b)**

TYPE	EXAMPLES
Ketogenic Amino Acid	Leucine, Lysine
Glucogenic (Glycogenic) Amino Acid	Arginine, Glutamate, Glutamine, Histidine, Proline, Valine, Methionine, Aspartate, Alanine, Serine, Cysteine, Hydroxyproline, Threonine and Glycine

**124. Ans (b)**

- Fimbriae enable the bacterial cell to stick to the surface of host cells. They also help in the formation of pellicles or biofilms.
- They do not play a role in bacterial motility. It also join bacterial cells for transferring bacterial DNA/ gene.

**125. Ans (a)****Pour plate technique**

- It is based on dilution of microbes and pouring the tested material with gelatin.
- After cooling the gelatin isolated colonies of microorganisms are formed and they easily can be transferred on a fresh nutrient medium by a loop for obtaining a microbial pure culture.
- It is the quantitative culture method used to estimate viable bacterial count.

PHARMACY INDIA

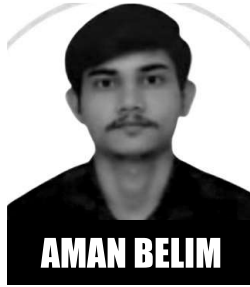
# Heartiest congratulations



## FOR THE REMARKABLE RESULT IN GPAT 2023



**AIR-07**



**470+**  
Selection



**AIR-47**

**AIR-99**



**AIR-143**



**AIR-150**



**AIR-211**



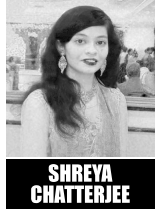
**AIR-250**



**AIR-257**



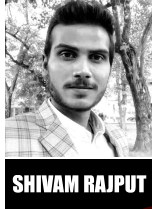
**AIR-297**



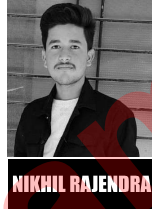
**AIR-322**



**AIR-354**



**AIR-487**



**AIR-505**



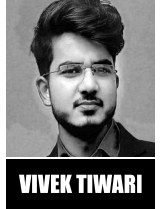
**AIR-595**



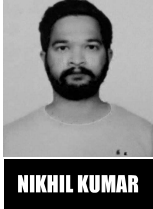
**AIR-636**



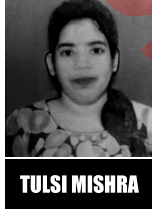
**AIR-677**



**AIR-697**



**AIR-787**



**AIR-869**



**AIR-909**



**AIR-971**



**AIR-1052**



**AIR-1110**



## PHARMACY INDIA

Street No - 4 , Dayalpuram , Khatauli, District - M.Nagar,  
Pin Code - 251201, U.P

 [Pharmacyindia.co.in](http://Pharmacyindia.co.in)  [Pharmacyindia24@gmail.com](mailto:Pharmacyindia24@gmail.com)

 8006781759 , 6395596959