

MEDICINAL CHEMISTRY-II

Unit-3 | Part-2



ANTI-HYPERLIPIDEMIC AGENTS

MORE INFORMATION:



CALL US NOW

6395596959, 8006781759



B. PHARMA 5TH SEM | MEDICINAL CHEMISTRY-II

B. PHARMA 5TH SEM ONE SHOT NOTES

UNIT-3 | PART-1

ANTI-HYPERLIPIDEMIC AGENTS

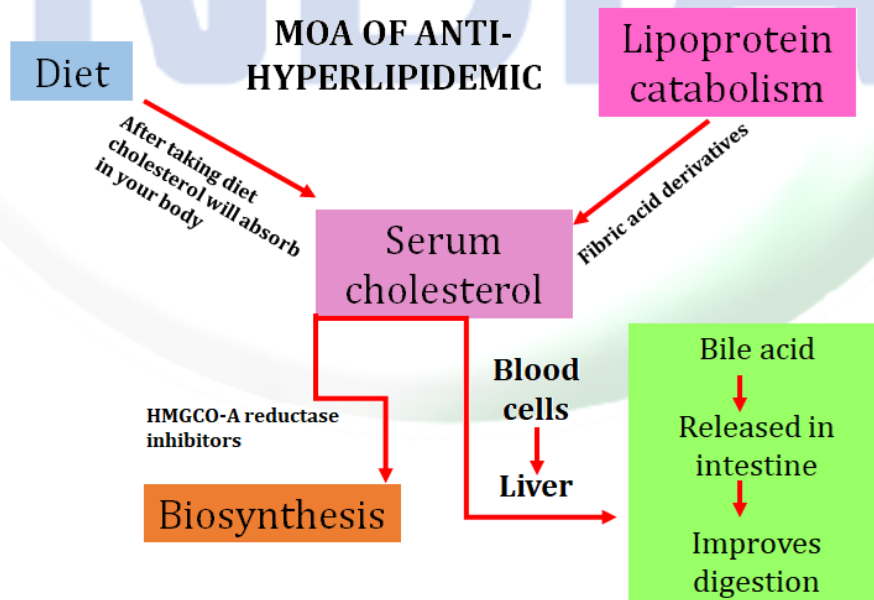
Introduction

- Atherosclerosis is a condition characterized by damage to the arteries.
- During this condition, the concentration of lipids, specifically cholesterol, in plasma is increased which may put the patient at an increased risk for ischemic heart diseases, myocardial infarction, and cerebral vascular accidents.
- Lipids lack water solubility and are transported in plasma in the form of lipoproteins. Hyperlipidaemia, also referred to as hyperlipoproteinemia, is a condition characterised by an increase in the lipid concentration in plasma.
- Hypocholesterolemic or anti-hyperlipidemic or lipid lowering agents are the pharmacological agents decreasing the concentration of lipids in plasma.

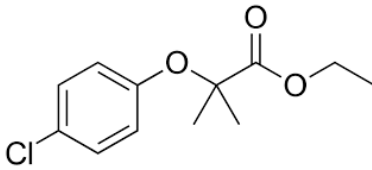
Classification

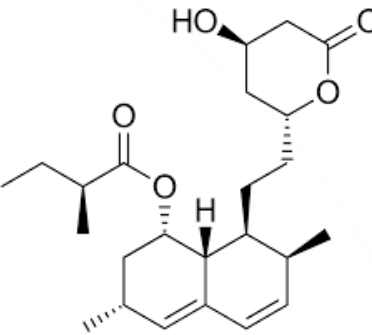
- 1) **HMG-CoA Reductase Inhibitors (Statins):** Lovastatin, Simvastatin, Pravastatin, and Atorvastatin.
- 2) **Bile Acid Sequestrants (Resins):** Cholestyramine and Colestipol.
- 3) **Fibric Acid Derivatives (Fibrates):** Clofibrate, Gemfibrozil, Bezafibrate, and Fenofibrate.
- 4) **Triglyceride Synthesis and Lipolysis Inhibitors:** Nicotinic acid.
- 5) **Others:** Probucol and Omega-3 fatty acids.

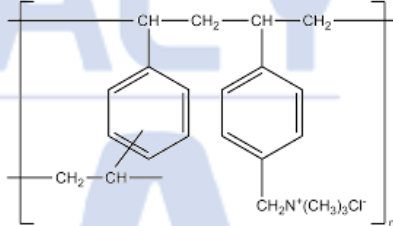
Mechanism of Action

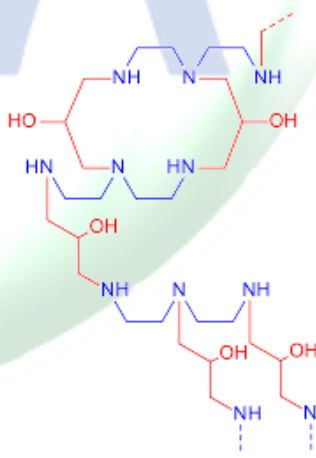


B. PHARMA 5TH SEM | MEDICINAL CHEMISTRY-II

Drug	Uses	Structure
Clofibrate	<ul style="list-style-type: none"> helps in controlling high cholesterol and high triglyceride levels 	

Drug	Uses	Structure
Lovastatin	<ul style="list-style-type: none"> reducing the risk of myocardial infarction, unstable angina, and coronary revascularisation methods in patients having risk related to increased total cholesterol, increased LDL cholesterol, and below 	

Drug	Uses	Structure
Cholestyramine	<ul style="list-style-type: none"> treating pruritus related to partial biliary obstruction. 	 <p style="text-align: center;">typical structure of main polymeric groups</p>

Drug	Uses	Structure
Colestipol	<ul style="list-style-type: none"> used as an adjunct to diet for decreasing the elevated serum total and LDL-C in patients having primary hypercholesterolemia 	

PHARMACY
INDIA



WHATSAPP



TYPE "PINDIA"
& SEND US ON

8006781759 FOR PHARMA UPDATES

JOIN US

IF YOU ARE
B.PHARMA
STUDENT



Download
PHARMACY INDIA
App from play store



TELEGRAM



SCAN QR CODE
TO JOIN BIGGEST

PHARMA TELEGRAM GROUP
(10000+ STUDENTS)



Instagram



FOLLOW
PHARMAINDIA24

GET RECENT PHARMA JOBS UPDATES



WEBSITE



pharmacyindia.co.in

GET LATEST PHARMA
JOBS UPDATES

Download **PHARMACY INDIA** Mobile
App From Play Store

GET B. PHARMA NOTES