



PHARMACIST PUNCH

USEFUL FOR

RRB, AIIMS, DSSSB, ESIC, RAILWAY, CGHS, ISRO, NHM, SECL, NTPC, NCL, SEPOY,
STATE & CENTRAL GOVT. PHARMACIST EXAMINATION

Objective Book For

PHARMACIST COMPETITIVE EXAM PREPARATION

9000+
TOTAL
TOPICWISE
MCQS

**FULLY
COLOURED
BOOK**

135+
PREVIOUS YEAR
PAPER COVERED
(TOPIC WISE)

4000+
FREE
ONLINE MCQS
(TEST SERIES)



FEATURES

Based On Latest Syllabus

Designed by Pharmacy India Experts

Subject wise & Topic wise MCQs

Fully Coloured Book

Verified Answers

9000+ MCQs



PHARMACIST PUNCH

PHARMACIST COMPETITIVE EXAM PREPARATION

As Per The Latest Exam Pattern

USEFUL FOR



STATE & CENTRAL GOVT. PHARMACIST EXAMINATIONS



PUBLISHED BY
PHARMACY INDIA PUBLICATION



PHARMACY INDIA PUBLICATION

ISBN: 978-81-986403-5-2

1st Edition- 20th October 2025

Copyright © 2025 Pharmacy India Publication

All Rights reserved. No part of this book may be reproduced, stored in any electronic or mechanical form, including photocopy, recording or otherwise, without the prior written permission of the author and the publisher.

PUBLISHED BY
DHALENDRA KOTHALE, UTSAV VERMA FOR
PHARMACY INDIA PUBLICATION
STREET-4, DAYALPURAM, KHATAULI
MUZAFFARNAGAR, (U.P) 251201

Price:- Rs. 999/-

HEAD OFFICE:

PHARMACY INDIA

STREET-4, DAYALPURAM, KHATAULI MUZAFFARNAGAR, 251201

☎ 8171313561, 8006781759 ☒ pharmacyindia24@gmail.com

🌐 pharmacyindia.co.in

PHARMACIST SYLLABUS

Pharmaceutics

1. Introduction to Pharmacopoeias
2. Pharmaceutical Packaging
3. Pharmaceutical Aids & Preservatives
4. Metrology
5. Packaging of pharmaceuticals
6. Unit Operations
7. Sterilization
8. Study of immunological products like sera, vaccines, toxoids & their preparations.
9. Dispensing Pharmacy
10. Dispensed Medications
 - I. Solid Dosage Forms
 - II. Liquid oral Dosage
 - III. Semi-Solid Dosage Forms
11. Dental and cosmetic preparations
12. Sterile Dosage forms
13. Basic structure, layout, sections, and activities of pharmaceutical manufacturing plants
14. Quality Control and Quality Assurance
Novel Drug Delivery System
10. Expectorants and Emetics
11. Antidotes
12. Inorganic official compounds of Iron, Iodine and Calcium, Ferrous Sulphate and Calcium Gluconate.
13. Radiopharmaceuticals and contrast media
14. Quality control of Drugs and pharmaceuticals
15. Identification tests for cations and anions as per Indian Pharmacopoeia.
16. Introduction to the nomenclature of organic chemical systems with particular reference to hetero-cyclic system containing up to 3 rings.
17. Antiseptics and Disinfectants
18. Sulphonamides
19. Antileprotic Drugs
20. Anti-tubercular Drugs
21. Antimoebic and Anthelmintic Drugs
22. Antibiotics, Antifungal agent
23. Antimalarial Drugs
24. Tranquilizers
25. Hypnotics
26. General Anaesthetic
27. Antidepressant Drugs
28. Analeptics
29. Adrenergic drugs
30. Adrenergic antagonist
31. Cholinergic Drugs
32. Cholinergic Antagonists
33. Diuretic Drugs
34. Cardiovascular Drugs
35. Hypoglycaemic Agents
36. Coagulants and Anti coagulants
37. Local Anaesthetics
38. Histamine and Anti-histaminic Agents
39. Non-steroidal anti-inflammatory agents
40. Thyroxine and Antithyroid
41. Diagnostic Agents
42. Anticonvulsants

Pharmaceutical Chemistry

1. Sources and types of errors, Impurities in Pharmaceuticals
2. Volumetric and Gravimetric Analysis
3. Acids, bases and buffers
4. Antioxidants
5. Gastrointestinal agents
6. Topical Agents
7. Dental Products
8. Inhalants
9. Respiratory stimulants

PHARMACIST SYLLABUS

1. Concept of health
2. National Health Policy, National Health Mission
3. Ongoing National Health programs in India
4. Nutrition and health
5. Demography and family planning
6. Mother and child health, importance of breastfeeding
7. Overview of Vaccines, types of immunity and immunization
8. Psychosocial Pharmacy
9. First aid
10. Environment and health
11. Fundamental principles of microbiology
12. Communicable diseases
13. Non-communicable diseases

Pharmacology & Toxicology

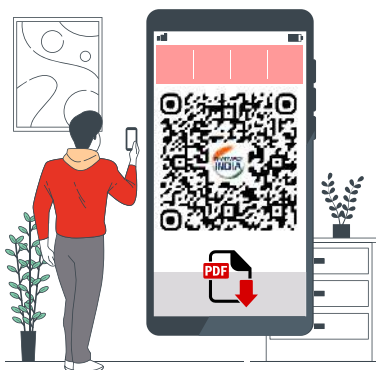
1. General Pharmacology
2. Drugs Acting on the Autonomic Nervous System
3. Autacoids and Related Drugs
4. Drugs acting on Respiratory System
5. Hormones and Related Drugs
6. Drugs Acting on the Peripheral Nervous System
7. Drugs Acting on the Central Nervous System
8. Drugs acting on Cardiovascular System
9. Drugs acting on Kidney
10. Drugs affecting blood and blood formation
11. Gastrointestinal Drugs
12. Antimicrobial Drugs
13. Chemotherapy of cancer.

Pharmaceutical Jurisprudence

1. Origin and nature of pharmaceutical legislation in India.
2. Pharmacy Act, 1948
3. The Drugs and Cosmetics Act
4. Narcotic Drugs and psychotropic substances Act, 1985
5. The Drugs and Magic Remedies
6. Prevention of Cruelty to Animals Act-1960
7. Poisons Act-1919
8. FSSAI (Food Safety and Standards Authority of India) Act and Rules
9. National Pharmaceutical Pricing Authority
10. Code of Pharmaceutical Ethics
11. Medical Termination of Pregnancy Act and Rules
12. Central Drugs Standards Control Organization (CDSCO)
13. Indian Pharmacopoeia Commission (IPC)
14. Good Regulatory practices
15. Introduction to BCS system of classification.
16. Basic concepts of Clinical Trials, ANDA, NDA
17. New Drug development, New Drugs and Clinical Trials Rules, 2019.
18. Brand v/s Generic, Trade name concept
19. Introduction to Patent Law and Intellectual Property Rights
20. Emergency Use Authorization
21. Blood bank – basic requirements and functions
22. Clinical Establishment Act and Rules
23. Biomedical Waste Management Rules 2016
24. Bioethics
25. Introduction to the Consumer Protection Act
26. Introduction to the Disaster Management Act
27. Medical Devices

INDEX

S.NO	SUBJECTS	PAGE NO.
1.	Pharmaceutics	1-6
2.	Pharmaceutical Engineering	7-12
3.	Pharmaceutical Dispensing	13-21
4.	Cosmetics Technology	22-33
5.	Physical Pharmacy	34-38
6.	Biopharmaceutics and Pharmacokinetics	39-43
7.	Pharmaceutical Biotechnology	44-48
8.	Pharmaceutical Jurisprudence	49-54
9.	Pharmacology	55-58
10.	Pharmacognosy	59-64
11.	Pharmaceutical Chemistry	65-69
12.	Biochemistry & Clinical Pathology	70-73
13.	Health Education & Community Pharmacy/ Social Pharmacy	74-79
14.	Community Pharmacy & Management/ DSBM	80-87
15.	Hospital and Clinical Pharmacy	88-93
16.	Human Anatomy & Physiology	94-98
17.	General Math's	99-109
18.	General Intelligence & Reasoning Ability	110-116
19.	General English	117-120
20.	Computer Knowledge	121-125
21.	General Hindi	126-130
22.	General Knowledge/ General Awareness, General Science, Current Affairs	131-139



SCAN TO DOWNLOAD
FULL PHARMACIST SYLLABUS PDF

Download
PHARMACY INDIA
Mobile App on



Introduction To Pharmacopoeias

- In which year was the sixth edition of the Indian Pharmacopoeia published? (Rajasthan NHM 2025)**
(a) 2007 (b) 2009 (c) 2010 (d) 2012
- The mercury-in-glass thermometers mentioned in the Pharmacopoeia of India have their column above the liquid filled with (Rajasthan NHM 2025)**
(a) Oxygen (b) Nitrogen
(c) Carbon dioxide (d) Helium
- In which city is the Indian Pharmacopoeia Commission (IPC) located, responsible for publishing the Indian Pharmacopoeia ? (Rajasthan NHM 2025)**
(a) New Delhi (b) Mumbai
(c) Ghaziabad (d) Hyderabad
- In 1885, which of the following Pharmacopoeias was made official in India (MPSC 2023)**
(a) Indian Pharmacopoeia (b) European Pharmacopoeia
(c) United States (d) British Pharmacopoeia
- The number of newly added monographs in Indian Pharmacopoeia 2022 is (MPSC 2023)**
(a) 92 (b) 74 (c) 63 (d) 103
- The latest Martindale edition is the (MPSC 2023)**
(a) 29th (b) 40th (c) 42nd (d) 33rd
- The standard for Insulin was introduced in the USP in the year (MPSC 2023)**
(a) 1937 (b) 1938 (c) 1941 (d) 1949
- Which is an Extra Pharmacopoeia (MPSC 2023)**
(a) BP (b) BPC (c) IP (d) Martindale
- The supplement for Indian Pharmacopoeia in 2000 was introduced to include which of the following (MPSC 2023)**
(a) Liposomal products (b) Veterinary products
(c) Herbal drugs (d) Vaccines
- Indian pharmacopoeia of India has adopted type of classification system (MPESB 2023 P2)**
(a) Morphological (b) Pharmacological
(c) Chemical (d) Alphabetical
- Which of the following is NOT an unofficial pharmacopoeia (MPESB 2023 P2)**
(a) British Pharmaceutical Codex
(b) Remington's Pharmaceutical Sciences
(c) Merck Index
(d) The United States Dispensary
- The first edition of British Pharmacopoeia was published in which year (HPSSC 2020,2022, MPSC 2023)**
(a) 1854 (b) 1857 (c) 1864 (d) 1867
- After Independence, in which year Indian Pharmacopoeia was made official in India (MC-ND Pharmacist 2022)**
(a) 1949 (b) 1980 (c) 1948 (d) 1947
- As per Indian Pharmacopoeia, a tablet should not be (MC-ND Pharmacist 2022)**
(a) Round shaped (b) Flat spherical
(c) Bi-convex spherical (d) Star shape
- The third edition of Indian Pharmacopoeia (IP) was published in (MPESB 2022)**
(a) 1985 (b) 1990 (c) 1960 (d) 1975
- Supplement to IP 1955 was published in the year (Hamirpur Pharmacist 2021)**
(a) 1958 (b) 1959 (c) 1960 (d) 1961
- IP 2015 incorporates (HPSSC 2020, Hamirpur Pharmacist 2021)**
(a) 1550 monographs (b) 2050 monographs
(c) 2550 monographs (d) 3050 monographs
- Indian Pharmacopoeia uses (HP 2020, Hamirpur Pharmacist 2021)**
(a) Metric system (b) Avoirdupois system
(c) Apothecaries system (d) All of these
- Which of the feeling test is NOT official as per Indian Pharmacopoeia (HPSSC 2020, Hamirpur Pharmacist 2021)**
(a) Uniformity of content (b) Uniformity of weight
(c) Uniformity of colour (d) Friability
- The second edition of the Indian Pharmacopoeia was published in (HPSSB 2020)**
(a) 1947 (b) 1955 (c) 1966 (d) 1975
- In which year the government of India constituted a permanent Indian Pharmacopoeia committee (HPSSB 2020)**
(a) 1955 (b) 1948 (c) 1960 (d) 1945
- The first edition of Indian Pharmacopoeia was published in (Raj. Pharmacist 2012, BCCL -2013, 2015, NCL 2016, ESIC 2016, KPSC 2017, BPUHSMC 2018, MP 2020PI)**
(a) 1955 (b) 1966 (c) 1947 (d) 1945

60. Identify the INCORRECT statement in context to Mannitol

- (a) Has negative heat of solution
- (b) Used in chewable tablet
- (c) Has excellent flow property
- (d) It has low solubility

Granulation & Tablet Manufacturing

61. Which of the following techniques is commonly used to improve the flow properties of powders? (BTSC 2025)

- (a) Drying
- (b) Granulation
- (c) Crystallization
- (d) Filtration

62. Method of incorporation of disintegrants in tablets is: (KPSC 2025)

- (a) Before granulation
- (b) After granulation
- (c) In parts before and after granulation
- (d) With coating solution

63. Which of the following tablet machine is used for large scale production of tablets (MPESB 2023 P2)

- (a) Single punch machine
- (b) Hand operated punch machine
- (c) Rotary tablet machine
- (d) Multi punch machine

64. Which of the following is not a stage of Tableting? (AIIMS Patna 2023)

- (a) Filtration
- (b) Dry Blending
- (c) Coating
- (d) Granulation

65. Weight variations in tablet processing is caused by all of the following EXCEPT (HPSSC 2020, Hamirpur Pharmacist 2021)

- (a) Non uniform granule size distribution
- (b) Poor flow of granules
- (c) Higher speed of turret
- (d) Presence of excessive fines

66. Which of the following is NOT considered as an advantage of granulation in tablet manufacturing (MPSC 2023)

- (a) Enhancement of flow properties
- (b) Decrease in dust formation
- (c) Enhancement of compaction
- (d) Enhancement of dissolution

67. The component of tablet machine which controls the shape and size of the tablet is (ESIC 2016, BFUHSMC 2018, VMC 2021)

- (a) Hopper
- (b) Punches
- (c) Cam track
- (d) Dies

68. The first stage of wetting on addition of granulating agent to the powders is characterized by which one of the following (CGHS Bangalore 2019)

- (a) Capillary state
- (b) Pendular state
- (c) Funicular state
- (d) Droplet state

69. Aspirin and vitamin tablets are often prepared by:

- (a) Wet granulation
- (b) Fusion method
- (c) Compression granulation
- (d) Direct compression

70. Which among the following methods is not used during tablet preparation (ESIC 2019)

- (a) Granulation
- (b) Sieving
- (c) Compressing
- (d) Hand filling

Tablet Coating

71. The process of tablet coating is used to: (DSSSB 6th May 2025 S1)

- (a) enhance tablet disintegration
- (b) increase the tablet's weight
- (c) improve drug solubility
- (d) mask the unpleasant taste

72. In the context of pharmaceutical dosage forms, what does the term "enteric coating" refer to (OSSC 2024)

- (a) A coating that enhances the taste of a tablet
- (b) A coating that delays drug release until it reaches the small intestine
- (c) A coating that protects the drug from light
- (d) A coating that improves drug absorption in the stomach

73. The property of an ideal enteric coating material, which is used for tablet coating is (KPSC 2024)

- (a) Resistance to gastric fluid
- (b) Resistance to intestinal fluid
- (c) Liable to cracking and chipping
- (d) Waterproof coating is required prior to coating

74. Cellulose acetate phthalate is a tablet coating material used for (KPSC 2024)

- (a) Sugar coating
- (b) Syrup coating
- (c) Enteric coating
- (d) Film Coating

75. Why sub coating is provided on the tablets (Raj. Pharmacist 2012, RRB 2015, HPSSC 2016, KPSC 2017, HPSSC 2022, MPESB 2023 P2)

- (a) To avoid deterioration to microbial attack
- (b) To prevent the solubility in acidic media
- (c) To avoid stickiness
- (d) To increase the bulk size of the tablets

76. Which of the following is NOT added to chewing tablet (ISRO 2018)

- (a) Glidant
- (b) Disintegrant
- (c) Lubricant
- (d) Antiadhesive

- (a) By decreasing the solid-liquid interfacial tension
 (b) By increasing the solid-liquid interfacial tension
 (c) By decreasing the solid-liquid interfacial tension and by increasing the solid-liquid interfacial tension
 (d) None of these
64. "Zephiran" is a _____ surfactant (ESIC 2014)
 (a) Anionic (b) Cationic
 (c) Non-ionic (d) Ampholytic
65. Which of the following is NOT used as an emulsifying agent (Raj. Pharmacist 2014)
 (a) Surfactant (b) Hydrophilic colloids
 (c) Electrolytes (d) Finely divided solids
66. To identify the emulsion type, which of the following tests are conducted (Raj. Pharmacist 2014)
 (a) Dilution test (b) Dye test
 (c) Conductivity test (d) All of these
67. Phase inversion in emulsion involves (Raj. Pharmacist 2011, 2014)
 (a) Change of emulsion type
 (b) Complete separation of two phases
 (c) Formation of aggregates
 (d) Upward movements of floccules
68. Which one is NOT related with the physical instability of an emulsion (ESIC 2014)
 (a) Phase inversion (b) Creaming or sedimentation
 (c) Coalescence (d) Oxidation of the components
69. To increase the viscosity of liquid, which of the following agents are used (Raj. Pharmacist 2011, 2014)
 (a) PVP
 (b) Benzalkonium chloride
 (c) Sodium Carboxy Methyl Cellulose
 (d) All of these
70. Shelf life of a pharmaceutical product is computed by (MH Pharmacist 2012)
 (a) Fick's laws (b) Arrhenius equation
 (c) Higuchi equation (d) Noyes Whitney equation
2. Creams are semisolid preparations that are generally _____. (BTSC 2025)
 (a) emulsions (b) solutions
 (c) suspensions (d) elixirs
3. Which of the following options is not an evaluation test for a semisolid dosage form? (BTSC 2025)
 (a) Consistency test (b) Penetration test
 (c) Weight variation test (d) Rate release test
4. Select the most appropriate statement regarding the difference between ointments and pastes. (BTSC 2025)
 (a) Ointments generally contain less concentration of solids than pastes.
 (b) Ointments are generally less greasy in nature than pastes.
 (c) Ointments are generally stiffer in nature than pastes.
 (d) Ointments are generally more viscous than pastes.
5. Which of the following dyes is mainly used to perform patch test in cosmetics? (DSSSB 6th May 2025 S1)
 (a) Metaphenylenediamine (b) Ethylenediamine
 (c) Paraphenylenediamine (d) Orthophenylenediamine
6. Paste (oil paste) is an ointment containing _____ pulverized constituents. (HSSC 2025)
 (a) Less than 2% (b) 2 – 5%
 (c) 6 – 8% (d) More than 10%
7. In the context of drug administration, what does the term "topical" refer to? (OSSC 2024)
 (a) Orally ingested medications
 (b) Medications applied to the skin or mucous membranes
 (c) Injectable medications
 (d) Inhaled medications
8. The base which is not suitable for the preparation of eye ointment base (KPSC 2024)
 (a) Yellow soft paraffin (b) White soft paraffin
 (c) Liquid paraffin (d) Wool fat
9. _____ are the substances that soften and moisturize the skin and decrease itching and flaking. (AIIMS Patna 2023)
 (a) Demulcents (b) Emollients
 (c) Caustics (d) Glycosides
10. Methyl paraben or propyl paraben may be used in the preparation of ointment as (MPSC 2023)
 (a) A preservative
 (b) An emulsifier
 (c) A humectant
 (d) A chelating agent
11. With respect to paste formulation, which among the following statement is true (MPESB 2022)
 (a) It contains low drug loadings
 (b) It may not be applied to exuding wounds
 (c) It is used as sunblock formulations
 (d) Pastes are cosmetically acceptable

Semisolids

1. What is a key difference in application between ointments and pastes? (BTSC 2025)
 (a) Pastes can be applied to the skin and ointments cannot be applied.
 (b) Ointments are applied only to the skin, while pastes can be applied to both skin and mucous membrane.
 (c) Ointments can be applied to the skin and pastes cannot be applied.
 (d) Pastes are applied only to the skin, while ointments can be applied to both skin and mucous membrane.

Prescription

- Labels are specific instructions or warnings placed on filled prescriptions to give additional information to the patient. (DSSSB 2025 S2)
(a) Cautionary (b) Rx
(c) Warning (d) Auxiliary
- Which abbreviation is commonly used to indicate that a medication should be taken before meals? (DSSSB 2025 S2)
(a) p.r.n. (b) p.c. (c) q.d. (d) a.c
- The Prescription Drug Amendments Act was formulated in: (DSSSB 2025 S3)
(a) 1993 (b) 1994 (c) 1995 (d) 1992
- The Latin word 'sumendum' corresponds to _____. (DSSSB 2025 S3)
(a) Lozenge (b) Immediately
(c) Let it be taken (d) Three times a day
- A prescription can be legal only if it is written and signed by a: (BTSC 2025)
(a) Pharmacist (b) Nurse
(c) Medical practitioner (d) Physiotherapist
- What does 'Sig' or signa indicate on a prescription? (BTSC 2025)
(a) Physician's license number
(b) The pharmacist's directions
(c) Directions for taking the medication
(d) The patient's signature
- How should a pharmacist ensure accuracy while planning a prescription? (BTSC 2025)
(a) By relying on prior experience rather than exact measurements
(b) By delegating the task to a non-pharmacist assistant
(c) By using proper balances and measures for accurate weighing and measurement
(d) By estimating the ingredients visually
- The part of the prescription called inscription contains: (Raj. NHM 2025)
(a) Name and qty. of ingredients
(b) Name and Age of patient
(c) Signature of Doctor
(d) Patient information
- The part of prescription mentioning about the ingredients and quantity is termed as (MPPGCL 2024)
(a) Description (b) Inscription
(c) Superscription (d) Subscription
- The Latin term "Omni mane" means: (MHSRB 2024)
(a) Early in the morning (b) Every morning
(c) Every day (d) Every night
- The part of prescription containing directions to the pharmacist for preparing the prescriptions and for dispensing them, is known as (MPSC 2023, AIIMS Raipur 2023, MRBTN 2023, OSSSC 2024, ISRO 2024)
(a) Superscription (b) Refilling
(c) Subscription (d) Signatura
- In which of the following phases of handling the prescription, proper drug is dispensed in a suitable form? (AIIMS Raipur 2023)
(a) Compounding
(b) Collecting and weighing the materials
(c) Receiving
(d) Reading and Checking
- Which part of prescription is represented by the symbol Rx? (AIIMS Raipur 2023)
(a) Inscription (b) Subscription
(c) Superscription (d) Signature
- The Latin term pulvis conspersus refers to (MRBTN 2023)
(a) Poultice (b) Powder
(c) Ointment (d) Dusting powder
- One common cause of prescription errors is the use of ambiguous abbreviations. This can lead to errors primarily in: (SSB 2023)
(a) Patient counseling
(b) Insurance billing
(c) Drug pricing
(d) Drug dispensing
- In prescription handling, the term "DUR" refers to Drug Utilization Review, which is important for: (SSB 2023)
(a) Determining the cost-effectiveness of a prescription.
(b) Identifying potential drug interactions, contraindications, or other clinical issues.
(c) Assessing the patient's eligibility for medication assistance programs.
(d) Calculating the pharmacy's inventory requirements.

41. Latin term S.O.S. means (KPSC 2017)
 (a) Take alternate days (b) Take immediately
 (c) Take as directed (d) Take when necessary
42. In a prescription D5W means (SIHFW 2016)
 (a) Distilled water 5 ml (b) Daily 5 times
 (c) 5 drops of water (d) Dextrose 5% solution
43. What is ter in die-in prescription (Raj. Pharmacist 2016 P1)
 (a) Once in three days (b) Three tablets at a time
 (c) Three times a day (d) Two or three times a day
44. Signatura is the direction given to (ESIC 2016)
 (a) Prescriber (b) Pharmacist
 (c) Patient (d) Manufacturer
45. In a prescription order inscription denotes (Raj. Pharmacist 2016 P1)
 (a) Main body of the prescription containing formula
 (b) Guidelines to the pharmacist
 (c) Address of patient
 (d) Address of prescriber
46. 'Q.S. in prescription means (SIFHW 2016, Raj. Pharmacist 2016 P2)
 (a) Every hour (b) Sufficient quantity
 (c) Every time (d) Every day
47. The term 'BD' in prescription means (SIFHW 2016, Raj. Pharmacist 2016 P2)
 (a) Twice daily (b) Thrice daily
 (c) Once a day (d) Four times
48. In a prescription "q.i.d" means (SIFHW 2016, Raj. Pharmacist 2016 P2)
 (a) One fourth (b) One quart
 (c) Once in four days (d) Four times a day
49. What is the of 'ou' in a prescription (SIFHW 2016, Raj. Pharmacist 2016 P2)
 (a) One unit (b) Once a day
 (c) Orally (d) Both eyes
50. In a prescription 'post cibos' means (Raj. Pharmacist 2016 P1)
 (a) Before food (b) After food
 (c) As directed (d) Occasionally
51. In prescription the Latin term "fiat" means (Raj. Pharmacist 2016 P1)
 (a) Let it be mixed (b) Let it be made
 (c) At once (d) Single tablet at time
52. What is a Tabella in prescription (Raj. Pharmacist 2016 P1)
 (a) Table spoon (b) Tablet
 (c) Table salt (d) Transdermal patches
53. In a prescription "STAT" means (Raj. Pharmacist 2016 P1)
 (a) Straight (b) One half
 (c) At once (d) Single tablet at time
54. Meaning of the Latin term 'sumendus' is (ESIC 2016)
 (a) To be taken (b) You take
 (c) To be used (d) To be applied
55. Method for mixing potent drug powder with large volume of diluent is (KPSC 2015)
 (a) Tumbling (b) Geometric dilution
 (c) Sifting (d) Levigation
56. The meaning of Latin term Mane (HPSSC 2018, KPSC 2015 P2)
 (a) Every Night (b) Every Morning
 (c) In the Morning (d) During the Night
57. The latin term 'Oris' denotes (NCA 2015, KPSC 2015)
 (a) To mouth (b) Ever hour
 (c) When necessary (d) At bed time
58. dieb.alt. means (KPSC 2015)
 (a) Four times a day (b) Every other day
 (c) As needed (d) After meals
59. "Mode dicto" means (NTPC 2013)
 (a) As directed (b) When necessary
 (c) To be supplied none (d) None of these
60. Cochleare Magnum bis in die sumendo means (Raj. Pharmacist 2012 P2)
 (a) A table spoonful to be taken twice a day
 (b) A tea spoonful to be taken twice a day
 (c) A dessert spoonful to be taken twice a day
 (d) A measure to be taken twice a day
61. Meaning of lente' is (AIIMS 2012)
 (a) Immediately (b) Frequently
 (c) Slowly (d) When necessary
62. The latin term "Guttae" means (Raj. Pharmacist 2012 P1)
 (a) Injections (b) Tablets (c) Drops (d) Cachets
63. The 1st part of the prescription will be having all the below-written information EXCEPT
 (a) How to take the medicines (b) Rx
 (c) Name of medicine (d) Type of administration
64. In a prescription what is the abbreviation for Daily
 (a) qid (b) qod (c) quot. (d) q
65. In a prescription 'Digitus' means
 (a) Right ear (b) Left eye (c) Hand (d) Finger

Posology

1. In posology, therapeutic index refers to: (DSSSB 2025 S3)
 (a) The ratio of the toxic dose to the therapeutic dose of a drug
 (b) The concentration of a drug required to produce a response
 (c) The time taken for a drug to be absorbed in the body
 (d) The rate at which a drug is metabolized

States of Matter

- The relationship between vapour pressure and absolute temperature of liquids is expressed by: (DSSSB 2025 S2)**
 - The Clausius-Clapeyron equation
 - Stokes' law
 - Raoult's law
 - The Vander Wall equation
- 1 atm is equal to: (DSSSB 2025 S2)**
 - 1.01325×10^2 Pa
 - 1.01325×10^2 Pa
 - 25×10^5 Pa
 - 1.01325×10^5 Pa
- Critical temperature is defined as: (DSSSB 2025 S2)**
 - The minimum temperature at which all the three forms of matter coexist
 - The maximum temperature above which the compound will remain in a gaseous state, despite the pressure applied
 - The maximum temperature below which a gas remains in the liquid state
 - The minimum temperature at which a liquid starts boiling
- The eutectic point is the: (DSSSB 2025 S2)**
 - Lowest temperature above which both compounds will be only in liquid state
 - Minimum temperature at which both compounds are in solid stage at a particular concentration
 - Minimum temperature at which two compounds start melting
 - Minimum temperature at which a mixture of two compounds starts boiling
- A vapor is**
 - A very dense gas
 - A gas with weak Vander Waals forces
 - A gas that is normally a liquid
 - A liquid that is normally a gas
- Triple point of water corresponds the change of state from a solid directly to a gas is known as:**
 - Fusion
 - Boiling
 - Sublimation
 - Evaporation
- Which of the following characteristics are NOT shared by liquids and gases?**
 - Ability to diffuse
 - Indefinite volume
 - Indefinite shape
 - Fluidity
- The critical point of a pure substance is:**
 - The highest temperature and pressure for which liquid and vapour can coexist
 - The point at which the saturated liquid and saturated vapour curves meet
 - The point where vapour pressure has its largest possible value
 - All of the above
- The quantity of heat absorbed when a change of state from liquid to vapour occurs at its boiling point without changing the temperature of the material is known**
 - Latent heat of fusion
 - Latent heat of vaporization
 - Latent heat of sublimation
 - Latent heat of condensation
- One of the assumptions of the ideal gas law is that:**
 - Molecules have no attraction to one another
 - Gas particles move very slowly
 - Molecules move in curved paths
 - None of the above

Micromeritics

- Micromeritics refers to the study of (Raj. Pharmacist 2012, ISRO 2021)**
 - Microscopes
 - Microorganisms
 - Metric system of measurement
 - Small particles
- "Brownian motion is observed if the particle size is reduced to (RRB 2019 P2)**
 - 8 microns
 - 4 microns
 - 6 microns
 - 2 microns
- Coulter current method used for determination of (APCSCR 2015, AIIMS 2018)**
 - Number of particles
 - Particle volume
 - Particle size
 - All of these
- According to Kozeny Carman equation a 10% change in porosity can produce (AIIMS 2018)**
 - Two-fold change in viscosity
 - Five-fold change in viscosity
 - Three-fold change in viscosity
 - None of these

Biopharmaceutics and Pharmacokinetics

6

- The comparison of bioavailability between two dosage forms is referred as (Raj. NHM 025)**
 - Bioavailability
 - Biopharmaceutics
 - Bioequivalence
 - Biological
- Which of the following methods is used for the measurement of bioavailability? (NFL 2025 Set B)**
 - Plasma Level Studies
 - Urinary Excretion Studies
 - Acute Pharmacological Effect
 - All of these
- C_{max} refers to: (NFL 2025 Set B)**
 - The minimum concentration of the drug in the blood.
 - The therapeutic index of the drug.
 - The maximum concentration of the drug achieved in the blood after administration.
 - The time it takes to achieve half the maximum concentration.
- What is measured by comparing the AUC of a drug given orally to the AUC of the same drug given intravenously? (NFL 2025 Set B)**
 - C_{max}
 - T_{max}
 - Clearance
 - Bioavailability
- T_{max} is defined as: (NFL 2025 Set B)**
 - The time taken to reach the maximum concentration in plasma after administration.
 - The minimum concentration of drug in the plasma.
 - The time required for half of the drug to be eliminated from the body.
 - The maximum concentration of the drug in the plasma.
- Which method can be used for calculating the Area Under the Curve (AUC)? (NFL 2025 Set B)**
 - Planimeter
 - Cut and Weigh Method
 - Trapezoidal Rule
 - All of these
- If a structurally different drug provides the same therapeutic or clinical response as another drug, the two are considered as being (KPSC 2025)**
 - Nonequivalent
 - Therapeutic equivalent
 - Clinical equivalent
 - Chemical equivalent
- What is the effect of reducing particle size on dissolution rate? (DSSSB 2025 S1)**
 - Increase in dissolution rate
 - Decrease in dissolution rate
 - Change in amount of substance that dissolves in solvent
 - No effect on dissolution rate
- Relative bioavailability compares: (RRB 2025 S4)**
 - Two oral formulations of the same drug
 - Plasma levels across species
 - A drug's absorption in fasting vs. fed states
 - Two different routes of administration
- How is bioequivalence statistically evaluated? (RRB 2025 S2)**
 - Kaplan-Meier analysis
 - Analysis of variance (ANOVA)
 - Chi-square test
 - Pearson correlation
- In determining the absolute bioavailability, systemic availability of a drug administered orally is determined by comparing it with: (RRB 2025 S2)**
 - Intravenous administration
 - Rectal administration
 - Intramuscular administration
 - Sublingual administration
- Which of the following factors affect the dose and form of a drug in an individual (OSSSC 2024)**
 - Route of administration
 - Body weight
 - Only I
 - Only II
 - Both I and II
 - Neither I nor II
- Which factor can influence the rate of drug absorption? (OSSC 2024)**
 - Drug metabolism
 - Food in the stomach
 - Excretion rate
 - Distribution to tissues
- In the context of pharmacokinetics, what does the term "half-life" represent (OSSC 2024)**
 - The time it takes for a drug to reach its peak concentration
 - The time it takes for half of the drug to be eliminated from the body
 - The duration of action of a drug
 - The time it takes for a drug to be absorbed in the body
- Nitroglycerin (NTG) is distinguished by _____ membrane penetrability and very _____ stability. (HSSC 2024)**
 - Low and high
 - High and low
 - Low and low
 - High and high
- Absorption from the intestine causes the drug concentration in blood to (HSSC 2024)**
 - Remain same
 - Increase
 - Decrease
 - None of the above

General Principles of Law, History and various Acts related to Drugs and Pharmacy profession

- The drugs enquiry committee was also known as the _____ committee. (NFL 2025 Set B)**
(a) Chopra (b) Bhatia (c) Hathi (d) Mudaliar
- In 1941 the first Central drug laboratory was founded in (Raj. NHM 2025)**
(a) Delhi (b) Mumbai (c) Calcutta (d) Bhopal
- The Government of India appointed a committee styled as the Drug Enquiry Committee in 1930, which was later known as: (AIIMS Raipur 2023)**
(a) Chadha Committee (b) Chopra Committee
(c) Gupta Committee (d) Sharma Committee
- All India Pharmaceutical Congress Association was started in (MRBTN 2023)**
(a) 1940 (b) 1932 (c) 1936 (d) 1948
- Hathi committee has recommended that IV fluids manufacturing in hospitals should be done under the supervision of a person with qualification. (MRBTN 2023)**
(a) M. Pharm (b) B. Pharm
(c) Pharm D (d) D. Pharm
- Acharya PC. Ray in 1901 established the (Delhi Pharmacist 2021)**
(a) Bengal Chemical and Pharmaceutical Works at Calcutta
(b) Alembic Chemical Works at Baroda
(c) Bengal Chemical and Pharmaceuticals at Calcutta
(d) A small factory at Parel (Bombay)
- Who among the following is referred to the Father of Indian Pharmacy (ESIC 2019)**
(a) M. L. Schroff (b) Ashima Chatterjee
(c) R. N. Chopra (d) H. G. Khorana
- The field of pharmacy that concerns with the lawful practices and judiciary approval of different pharmacy products is (CGHS Bangalore 2019)**
(a) Pharmacy administration (b) Drug regulatory affairs
(c) Both (a) and (b) (d) Pharmacy practice
- Pharmacy bill introduced by government of India in the year (DSSSB 2017, KPSC 2018)**
(a) 1948 (b) 2016 (c) 1940 (d) 1945
- Which city housed the Alembic Chemical Works established in 1907?**
(a) Calcutta (b) Bombay (c) Vadodara (d) Madras
- Which resolution was moved in 1927 to control the craze of medicinal drugs?**
(a) Quinine Fraud Act
(b) Pharmacy Regulation Act
(c) Sir Haroon Zaffer's Resolution
(d) Council of States Resolution
- Which act was demanded by Lt. Col. H. A. J. Gidney in 1928 to tackle adulterated drugs?**
(a) Patent Act
(b) Pharmacy and Poisons Act
(c) Indian Medical Council Act
(d) Import and Export Act
- Which Committee was formed in 1927 to address the problems of drug adulteration in India?**
(a) Mudaliar Committee (b) Chopra Committee
(c) Bhore Committee (d) Hathi Committee
- The Drugs Enquiry Committee included Dr. B. Mukherjee, who was later appointed as the Director of:**
(a) Indian Pharmacopoeia Commission
(b) Central Drugs Standard Control Organization
(c) Central Drugs Research Institute
(d) Central Drugs Laboratory
- Which Act was in force before 1940 but deemed insufficient to control drug adulteration in India?**
(a) Drugs Act, 1940
(b) Narcotic Drugs Act, 1928
(c) Dangerous Drugs Act, 1930
(d) Drugs and Cosmetics Act, 1945
- What was the main purpose of the Import of Drugs Bill introduced in 1937?**
(a) To ban alcohol-based drugs
(b) To promote British-manufactured drugs
(c) To regulate the quality of imported drugs
(d) To revise Indian Pharmacopoeia
- Who was appointed Director of the Biochemical Standardization Laboratory in Calcutta in 1937?**
(a) Col. R. N. Chopra (b) Dr. R. D. Bhatia
(c) Dr. B. Mukherjee (d) Prof. J. H. Gidney
- The Health Survey and Development Committee was formed under the chairmanship of:**
(a) Col. R. N. Chopra (b) Dr. R. D. Bhatia
(c) Sir Joseph Bhore (d) Lt. Col. Gidney

Drugs and Cosmetics Act 1940 and Rules 1945 and New Amendments

Objectives, Definitions, Legal definitions of schedules to the Act and Rules

- Under Drugs and Cosmetics Act; Schedule FF contains the list of the following (SECL 2013, Raj. NHM 2012 P3, KPSC 2015, RRB 2015, ISRO 2017, KPSC 2025)
 - Drugs which can be marked under generic names only
 - Drugs which are habit forming
 - Standards for ophthalmic preparation
 - Drugs which are exempt from certain provisions applicable to manufacturing
- List of diseases and ailments which a drug may not purport to prevent or cure or make claims to prevent or cure under the Drugs and Cosmetics Rule 1945 is given under (KPSC 2015, HPSSC 2016, KPSC 2025, NFL 2025 Set B)
 - Schedule J
 - Schedule K
 - Schedule M
 - Schedule P
- Which of the following schedules to the Drug and Cosmetics Rules refers to requirements for a pharmacy (DSSSB 2019, HPSSC 2022, NFL 2025 Set B)
 - Schedule M
 - Schedule N
 - Schedule O
 - Schedule P
- A modern drug store should fulfil all minimum requirements as specified in _____ of the Drugs and Cosmetics Act 1940 and Rules 1945 (KPSC 2020, DSSSB 2025 S2)
 - Schedule M
 - Schedule N
 - Schedule P
 - Schedule S
- List of narcotic drugs and psychotropic substances are listed in (MP Pharmacist 2020 P2, Raj. NHM 2025)
 - Schedule U
 - Schedule R
 - Schedule W
 - Schedule X
- The Drugs and Cosmetic Act was passed with main objective to: (KPSC 2025)
 - To register a pharmacist
 - Regulate import, manufacture, distribution, and sale of drugs and cosmetics
 - Raise the status of the profession of pharmacy
 - Providing uniform education to pharmacists
- According to the Drugs and Cosmetics Act, a drug or medicine of Ayurveda, Siddha, Unani, or any other system of medicine that is NOT included in the edition of pharmacopoeia or any other pharmacopoeia is known as _____ drug. (NFL 2025 Set B)
 - Misbranded
 - Spurious
 - Patent/proprietary
 - Adulterated
- The provisions related to Ayurvedic, Siddha and Unani drugs are mentioned in which chapter of the Drugs and Cosmetics Act, 1940? (Raj. NHM 2025)
 - Chapter II
 - Chapter III
 - Chapter IV-A
 - Chapter V
- Which Schedule of the Drugs and Cosmetics Act, 1940, includes drugs belonging to the Digitalis group and their preparations, as well as Ergot and its preparations? (Raj. NHM 2025)
 - Schedule C
 - Schedule C1
 - Schedule D1
 - Schedule X
- Provisions for bacterial vaccines, viral vaccines, anti-sera, diagnostic antigens, etc. are depicted in (MPPG-CL 2025)
 - Schedule E(I)
 - Schedule F(I)
 - Schedule C(I)
 - Schedule D(I)
- The schedule in D and C act that deals with the pack sizes of drugs is (HSSC 2017, MHSRB 2024)
 - Schedule P1
 - Schedule K
 - Schedule R
 - Schedule S
- Schedule P of Drugs and Cosmetics Act refers to (Raj. NHM 2012 P3, ISRO 2017, CGHS Bangalore Pharmacist 2019, MP Pharmacist 2020 P2, DH MH 2021, MPESB 2022, KPSC 2022, ISRO 2024)
 - Provisions for disinfectants
 - Life period of drugs
 - Pack sizes of drugs
 - Standards for contraceptives
- The schedule in Drugs and Cosmetics Act that deals with requirement and guidelines of the clinical trial import and manufacture of new drug is (SECL 2013, HPSSC 2016, ESIC 2016, DSSSB 2017, KPSC 2018, BRKM 2018, CGHS Bangalore 2019, AMC 2022, MPESB 2022, OSSSC 2020, 2023, ISRO 2024)
 - Schedule O
 - Schedule M
 - Schedule F
 - Schedule Y
- Chapter-III of Drugs and Cosmetics Act 1940 and Rules 1945 gives information about (RRB 2019 P1, P2, AIIMS Raipur 2023)
 - Import of drugs and cosmetics
 - Manufacture, sale and distribution of drugs and cosmetics
 - Provisions relating to Ayurvedic, Siddha and Unani drugs
 - Drugs technical advisory board
- Poisonous drugs are covered in (OSSSC 2021, 2023)
 - Schedule E1
 - Schedule Y
 - Schedule F
 - Schedule X
- Which of the following drug must to be sold by retail only after producing a prescription by a registered medical practitioner (Raj. NHM 2012 P3, NCA 2015, KPSC 2015, ESIC 2016, MPESB 2017, BFUHS 2018, HPSSC 2020, CGHS Bangalore 2019, DHS MH 2021, MPESB 2022, BFUHSCM 2022, OSSSC 2021, 2023)

- (d) Certificate of renewal of exhibit or offer for sale or distribute Homoeopathic medicines
- 109. Expiry period of drug preparations included in Schedule "P" of the Drug of Drugs & Cosmetics Rules 1945, cannot exceed (AIIMS 2012)**
- (a) 12 months from date of manufacture
(b) 24 months from date of manufacture
(c) 120 months from date of manufacture
(d) 60 months from date of manufacture
- 110. As per Drugs & Cosmetics Rules 1945 'Cool place' means a place having temperature (AIIMS 2012)**
- (a) Between 8°C to 25°C (b) Between 4°C to 8°C
(c) Not exceeding 80°C (d) Not exceeding 8°C
- 111. License to operate "Blood Bank" is granted by (AIIMS 2012)**
- (a) Director of medical and Health Services of the State.
(b) Medical council of state
(c) Drug Licensing Authority of state
(d) Chief Medical and Health Officer of the concerned district
- 112. What is minimum space requirement for Manufacturing ASU drugs (Raj. NHM 2011)**
- (a) 1200 sq. ft. (b) 1600 sq. ft.
(c) 1800 sq. ft. (d) 1300 Sq. ft.
- 113. What is minimum space requirement for Manufacturing Asava/Arishta (Raj. NHM 2011)**
- (a) 150 sq. ft. (b) 250 sq. ft.
(c) 200 sq. ft. (d) 100 sq. ft.
- Study of schedule C and C1, G, H, H1, K, P, M, N, and X**
- 114. The preparation that should contain cautionary labels in both the inner and outer labels is: (BTSC 2025)**
- (a) Hair dye (b) Hair conditioner
(c) Hair shampoo (d) Hair revitalizer
- 115. As per Schedule P, Sodium Valproate tablets should be stored in/at: (KPSC 2025)**
- (a) A cold place
(b) Temperature not exceeding 5°C
(c) A cool dry place away from heat and direct light
(d) A temperature below 25°C
- 116. Amoxicillin + Clavulanic Acid tablets come under: (KPSC 2025)**
- (a) Schedule P (b) Schedule H
(c) Schedule X (d) Schedule F
- 117. Ketamine injection 10 mg/ml falls under which drug schedule in India? (Raj. NHM 2025)**
- (a) Schedule H (b) Schedule X
(c) Schedule G (d) Schedule H1
- 118. Ibuprofen tablet belongs to schedule (OSSSC 2020, 2023)**
- (a) X (b) G (c) H (d) B
- 119. Which of the following is a schedule X drug (MPESB 2022)**
- (a) Thalidomide (b) Amoxycillin
(c) Ketamine (d) Halothane
- 120. The label schedule X drugs contain symbol in left hand top corner is the (KPSC 2022)**
- (a) XRx (b) NRx (c) Rx (d) XXRx
- 121. Which of the following is a Schedule G drug (Delhi Pharmacist 2021)**
- (a) Heparin
(b) Labetalol HCl
(c) Barbituric acid, its salts and derivatives
(d) Hydantoin, its salts; its derivatives and their salts
- 122. The drug Clofazimine comes under schedule (KPSC 2021 P2)**
- (a) G (b) H (c) W (d) X
- 123. Example of schedule 'C' drugs (DHS MH 2021)**
- (a) Tonics (b) Sera
(c) Benzylpenicillin (d) None of these
- 124. Which schedule specifies the retailer to keep a copy of the prescription for two years while selling certain class of drugs (KPSC 2021 P1)**
- (a) Schedule H (b) Schedule X
(c) Schedule F (d) Schedule C
- 125. Digitalis belongs to schedule (HPSSB 2020)**
- (a) E (b) X (c) G (d) H
- 126. Example of schedule X drug is (HPSSB 2020)**
- (a) Ciprofloxacin (b) Amphetamine
(c) Quinidine (d) Diazepam
- 127. A new Schedule was recently introduced in the Drugs and Cosmetics Rules for listing Carbapenem class III and IV generation antibiotics. Which one is it (DSSSB 2019)**
- (a) Schedule P1 (b) Schedule H1
(c) Schedule X (d) Schedule Z
- 128. Which of the following can be marketed under generic name (ESIC 2019)**
- (a) Analgin (b) Glutethimide
(c) Barbitol (d) Meprobamate
- 129. Secobarbital belongs to (KPSC 2017)**
- (a) Schedule J (b) Schedule A
(c) Schedule X (d) Schedule G
- 130. Ampicillin capsule should be used within 24 months; this statement comes under (ESIC 2016)**
- (a) Schedule C (b) Schedule R
(c) Schedule M (d) Schedule P

4. Under BMW color coding, which items fall under the Red category?
- Human anatomical waste
 - Broken glass and implants
 - Recyclable items like IV tubes, gloves, syringes (without needles)
 - Metal sharps
5. The Bio-Medical Waste Management (Amendment) Rules, 2018 mandated phasing out chlorinated plastic bags and gloves by:
- March 27, 2018
 - March 27, 2019
 - January 1, 2020
 - April 1, 2019
6. Which color code is assigned to discarded and contaminated metal sharps?
- Yellow
 - Blue
 - White (Translucent)
 - Red
7. Under BMW Rules, which color category includes broken glassware and metallic body implants?
- Red
 - Yellow
 - White
 - Blue
8. Which authority monitors and enforces BMW Rules at the central level?
- State Pollution Control Board
 - Ministry of Health
 - Central Pollution Control Board (CPCB)
 - Indian Council of Medical Research
9. The BMW Rules mandate barcoding and GPS tracking of BMW handling to be implemented by:
- March 27, 2018
 - March 27, 2019
 - December 31, 2019
 - April 1, 2020
10. Which waste category includes chemical liquid waste from laboratories?
- Yellow
 - Red
 - Blue
 - White
11. One key objective of BMW Rules 2016 is to prevent the emission of which harmful compounds during waste burning?
- Dioxins & Furans
 - Sulphur dioxide & Nitrogen dioxide
 - Carbon monoxide & Ozone
 - Methane & Ethane
12. Which body is responsible for evaluating BMW data from districts before sending it to CPCB?
- Ministry of Environment
 - State Pollution Control Boards / Pollution Control Committees
 - WHO India
 - Ministry of Health & Family Welfare
13. Improper biomedical waste disposal can lead to:
- Soil & water contamination
 - Disease spread
 - Environmental pollution
 - All of the above
14. The BMW Rules 2016 mandate storage of biomedical waste for not more than:
- 24 hours
 - 48 hours
 - 72 hours
 - 96 hours
15. Pre-treatment of laboratory and microbiological waste before sending to common facilities must follow:
- CDC guidelines
 - WHO guidelines
 - ICMR guidelines
 - Hospital policy only

Bioethics

1. Which of the following is the correct definition of Bio Ethics? (AIIMS Patna 2023)
- It refers to the study of moral beliefs of the people
 - It deals with origin of ethical principles that govern the specification of right and wrong behavior
 - The ethical principles or codes designed for a medical profession
 - These are the ethical principles or codes for maintaining normal livelihood
2. Public health ethics is a branch of
- Medical ethics
 - Bio ethics
 - Abortion
 - Care
3. "Something is good or bad depends on its outcome" is called
- Consequentialism
 - Deontology
 - Ontology
 - Sequentism
4. "The right action is not determined by its consequences" is called
- Care theory
 - Normative theory
 - Deontology
 - Conservatism
5. _____ treats the concept of moral virtue as central
- Virtue ethics
 - Care ethics
 - Bio ethics
 - Honest ethics
6. Bio banking means—
- Collection and preservation of organs
 - Organized collections and storage of human biological samples
 - Preservation and research related to organs
 - None of these
7. Confidentiality in health care includes—
- Right of an individual that their personal information and medical information is kept private
 - Right of the patient to disclose or not to disclose their health details
 - Confidential nature of individual health details
 - None of these
8. Among these options which is not included in informed consent—
- The process in which a health care provider educates a patient about the risks

2. **The Medical Device (Amendment) Rules 2020 introduced which key change?**
 - (a) Prohibition of imports
 - (b) Classification of non-notified medical devices
 - (c) Ban on foreign manufacturers
 - (d) Removal of licensing
3. **Which year did the “Make in India” campaign include medical devices as a focus sector?**
 - (a) 2013 (b) 2014 (c) 2015 (d) 2016
4. **In 2015, Government of India announced the creation of medical device parks in which states?**
 - (a) Haryana, Gujarat, Maharashtra, Telangana, Karnataka, TN, Andhra Pradesh
 - (b) Delhi, Punjab, Rajasthan, Kerala, Goa
 - (c) UP, Bihar, MP, West Bengal, Assam
 - (d) Gujarat, Odisha, J&K, Himachal Pradesh
5. **According to MDR 2017, which class represents low-risk devices?**
 - (a) Class A (b) Class B (c) Class C (d) Class D
6. **Which of the following is an example of Class C medical device?**
 - (a) Surgical staples (b) Intracranial lenses
 - (c) Blood collection bags (d) Surgical gloves
7. **Which category includes devices with high risk to the wellness of patients, such as heart valves?**
 - (a) Class A (b) Class B (c) Class C (d) Class D
8. **Which schedule in MDR 2017 covers Quality Management System (QMS)?**
 - (a) First Schedule (b) Fourth Schedule
 - (c) Fifth Schedule (d) Sixth Schedule
9. **How many chapters are there in MDR 2017?**
 - (a) 8 (b) 10 (c) 12 (d) 14
10. **Which of the following is NOT listed as a purpose of a medical device in MDR Amendment Rules 2020?**
 - (a) Diagnosis or prevention of disease
 - (b) Supporting or sustaining life
 - (c) Disinfection of medical devices
 - (d) Increasing immunity via vaccines
11. **“Control of conception” is classified under MDR Amendment Rules 2020 as:**
 - (a) Not related to medical devices
 - (b) A specific purpose for a medical device
 - (c) Part of Class D devices only
 - (d) A non-medical use
12. **MDR 2017 applies to:**
 - (a) Medical devices only
 - (b) In-vitro diagnostics only
 - (c) Both medical devices and in-vitro diagnostics
 - (d) Drugs and cosmetics only
13. **How many schedules are there under MDR 2017?**
 - (a) 6 (b) 8 (c) 10 (d) 12
14. **Which schedule deals with “Notified bodies function and registration”?**
 - (a) First Schedule (b) Third Schedule
 - (c) Fifth Schedule (d) Eighth Schedule
15. **Which of the following is included in the definition of “medical device”?**
 - (a) Surgical dressings, sutures, ligatures, blood collection bags
 - (b) Mechanical contraceptives like condoms, IUDs, tubal rings, disinfectants, insecticides notified by Govt.
 - (c) Devices notified under section 3(b)(iv) of the Act
 - (d) All of the above

ANSWER KEY

General Principles of Law, History and various Acts related to Drugs and Pharmacy profession

1-a	2-c	3-b	4-a	5-a	6-a	7-a	8-b	9-d	10-c
11-c	12-b	13-b	14-d	15-c	16-c	17-a	18-c	19-d	20-a

Pharmacy Act-1948 and Rules & Pharmacy Practice Regulations 2015

1-b	2-a	3-c	4-d	5-b	6-c	7-c	8-d	9-a	10-c
11-a	12-d	13-c	14-a	15-a	16-d	17-c	18-c	19-c	20-a
21-a	22-d	23-a	24-b	25-d	26-a	27-d	28-b	29-c	30-a
31-b	32-c	33-b	34-b	35-c	36-b	37-a	38-c	39-c	40-a
41-b	42-a	43-d	44-c	45-d	46-d	47-b	48-d	49-d	50-d

General Pharmacology

Introduction to Pharmacology

- The name given to a drug by the manufacturer is known as: (RRB 2025 S4)**
(a) Non-proprietary name (b) Chemical name
(c) Proprietary name (d) Generic name
- The study of the poisonous effect of drugs is known as: (RRB 2025 S2)**
(a) Toxicology (b) Pharmacy
(c) Pharmacotherapeutics (d) Clinical pharmacology
- What is the brand name of a drug also known as? (BTSC 2025)**
(a) Chemical name
(b) Generic name
(c) USAN (United States Adopted Name)
(d) Trade name
- The word drug is believed to have been derived from the French word drogue, which refers to: (HSSC 2024)**
(a) Gaseous substance (b) Dry substance
(c) Wet substance (d) Moist substance
- _____ is first to verify by animal experimentation assertions about pharmacological or toxicological actions. (HSSC 2024)**
(a) Claudius Galen
(b) Theophrastus von Hohenheim
(c) Johann Jakob Wepfer
(d) Rudolf Buchheim
- Toxicological investigations serve to evaluate the potential for (HSSC 2024)**
(a) Toxicity associated with acute or chronic administration
(b) Genetic damage
(c) Production of tumors
(d) All of the above
- Who first attempted to consider the theoretical background of pharmacology? (HSSC 2024)**
(a) Claudius Galen
(b) Theophrastus von Hohenheim
(c) Johann Jakob Wepfer
(d) Rudolf Buchheim
- Who among the following personalities is considered as the father of modern pharmacology: (MPPGCL 2024)**
(a) Corwin Hansch (b) Oswald Schmiedeberg
(c) Claudius Galenus (d) William Procter
- _____ is the science of poisons which are harmful, dangerous or fatal to humans (OSSC 2024)**
(a) Pharmacodynamics (b) Pharmacy
(c) Toxicology (d) Pharmacoeconomics
- OTC stands for (AIIMS Bhubaneswar 2023, OSSC 2024)**
(a) Over-The-Counter (b) On-The-Clock
(c) Out-of-the-Country (d) Over-the-cabinet
- Medication taken for prevention of disease is known as (OSSC 2024)**
(a) Pre-workout drug (b) Prophylactic drug
(c) Early drug (d) Recharge drug
- What is the term for the study of the interaction between drugs and living systems? (AIIMS Bhubaneswar 2023)**
(a) Pharmacology (b) Pathology
(c) Microbiology (d) Physiology
- What is the proprietary name of Ribavirin, BP? (AIIMS Raipur 2023)**
(a) Virazole (b) Foscavir
(c) Zidorex (d) Retrovir
- The International Nonproprietary Names (INN) system is used to: (SSB 2023)**
(a) Identify drugs based on their chemical structure.
(b) Provide a unique name for each brand of a drug.
(c) Create a unique global standard for the identification of pharmaceutical substances.
(d) Classify drugs based on their therapeutic use.
- In drug nomenclature, what does the 'generic name' of a drug represent? (SSB 2023)**
(a) Name used for marketing purposes
(b) Trade name given by manufacturers
(c) Authorized name of the drug regardless of manufacturers
(d) Chemical name of the medicine
- _____ deals with the proper selection and use of drugs for the prevention and treatment of disease. (ITBP 2023)**
(a) Pharmacokinetics (b) Pharmacodynamics
(c) Pharmacopoeia (d) Pharmacotherapeutics
- Identify the drug obtained from synthetic source? (MP Pharmacist 2020 P2, ITBP 2023)**
(a) Penicillin (b) Morphine
(c) Aspirin (d) Streptomycin

27. The route of administration of vaccine BCG is (CGHS Delhi 2018)
 (a) Oral (b) Intra-muscular
 (c) Intravenous (d) Intra-dermal
28. 'Depot therapy' is possible with which route of administration (BRKM 2018)
 (a) Oral (b) Topical
 (c) Intravenous (d) Intramuscular
29. What is the important characteristic of the intramuscular route of drug administration (DSSSB 2015)
 (a) Only water solutions can be injected
 (b) Only solutions can be injected
 (c) Opportunity of hypertonic solution injections
 (d) The action develops slower, than at oral administration
30. Uses of isotonic saline do not include (Raj. NHM 2016 P2)
 (a) I.V. injection
 (b) Intra-cutaneous injection
 (c) Sub-cutaneous injection
 (d) Injection into varicose veins
31. All these drugs are ineffective orally due to liver metabolism except (ESIC 2016, BSSC 2018)
 (a) Testosterone (b) Insulin
 (c) Lidocaine (d) NTG
32. Which of the following avoids first pass effect of the Drugs (ESIC 2016)
 (a) Oral ingestion (b) Rectal suppository
 (c) Intravenous injections (d) None of these
33. Effect of injecting hypotonic saline intravenously (MH Pharmacist 2012, KPSC 2015, Raj. NHM 2016 P1)
 (a) Damage to venous walls
 (b) Raise in the blood pressure
 (c) Hemolysis
 (d) Diuresis
34. Which of the following drug is commonly administered by intranasal route (HPSSC 2016)
 (a) Insulin (b) Adrenaline
 (c) Desmopressin (d) Ganirelix
35. Polio vaccine can be administered by route in newborn (RRB 2015)
 (a) IM (b) SC (c) Topical (d) Oral
36. Which of the following routes of drug administration is not parenteral (ESIC 2014)
 (a) Intravenous (b) Subcutaneous
 (c) Intradermal (d) Sublingual
37. Which type of force act in drug receptor interaction (BPKMC 2014)
 (a) Covalent (b) Electrostatic
 (c) Hydrophobic (d) All of these
38. The drug is placed under the tongue and allow to dissolve, this process is called as (Raj. NHM 2014)
 (a) Parenteral administration
 (b) Oral administration
 (c) Sublingual administration
 (d) Intradermal administration
39. Transdermal patches are designed to:
 (a) Provide immediate high plasma drug concentration
 (b) Be applied only on the scalp
 (c) Completely avoid local irritation
 (d) Deliver drug at a constant and predictable rate
40. Why is the rectal route considered beneficial for unconscious patients?
 (a) It allows the drug to be absorbed through the stomach lining.
 (b) It bypasses the digestive system and the liver, ensuring faster drug action.
 (c) It requires less equipment for drug delivery.
 (d) It delivers a local effect to the site of infection.

Pharmacokinetics

1. What is the role of P-glycoprotein in drug absorption? (RRB 2025 S4)
 (a) Facilitates uptake (b) Acts as a receptor
 (c) Enhances absorption (d) Mediates efflux
2. Which enzyme system is most commonly involved in drug metabolism interactions? (RRB 2025 S4)
 (a) Alcohol dehydrogenase
 (b) UDP-glucuronosyltransferase
 (c) Cytochrome P450
 (d) Monoamine oxidase
3. What is the main purpose of Phase I reactions in drug metabolism? (BTSC 2025)
 (a) To directly excrete the drug
 (b) To introduce or unmask polar groups
 (c) To bind the drug to plasma proteins
 (d) To conjugate drugs with glucuronic acid
4. What is the usual goal of drug metabolism in terms of solubility? (BTSC 2025)
 (a) Convert polar drugs to non-polar drugs
 (b) Enhance the lipid solubility of polar drugs
 (c) Convert lipophilic drugs into more polar, excretable products
 (d) Prevent the drug from entering systemic circulation
5. Which one of the following choices is NOT considered as a Phase 2 reaction? (NFL 2025 Set B)
 (a) Methylation (b) Sulphation
 (c) Oxidation (d) Conjugation
6. Which of the options listed is a prodrug? (NFL 2025 Set B)
 (a) Aspirin (b) Sulfasalazine (c) Sulindac (d) Naproxen

57. There are some undesirables but unavoidable pharmacodynamics effects of a drug, which are known as (ESIC 2016)
 (a) Toxic effects (b) Idiosyncrasy
 (c) Side effects (d) Intolerance
58. Characteristic unwanted reaction which isn't related to a dose or to a pharmacodynamic property of a drug is called (DSSSB 2015)
 (a) Idiosyncrasy (b) Hypersensitivity
 (c) Tolerance (d) Teratogenic action
59. Antidote used in Cyanide poisoning (BCCL 2013, 2015)
 (a) Sodium thiosulphate
 (b) Sodium benzoate
 (c) Sodium potassium tartrate
 (d) Sodium nitrite and sodium thiosulphate
60. Type B adverse drug reaction (KPSC 2015)
 (a) Augmented effect of drug
 (b) Unpredictable Bizarre reaction
 (c) Effect seen on chronic use of drug
 (d) Delayed effect of drug
61. Which of the following when taken by pregnant women, is found to be cause of deformed children (RRB 2015)
 (a) Glycerol (b) Xylidin
 (c) Thalidomide (d) None of these
62. The following are methods of adverse reaction monitoring except (RRB 2015)
 (a) Potency (b) Safety (c) Toxicity (d) Efficacy
63. The medicine, which reduces the effect of poison, is called (RRB 2015)
 (a) Anti-histamines (b) Antidote
 (c) Antacid (d) Anti-emetics
64. Iatrogenic disease means (KPSC 2015 P2)
 (a) Drug induced disease (b) Systemic infections
 (c) Patient induced disease (d) Contagious disease
65. Antidote for Heparin is (ESIC 2014)
 (a) N-acetylcysteine (b) Glucagon
 (c) Methylene blue (d) Protamine sulphate
66. Sodium bicarbonate infusion is given in poisoning (CCF 2014)
 (a) Aspirin (b) Morphine (c) Diazepam (d) All of these
67. An extension of the normal pharmacological effect of a drug or its metabolite is termed (MH Pharmacist 2012)
 (a) Type C ADR (b) Type D ADR
 (c) Type A ADR (d) Type B ADR
68. Phocomelia is an adverse effect of (Raj. NHM 2012 P1)
 (a) Warfarin (b) Phenytoin
 (c) Thalidomide (d) Indomethacin
69. Idiosyncratic reactions to drugs are (MH Pharmacist 2012)
 (a) Seen only in certain individuals
 (b) Unrelated with dose of drug administered
 (c) Often without explanation of cause
 (d) All of these
70. Which of the following drug interactions are due to displacement of drug from binding sites (AIIMS 2012)
 (a) Aspirin and Tolbutamide
 (b) Clofibrate and Warfarin
 (c) Sulphonamide and Bilirubin
 (d) Phenytoin and Isoniazid

Drugs Acting on ANS

Cholinergic System and Drugs

- Which neurotransmitter acts on the detrusor muscle to initiate contraction? (RRB 2025 S4)
 (a) Serotonin (b) Acetylcholine
 (c) Norepinephrine (d) Dopamine
- Anticholinesterase are commonly used as: (RRB 2025 S2)
 (a) Industrial pesticide
 (b) Agricultural and household insecticide
 (c) Agricultural fertilizer
 (d) Fungicide
- Which of the following drugs is an acetylcholinesterase inhibitor used in the treatment of Alzheimer's disease? (DSSSB 2025 S2)
 (a) Ipratropium (b) Atropine
 (c) Donepezil (d) Metoprolol
- Which of the following is an example of a reversible anticholinesterase under the carbamates category? (Raj. NHM 2025)
 (a) Physostigmine (b) Echothiopate
 (c) Muscarine (d) Carbachol
- _____ is a major neurohumoral transmitter at the autonomic nervous system (MPPGCL 2024)
 (a) Noradrenaline (b) Acetylcholine
 (c) Serotonin (d) Dopamine
- Diagnosis of myasthenia gravis is done by using (KSSSCI 2024)
 (a) Edrophonium (b) Neostigmine
 (c) Succinylcholine (d) Atropine
- Pinpoint pupil suggests poisoning with (KSSSCI 2024)
 (a) DDT (b) Opiates
 (c) Carbolic acid (d) Neostigmine
- Which neurotransmitter is primarily released at pre-ganglionic fibers of the parasympathetic nervous system? (MHSRB 2024)
 (a) Epinephrine (b) Dopamine
 (c) Norepinephrine (d) Acetylcholine

38. Zafirlukast is used as anti-asthmatic acts as (Raj. Pharmacist 2012 P1)
 (a) Prostaglandin antagonist
 (c) Cyclooxygenase inhibitor
 (b) Lipoxygenase Inhibitor
 (d) Leukotriene receptor antagonist
39. Aminophylline is used in (Raj. NHM 2012 P1)
 (a) Edema (b) Asthma
 (c) Ulcer (d) Depression
40. Mechanism of action of theophylline in bronchial asthma is
 (a) Phosphodiesterase 4 inhibition
 (b) Beta2 agonism
 (c) Anticholinergic action
 (d) Inhibition of mucociliary clearance
10. Vasopressin is released from (HPSSC 2016)
 (a) Parathyroid gland (b) Hypothalamus
 (c) Pituitary gland (d) Pineal gland
11. Which of the following is a Peptide hormone (NCL 2016)
 (a) Insulin (b) Aldosterone
 (c) Testosterone (d) All of these
12. Which hormone acts through a cytoplasmic receptor (BCCL 2015)
 (a) Renin (b) Prolactin
 (c) Vasopressin (d) Calcitriol
13. An example for adrenal cortex hormone (Raj. NHM 2012)
 (a) Dehydroepiandrosterone (b) Progesterone
 (c) Estradiol (d) Betamethasone
14. Which hormone regulates the availability of fuel in the body?
 (a) Insulin, Glucagon, Growth hormone
 (b) Thyroxine, Triiodothyronine
 (c) Aldosterone, Antidiuretic hormone
 (d) Parathormone, Vitamin D
15. Which hormone is the major regulator of metabolic rate?
 (a) Growth hormone, Insulin-like growth factors
 (b) Thyroxine, Triiodothyronine
 (c) Glucocorticoids, Adrenaline
 (d) Estrogens, Progestins

Hormones & Related Drugs

Introduction To Hormones

1. Oxytocin is a nonapeptide secreted by the (DGHS 2023)
 (a) Posterior pituitary (b) Spinal cord
 (c) Liver (d) Cochlea
2. How many amino acid in single chain peptide are present in ACTH? (DGHS 2023)
 (a) 26 (b) 15 (c) 39 (d) 53
3. The hormones released from neuro-hypophysis are (CGHS Hyd. 2018, DHS MH 2021)
 (a) Follicle stimulating hormone and luteinizing hormone
 (b) Prolactin releasing hormone and growth hormone
 (c) Antidiuretic hormone and oxytocin
 (d) Thyroid stimulating hormone and prolactin
4. The hormone produced by pancreas is (MP Pharmacist 2020 P2)
 (a) Prolactin (b) Bile (c) Insulin (d) Estrogen
5. Excess salt intake leads to (MP Pharmacist 2020 P2)
 (a) Blindness (b) Diabetes
 (c) Cancer (d) Hypertension
6. Which type of hormones are androgens (DSSSB 2019)
 (a) Glucocorticoid (b) Sex hormone
 (c) Mineralocorticoid (d) Growth hormone
7. Which of the following is a nonapeptide hormone produced by the posterior pituitary gland (ESIC 2019)
 (a) Oxytocin (b) Prolactin (c) Aldosterone (d) Thyroxine
8. Which one of the following drugs does NOT act through G-Protein coupled receptors (AIIMS 2018)
 (a) Epinephrine (b) Insulin (c) Dopamine (d) TSH
9. Which of the following has cytoplasmic receptor (HPSSC 2016)
 (a) Insulin (b) Cortisol (c) Epinephrine (d) FSH
16. Which hormone is secreted by the posterior pituitary?
 (a) Growth hormone (b) Thyroxine
 (c) Vasopressin (ADH) (d) Aldosterone
17. Parathyroid glands secrete which hormone?
 (a) Calcitonin (b) Parathormone (PTH)
 (c) Vitamin D (d) Aldosterone
18. Which of the following is secreted by the adrenal medulla?
 (a) Cortisol (b) Aldosterone
 (c) Noradrenaline (d) Calcitriol
19. Which hormone binds to cytoplasmic receptors?
 (a) Adrenaline (b) Vasopressin
 (c) Glucocorticoids (d) Insulin
20. Which hormone binds to nuclear receptors?
 (a) Thyroxine, Triiodothyronine
 (b) Adrenaline, Glucagon
 (c) Insulin, Growth hormone
 (d) Vasopressin, Oxytocin

Anterior Pituitary Hormones

1. GH promotes growth of bones and organs by:
 (a) Hyperplasia (b) Hypertrophy
 (c) Apoptosis (d) Fibrosis

4. Which of the following is an opioid analgesic (DHS Assam 2021)
 (a) Ibuprofen (b) Celecoxib (c) Naproxen (d) Pethidine
5. Which of the following agents is an opioid antagonist (KPSC 2021 P2)
 (a) Morphine (b) Naloxone
 (c) Amphetamine (d) Disulfiram
6. Abnormal perception in the absence of a stimulus is called (NTPC 2013, 2020)
 (a) Delusion (b) Illusion
 (c) Hallucination (d) Emotion
7. Amphetamine poisoning can be treated with (KPSC 2020)
 (a) Thiamine (b) Ascorbic acid
 (c) Sodium bicarbonate (d) Ammonia
8. Narcotics analgesics should (DSSSB 2015)
 (a) Relieve severe pain
 (b) Induce loss of sensation
 (c) Reduce anxiety and exert a calming effect
 (d) Induce a stupor or somnolent state
9. PTZ (Pentylenetetrazol) are used to:
 (a) Test antidepressant activity
 (b) Test anticonvulsant activity in animals
 (c) Test analgesic potency
 (d) Induce anesthesia
10. The main therapeutic use of Doxapram is:
 (a) Status epilepticus (b) ADHD
 (c) Apnoea in premature infants (d) Narcolepsy
11. Methylphenidate acts primarily by:
 (a) Blocking NMDA receptors
 (b) Releasing NA and DA in brain
 (c) Enhancing serotonin release
 (d) Blocking adenosine receptors
12. Atomoxetine is:
 (a) Selective serotonin reuptake inhibitor
 (b) Dopamine receptor agonist
 (c) Mixed NA and DA reuptake inhibitor
 (d) Selective NA reuptake inhibitor
13. Modafinil is approved for all EXCEPT:
 (a) Shift-work disorder (b) Narcolepsy
 (c) ADHD in children (d) Sleep-apnoea syndrome
14. Which psychostimulant has been discontinued in the USA due to hepatotoxicity?
 (a) Pemoline (b) Methylphenidate
 (c) Atomoxetine (d) Armodafinil
15. Which methylxanthine is mainly used as a CNS stimulant?
 (a) Theophylline
 (b) Theobromine
 (c) Caffeine
 (d) Aminophylline
16. Memantine acts mainly by:
 (a) Competitive NMDA antagonism
 (b) GABAA receptor antagonism
 (c) Non-competitive NMDA antagonism
 (d) Enhancing dopamine release
17. Piracetam is classified as a:
 (a) Nootropic (b) Benzodiazepine
 (c) CNS depressant (d) MAO inhibitor
18. Pyritinol is chemically related to:
 (a) Pyridoxine (b) Nicotinamide
 (c) Adenosine (d) Riboflavin
19. Citicoline is mainly involved in synthesis of:
 (a) Dopamine (b) Lecithin
 (c) Serotonin (d) Myelin basic protein
20. The drug of choice for picrotoxin poisoning is:
 (a) Flumazenil (b) Diazepam
 (c) Phenytoin (d) Thiopental

Drugs Acting On CVS

Cardiac Electrophysiology

1. Which cardiac tissue normally acts as the latent pacemaker?
 (a) SA node (b) Purkinje fibres
 (c) AV node (d) Ventricular fibres
2. Which myocardial fibres have a stable resting membrane potential during diastole?
 (a) Automatic fibres (b) Nonautomatic fibres
 (c) Purkinje fibres (d) SA nodal fibres
3. The primary ionic movement during phase-0 of a fast channel action potential is due to:
 (a) Ca^{2+} influx (b) Cl^{-} influx
 (c) K^{+} efflux (d) Na^{+} influx
4. Which of the following sites generate slow channel action potentials?
 (a) Ventricles (b) Purkinje fibres
 (c) SA and AV nodes (d) Atria
5. In slow channel fibres, ERP/APD ratio is typically:
 (a) < 1 (b) > 1 (c) $= 1$ (d) Cannot be determined
6. The slope of phase-4 depolarization is steepest in:
 (a) SA node (b) AV node
 (c) Purkinje fibres (d) Ventricular fibres
7. Tetrodotoxin and local anaesthetics selectively block which channel type?
 (a) Fast Na^{+} channels
 (b) Slow Ca^{2+} channels
 (c) K^{+} channels
 (d) Cl^{-} channels
8. Which drug selectively blocks slow Ca^{2+} channels?
 (a) Lidocaine (b) Quinidine
 (c) Verapamil (d) Tetrodotoxin

2. **What is the function of Antidiuretic Hormone (ADH)? (NFL 2025 Set B)**
 - (a) Maintaining glucose level in blood
 - (b) Maintaining Hb level in blood
 - (c) Production of melanin
 - (d) Regulating water balance by the kidneys
3. **Desmopressin is used in the treatment of: (ISRO 2024)**
 - (a) Type 2 Diabetes Mellitus
 - (b) Diabetes insipidus
 - (c) Nocturnal enuresis
 - (d) Both (b) and (c)
4. **Anti diuretic hormone acts on (MPESB 2017, ESIC 2019, MRBTN 2023)**
 - (a) Proximal convoluted tubule
 - (b) Collecting duct
 - (c) Ascending limb of loop of Henle
 - (d) Descending limb of loop of Henle
5. **The primary role of antidiuretic hormone (ADH) in water and electrolyte balance is to: (SSB 2023)**
 - (a) Increase urine production.
 - (b) Enhance sodium reabsorption in the kidneys.
 - (c) Increase water reabsorption in the kidneys.
 - (d) Decrease blood pressure.
6. **Which of the following is an antidiuretic hormone (ESIC 2016, BFUHS 2018)**
 - (a) Oxytocin
 - (b) Follicle stimulating hormone
 - (c) Vasopressin
 - (d) Luteinizing hormone
7. **Which of the following is the primary physiological stimulus for ADH (vasopressin) release?**
 - (a) Rise in plasma potassium
 - (b) Rise in plasma osmolarity
 - (c) Fall in plasma calcium
 - (d) Rise in blood glucose
8. **V1a receptors mediate which of the following effects of vasopressin?**
 - (a) Increased water reabsorption in collecting ducts
 - (b) Increased urea permeability in collecting ducts
 - (c) Release of coagulation factor VIII
 - (d) Vasoconstriction and platelet aggregation
9. **Tolvaptan acts as:**
 - (a) V1a receptor agonist
 - (b) V1b receptor antagonist
 - (c) V2 receptor antagonist
 - (d) Mixed V1a and V2 antagonist
10. **Which of the following drugs potentiates ADH action on the kidney?**
 - (a) Lithium
 - (b) Carbamazepine
 - (c) Demeclocycline
 - (d) Alcohol
1. **Which haematinic is primarily used in the treatment of megaloblastic anaemia due to vitamin B12 deficiency? (SSB 2023)**
 - (a) Folic acid
 - (b) Erythropoietin
 - (c) Cyanocobalamin
 - (d) Ferrous gluconate
2. **The storage form of Iron in the human body is (CCF 2014, ISRO 2021)**
 - (a) Ferritin
 - (b) Ferrous fumarate
 - (c) Heam
 - (d) Globulin
3. **A patient with Glucose 6 phosphate dehydrogenase deficiency if treated with Dapsone will develop (ISRO 2017, ISRO 2021)**
 - (a) Hemolytic anaemia
 - (b) Pernicious anaemia
 - (c) Diarrhoea
 - (d) None of these
4. **Which is NOT disease of erythrocytes (HPSSC 2020)**
 - (a) Leukemia
 - (b) Anaemia
 - (c) Thalassemia
 - (d) Polycythemia
5. **Phytomenadione is (KPSC 2019)**
 - (a) Niacin
 - (b) Vitamin K
 - (c) Pyridoxine
 - (d) Lipoic acid
6. **'Mouse anti-alopecia factor' is also known as (DSSSB 2019 P1)**
 - (a) Niacin
 - (b) Protogen
 - (c) Biotin
 - (d) Inositol
7. **Macrocytic anemia developed due to the deficiency of intrinsic factor is known as (DSSSB 2017)**
 - (a) Pernicious anemia
 - (b) Megaloblastic anemia
 - (c) Hypochromic anemia
 - (d) Sideroblastic anemia
8. **Hydroxocobalamin is used as an antidote for (MPESB 2017)**
 - (a) Cyanide
 - (b) Botulism
 - (c) Mercury
 - (d) Opiates
9. **Methotrexate should be given with which of the following to decrease its side effects (ISRO 2017)**
 - (a) Folic acid
 - (b) Cyanocobalamin
 - (c) Thiamine
 - (d) Folinic acid
10. **Which drug does NOT influence leucopoiesis (ESIC 2016)**
 - (a) Filgrastim
 - (b) Erythropoietin
 - (c) Doxorubicin
 - (d) Methotrexate
11. **Vitamin 'K' is associated with (NCL 2016)**
 - (a) Pellagra
 - (b) Haemoglobin concentration
 - (c) Nerves
 - (d) Blood clotting
12. **Deficiency of Copper causes (NCL 2016)**
 - (a) Night blindness
 - (b) Wilson's disease
 - (c) Cushing's disease
 - (d) Leukemia
13. **Inadequate intake of Folic acid can lead to (DSSSB 2015)**
 - (a) Aplastic anaemia
 - (b) Sickle cell anaemia
 - (c) Iron-deficiency anaemia
 - (d) Megaloblastic anaemia
14. **Drug which enhances sports performance (AIIMS 2012, RRB 2015)**
 - (a) Propranolol
 - (b) Erythropoietin
 - (c) Heparin
 - (d) Aspirin

Drugs Affecting Blood And Blood Formation

Haematinics and Erythropoietin

Introduction to Pharmacognosy

- Latin or English names of crude drugs are considered in which system of classification of drugs? (RRB 2025 S4)**
 - Morphological classification
 - Alphabetical classification
 - Chemical classification
 - Pharmacological classification
- Steam distillation is used to extract: (RRB 2025 S4)**
 - Volatile oils from plant materials
 - Non-volatile polymers
 - Inorganic salts
 - Insoluble solids
- The term “standardization” in herbal drug quality control refers to: (RRB 2025 S4)**
 - Consistent levels of marker compounds
 - Packaging specifications
 - Sterilization validation
 - Uniform particle size distribution
- The physical method of evaluation of crude drugs is: (RRB 2025 S4)**
 - Colour
 - Odour
 - Refractive Index
 - Shape
- The first pure alkaloid isolated from a natural source was: (RRB 2025 S4)**
 - Quinine
 - Morphine
 - Cocaine
 - Atropine
- Which of the following organisations is responsible for regulating the quality standards of herbal medicines in India? (DSSSB 2025 S1)**
 - WHO
 - AYUSH
 - ICH
 - FDA
- According to the Codex Alimentarius Commission, the maximum residue limit of pesticide is expressed which unit? (DSSSB 2025 S2)**
 - mg/kg
 - mg/g
 - mg/L
 - mg/ml
- Which of the following components is often included in biodynamic preparation enhance soil fertility? (DSSSB 2025 S3)**
 - Compost made from animal manure
 - Chemical fertilizers
 - Artificial soil additives
 - Synthetic growth hormones
- Palisade ratio is defined as the: (DSSSB 2025 S3)**
 - Number of palisade cells above each epidermal cell
 - Number of palisade cells beneath each epidermal cell
 - Average number of palisade cells beneath each epidermal cell
 - Number of palisade and epidermal cells
- What is the main challenge faced by the herbal industry in terms of standardization? (DSSSB 2025 S3)**
 - High cost of production
 - Limited herbal species
 - Insufficient market demand
 - Lack of quality control
- All of the following are advantages of organic farming, except: (DSSSB 2025 S3)**
 - It is free of poison
 - It provides better nutrition
 - It helps to stay healthy
 - It is expensive
- The organoleptic property related to taste and smell in herbs is primarily assessed for: (MHSRB-T 2024)**
 - Toxicity
 - Quality control
 - Cost analysis
 - Shelf life
- In adulteration of natural drugs, which of the following conditions refers to impairment in quality of the drug? (OSSSC 2024)**
 - Spoilage
 - Inferiority
 - Deterioration
 - Substitution
- According to microscopic evaluation, the average number of palisade ratio, beneath one epidermal cell using four continuous epidermal cells for the count known as (OSSSC 2024)**
 - Palisade ratio
 - Stomatal number
 - Vein inlet number
 - Stomatal index
- What is the term for the study of the physical, chemical, and biological properties of drugs obtained from natural sources (OSSC 2024)**
 - Pharmacology
 - Pharmacognosy
 - Pharmaceutics
 - Pharmacy
- What is the main role of the stomata in plant leaves (OSSC 2024)**
 - Water transport
 - Gas exchange
 - Nutrient absorption
 - Mechanical support
- The term “phytopharmaceuticals” refers to (OSSC 2024)**
 - Synthetic drugs
 - Herbal drugs
 - Microbial drugs
 - Biotechnologically produced drugs

4. Identify the active constituent of tannic acid (ITBP ASI 2023)
 (a) Chebulic acid
 (b) Vitamin C, phyllembin
 (c) Gallic acid and glucose
 (d) Ellagic acid and β -sitosterol
5. Catechu is used in medicine as (BFUHSMC 2022)
 (a) Antidiabetic (b) Anticancer
 (c) Antipyretic (d) Astringent
6. Goldbeater's skin test is used to detect the presence of _____ class of compounds (CGHS Nagpur 2018, AMC 2022)
 (a) Tannins (b) Steroids (c) Glycerides (d) Resins
7. Triphala and Chyavanprash contain (KPSC 2021)
 (a) Amla (b) Gokhru (c) Ajowan (d) Myrrh
8. Which bark drug is used as cardiotoxic (ESIC 2014, BSSC 2018, HPSSB 2020)
 (a) Ashoka (b) Cinnamon (c) Arjuna (d) Pterocarpus
9. The ethereal extract of Arjuna bark gives, colour fluorescence (HPSSC 2020)
 (a) Pink (b) Blue (c) Green (d) Red
10. In gambier fluorescent test _____ coloured fluorescence is observed in light petroleum ether layer (HPSSC 2020)
 (a) Red (b) Pink (c) Green (d) Orange
11. Give an example of Antidiabetic drug (KPSC 2020)
 (a) Picrorhiza (b) Pterocarpus
 (c) Punarnava (d) Ipecac
12. The plant constituents having an astringent taste are (HPSSB 2020)
 (a) Volatile oil (b) Carbohydrates
 (c) Tannins (d) Alkaloids
13. Chebulinic acid is one of the constituent of (DSSSB 2019)
 (a) Amla (b) Bahera (c) Wang (d) Myrobalan
14. The name of the Phlobaphene which is present in Pterocarpus marsupium is called as (MPESB 2017)
 (a) Kinoin (b) Kinotannic acid
 (c) K-Pyrocatechin (d) Leucocyanidin
15. Uncaria gambir belongs to the family
 (a) Rubiaceae (b) Combretaceae
 (c) Punicaceae (d) Rosaceae
16. Catechu is used in medicine as an
 (a) Antidiabetic (b) Anti-cancer
 (c) Antipyretic (d) Astringent
17. What are known as balsams
 (a) Resins dissolved in volatile oil
 (b) A mixture of volatile oils with sesquiterpenes
 (c) Solidified resin devoid of volatile terpenes
 (d) Polysaccharide mixed with volatile oil
18. Amla fruit rich in following minerals are
 (a) Iron, Calcium, Phosphorus
 (b) Iron, Potassium, Phosphorus
 (c) Iron, Potassium, Magnesium
 (d) Sulphur, Potassium, Magnesium
19. Which of the secondary metabolite of plant contain vitamin-c and phyllembin as chemical constituent
 (a) Goose berry (b) Kattha
 (c) Bahera (d) Pale catechu
20. Test use for detection of tannins
 (a) Goldbeater's skin test (b) Phenazone test
 (c) Gelatin test (d) All of the above

Carbohydrates

1. Agar-agar center makes an additive product obtained from: (OSSSC 2024)
 (a) Gelidium (b) Yeast
 (c) Paramecium (d) Amoeba
2. Honey is a rich source of: (OSSC 2024)
 (a) Curcumin (b) Phenytoin
 (c) Fructose (d) Albendazole
3. Aldobionic acid is the main constituent of (MRBTN 2023)
 (a) Acacia (b) Agar (c) Asafoetida (d) Ispaghula
4. What percent of moisture is present in gelatin? (DGHS 2023)
 (a) 0.7-0.9 percent (b) 7-10 percent
 (c) 17-20 percent (d) 70-80 percent
5. Ispaghula and sterculia prescribed in treatment of constipation act as (MPESB 2022)
 (a) Bulk-forming laxatives (b) Stimulant laxatives
 (c) Stool softeners (d) All of these
6. Major constituent of raw honey is (MC-ND 2022)
 (a) Glucose (b) Sucrose (c) Maltose (d) Fructose
7. The dried seeds of Plantago ovata is largely cultivated in (Delhi Pharmacist 2021)
 (a) Maharashtra, Karnataka, Andhra Pradesh and Tamil Nadu
 (b) Gujarat, Rajasthan, Punjab and Maharashtra
 (c) Madhya Pradesh, Maharashtra and Goa
 (d) Sikkim, West Bengal and Odisha
8. Bassorin is chemical constituent obtained from (Hamirpur Pharmacist 2021)
 (a) Guar (b) Lanolin
 (c) Tragacanth (d) Olive oil
9. Isabgol husk preparation factory is located in (HPSSB 2020)
 (a) Gujarat (b) Rajasthan
 (c) Andhra Pradesh (d) Tamil Nadu

Natural Pesticides, Antibiotics, & Allergenic Extracts

- Which of the following is used in the preparation of mosquito repellents? (MHSRB-T 2024)
(a) Pyrethrum (b) Shankapushpi
(c) Shatavari (d) Picrorhiza
- Chrysanthemum cinerariaefolium* is the botanical source of (MRBTN 2023)
(a) Shankpushpi (b) Shatavari
(c) Pyrethrum (d) Tobacco
- Which of the following is not a drug source from animals (MPESB 2023)
(a) Asbestos (b) Gelatin (c) Cod-liver (d) Beeswax
- Azadirachtin is the chemical constituent present in Neem act as (KPSC 2021)
(a) Anti-feedant (b) Insect repellent
(c) Antiviral (d) Anti-asthmatic
- Salanin, which possesses anti-feedant activity, is a phytoconstituent of Neem. The part of this plant which contains this constituent is (MPESB 2017)
(a) Bark (b) Leaf (c) Seed (d) Fruit
- Plant constituent used in preparation of mosquito coils (APCSCR 2015)
(a) Ergot (b) Ephedra (c) Aconite (d) Pyrethrum
- Which among the following is not a natural insecticide (KPSC 2015)
(a) *Chrysanthemum cinerariaefolium*
(b) *Nicotiana glauca*
(c) *Ryania speciosa*
(d) *Piper nigrum*
- The active insecticidal constituent of Derris root is:
(a) Azadirachtin (b) Rotenone
(c) Nicotine (d) Ryanodine
- Ryania, obtained from *Ryania speciosa*, contains:
(a) Rotenone (b) Sabadine
(c) Nicotine (d) Ryanodine
- Sabadilla seeds are obtained from:
(a) *Schoenocaulon officinale*
(b) *Chrysanthemum cinerariaefolium*
(c) *Derris elliptica*
(d) *Cymbopogon nardus*

ANSWER KEY

Introduction to Pharmacognosy

1-b	2-a	3-a	4-c	5-b	6-b	7-a	8-a	9-c	10-d
11-d	12-b	13-c	14-a	15-b	16-b	17-b	18-c	19-b	20-a
21-c	22-b	23-c	24-a	25-c	26-d	27-a	28-d	29-b	30-d
31-d	32-d	33-b	34-b	35-b	36-b	37-a	38-a	39-c	40-c
41-b	42-c	43-b	44-c	45-a	46-b	47-d	48-a	49-d	50-b
51-b	52-b	53-a	54-c	55-c	56-b	57-b	58-a	59-c	60-d
61-d	62-c	63-c	64-a	65-b	66-a	67-a	68-c	69-d	70-b
71-d	72-d	73-b	74-a	75-a	76-d	77-d	78-d	79-d	80-b

Traditional System of medicine & Ayurvedic Formulations

1-d	2-d	3-a	4-b	5-d	6-a	7-c	8-d	9-b	10-a
11-c	12-c	13-a	14-a	15-b	16-b	17-c	18-d	19-b	20-c

PHYSICAL CHEMISTRY

- Hess's Law states that: (RRB 2025 S4)**
 - Enthalpy is conserved in all reactions
 - Heat capacity determines reaction spontaneity
 - Enthalpy increases with temperature
 - The total enthalpy change depends only on initial and final states
- In an exothermic reaction, enthalpy is: (RRB 2025 S2)**
 - Both negative and positive
 - Zero
 - Only positive
 - Only negative
- The value of ΔG is negative for a thermodynamically _____ reaction. (DSSSB 2025 S1)**
 - Non-differed
 - Spontaneous
 - Non-spontaneous
 - Differed
- The expression that correlates the degree of dissociation of an electrolyte in dilution is known as (DSSSB 2025 S1)**
 - Henry's law
 - Ostwald's law
 - Boyle's law
 - Raoult's law
- For the equilibrium reaction $\text{PCl}_5 \rightleftharpoons \text{PCl}_3 + \text{Cl}_2$ at 500 K, the equilibrium concentrations are: $[\text{PCl}_5] = 1.41 \text{ M}$, $[\text{PCl}_3] = 1.59 \text{ M}$, $[\text{Cl}_2] = 1.59 \text{ M}$ What is the value of the equilibrium constant K_c ? (Raj. NHM 2025)**
 - 1.80
 - 1.00
 - 1.79
 - 2.00
- 1 Faraday is equivalent to _____ mole electrons. (DSSSB 2025 S2)**
 - 10
 - 9,650
 - 1
 - 96,500
- What known component is present in the solution in small quantities (MPESB 2023 P1)**
 - Solid
 - Solute
 - Solvent
 - Liquid
- When the concentration of an aqueous sodium chloride solution has the same colligative properties as the solution in question, the value so obtained is known as (AMC 2022)**
 - Normality
 - Isotonicity value
 - Molarity
 - Molality
- The boiling point of alcohol is 78 degrees Celsius, the corresponding temperature in degrees Fahrenheit is (MC-ND 2022)**
 - 100
 - 96
 - 156
 - 172
- In electrolytes, the sum of two transference numbers, t_+ and t_- is equal to (DSSSB 2021)**
 - 2
 - 0
 - 3
 - 1
- The law related to the study of gas solubilities is known as (DSSSB 2021)**
 - Henry's law
 - Ohm's law
 - Nernst's law
 - Faraday's law
- The measurement of equilibrium constant in charge transfer complexes was derived by (DSSSB 2021)**
 - Clausius
 - Benesi
 - Nernst
 - Debye
- Following statement is more accurate with respect to limitations of Arrhenius relationship for stability prediction (AMC 2021)**
 - Order of degradation will alter at higher temperature
 - Equal moisture concentrations will be mentioned at different temperatures
 - Less relative humidity and oxygen solubility at higher temperature
 - Same degradation mechanisms may predominate at different temperatures
- The principal product of corrosion on dezincification is (DSSSB 2021)**
 - Phosphorus
 - Antimony
 - Copper
 - Arsenic
- Which of the following has been investigated for possible use as anaesthetics, but the sparsity with which this element occurs in nature imposes severe limitations on any conjectured use (Delhi Pharmacist 2021)**
 - Caesium
 - Helium
 - Xenon
 - Rubidium
- In an _____ process, temperature is constant throughout the process (DSSSB 2019)**
 - Isothermic
 - Isobaric
 - Isotonic
 - Isochoric
- What is the symbol of the element Caesium (RRB 2019 P1)**
 - Cm
 - Cs
 - Ca
 - Cu
- The objects in motion on ground level possess energy. (Taking ground level as 0 potential) (RRB 2019 P2)**
 - Potential
 - Frictional
 - Kinetic
 - Gravitational
- Reduction in chemical reactions is the (RRB 2019 P2)**
 - Gain of oxygen
 - Loss of Hydrogen
 - Gain of Hydrogen
 - Gain of nitrogen
- Which of the following elements is a diatomic molecule (RRB 2019 P2)**
 - Argon
 - Chlorine
 - Phosphorous
 - Sulphur
- Which of the following typically has a low melting point (Raj. NHM 2014, RRB 2019 P1)**
 - Metals
 - Nonmetals
 - Metalloids
 - Transition metals

7. Example for a five membered heterocyclic compound with one hetero atom is (KPSC 2015)
 (a) Pyrimidine (b) Furan
 (c) Aziridine (d) Phenanthrene
8. An example of five members heterocyclic ring (Raj. NHM 2012)
 (a) Pyrimidine (b) Pyridine
 (c) Piperidine (d) Pyrrole
9. Which of the following are names of cyclic ether
 (a) Oxirane (b) Epoxy alkane
 (c) Alkene oxide (d) Carbinol
10. Which one of the following is heterocyclic compound
 (a) Pyrene (b) Thiophene
 (c) Phenol (d) Aniline

Different Classes of Organic Compounds

Alkane, Alkenes and Alkynes

1. What type of reaction occurs when alkanes react with oxygen? (RRB 2025 S2)
 (a) Addition (b) Substitution
 (c) Combustion (d) Elimination
2. Aniline reacts with aqueous bromine to form: (DSSSB 2025 S1)
 (a) 2,4,6 tribromoaniline (b) 2 bromoaniline
 (c) 4 bromo aniline (d) 3,5 dibromoaniline
3. The common name of 2,2-dimethylpropane is (DSSSB 2025 S2)
 (a) Pentane (b) Isobutane
 (c) Isopentane (d) Neopentane
4. Alkenes with more than 18 carbon atoms are physically (BTSC 2025)
 (a) Solids (b) Gases (c) Semisolids (d) Liquids
5. Halogenation of alkanes is an example of which type of reaction? (BTSC 2025)
 (a) Nucleophilic substitution (b) Radical substitution
 (c) Elimination (d) Electrophilic addition
6. Baeyer's Strain theory was proposed to establish the strain developed in (DSSSB 2025 S2)
 (a) Cycloalkanes (b) Ethers (c) Alkanes (d) Benzene
7. Which type of reaction is used to convert an alkane to an alkene (OSSC 2024)
 (a) Hydrolysis (b) Substitution
 (c) Elimination (d) Addition
8. What is the molecular formula of methane (OSSC 2024)
 (a) CH (b) CH₂ (c) CH₃ (d) CH₄
9. Find the alkene with maximum stability
 (a) cis-2-Butene (b) trans-2-Butene
 (c) 1-Butene (d) All have the same stability

10. Baeyer's reagent is used to detect
 (a) Glucose (b) Double bonds
 (c) Oxidation (d) Reduction

Carboxylic Acids

1. Esterification involves the reaction of a carboxylic acid with: (DSSSB 2025 S1)
 (a) Water (b) Alcohol (c) Ketone (d) Amine
2. Rochelle's salt is:
 (a) Sod. pot. Tartrate (b) Sodium tartrate
 (c) Potassium tartrate (d) Calcium tartrate
3. Maleic acid on catalytic reduction gives:
 (a) Oxalic acid (b) Malonic acid
 (c) Succinic acid (d) Tartaric acid
4. The question from the image is: "The common name of pentanoic acid is:"
 (a) Pivalic acid (b) Valeric acid
 (c) Lauric acid (d) Stearic acid
5. The question from the image is: "Which of the following is tricarboxylic acid?"
 (a) Propionic acid (b) Oxalic acid
 (c) Malonia acid (d) Citric acid

Alcohols, Phenols & Ethers

1. Alcohol can be prepared using alkenes through: (DSSSB 2025 S1)
 (a) Hydroboration-oxidation reaction
 (b) Grignard reaction
 (c) Sandmeyer reaction
 (d) Aldol condensation
2. The ___ is used for distinguishing whether the alcohol is primary, secondary or tertiary. (DSSSB 2025 S2)
 (a) Wagner's test (b) Fehling's test
 (c) Lucas test (d) Zak's test
3. Liquefied phenol contains (MRBTN 2023)
 (a) 80% w/w phenol and water
 (b) 99% w/w phenol and water
 (c) 50% w/w phenol and water
 (d) 10% w/w phenol and water
4. Dehydration of alcohols lead to the formation of (SECL 2013)
 (a) Alcohol (b) Ester (c) Ether (d) Aldehyde
5. The question from the image is: "Lucas reagent is"
 (a) Anhydrous CuCl₂ / HCl
 (b) Anhydrous ZnCl₂ / HCl
 (c) Anhydrous CuCl₂ / H₂SO₄
 (d) Anhydrous ZnCl₂ / H₂SO₄

22. A chromatographic technique which is particularly applicable to separate high molecular weight species is called (DSSSB 2019)
- Thin-layer chromatography
 - Column chromatography
 - High-performance thin-layer chromatography
 - Size-exclusion chromatography
23. Size-exclusion chromatography is also called (CG Vyapam 2016)
- Gel filtration chromatography
 - Ion-exchange chromatography
 - Ion-pair chromatography
 - Gas-liquid chromatography
24. The sulfonic acid resin is (CG Vyapam 2016)
- A weakly acidic, cation exchanger
 - A strongly basic, anion exchanger
 - A strongly acidic, cation exchanger
 - A cation exchanger
25. Which of the following material is not used in the stationary phase of size exclusion chromatography (Raj. NHM 2011, 2012)
- Dextran
 - Agarose
 - Polyacrylamide
 - Polyvinyl Alcohol
7. Which of the following wavelength ranges is associated with UV spectroscopy (BPKMC 2014)
- 0.8-500 μm
 - 400-700 μm
 - 380-750 μm
 - 0.01-10 μm
8. Select the correct pair (Raj. NHM 2014)
- | | |
|----------------------|---------------------|
| Radiation – | Wavelength |
| P. Visible radiation | [I] 200 to 400 nm |
| Q. Near UV | [II] 2.5 to 50 m |
| R. Middle IR | [III] 0.75 to 2.2 m |
| S. Near IR | [IV] 400 to 750 nm |
- Options:
- P-IV, Q-I, R-II, S-III
 - P-II, Q-I, R-IV, S-V
 - P-II, Q-I, R-IV, S-I
 - P-I, Q-II, R-III, S-IV
9. The ultraviolet region of the spectrum used in drug analysis (BPKMC 2014, Raj. NHM 2012)
- 50-200 nm
 - 200-400 nm
 - 200-750 nm
 - 400-600 nm
10. Wave number is the number of waves
- Per second
 - Per centimeter
 - Per inch
 - Per centimeter³

UV Visible Spectroscopy

Spectroscopy

Introduction

1. Which one is the unit of wave number (ISRO 2021)
- Kaiser
 - Hertz
 - ms^{-1}
 - cps
2. The band of the coloured components of a light beam is called its only (RRB 2019)
- Accommodation
 - Colour band
 - Spectrum
 - Range
3. Absorption of radiation can be measured by using (RRB 2019)
- Flame Photometry
 - Voltammetry
 - Spectrophotometry
 - Polarimetry
4. A type of electromagnetic radiation used in Electron Spin Resonance (ESR) spectroscopy is (DSSSB 2019)
- Microwave
 - Ultraviolet radiation
 - Infrared radiation
 - Radio wave
5. An ideal sun screening agent should absorb electromagnetic radiations in the range of (RRB 2019)
- 100–150 nm
 - 290–320 nm
 - 400–450 nm
 - 490–520 nm
6. What is the SI unit of Wavelength (Raj. NHM 2014, RRB 2019)
- Hertz
 - Metre
 - Decibels
 - Second
11. Shift in Lambda (λ) max towards longer wavelength in UV visible spectroscopy is (RRB 2019)
- Hypsochromic shift
 - Hyperchromic shift
 - Bathochromic shift
 - Hypochromic shift
12. The light absorption in UV region produces change in the (RRB 2019)
- The vibrational energy of the molecule
 - The electronic energy of the molecule
 - The rotational energy of the molecule
 - All of these
13. In instrumental analytical techniques, fused silica is used as (DSSSB 2019)
- Monochromator
 - Attenuator
 - Detectors
 - Radiation source
14. Photometer is used to measure (BSSC 2018)
- Intensity of earthquakes
 - Intensity of sunlight
 - Wind velocity
 - Rainfall
15. Hypsochromic shift is also called as (Raj. NHM 2014)
- Yellow shift
 - Blue shift
 - Red shift
 - Violet shift
16. Bathochromic shift is also called as (Raj. NHM 2014)
- Yellow shift
 - Blue shift
 - Red Shift
 - Green shift
17. If analytical work has to be carried out in UV region, cuvette must be made up of (Raj. NHM 2014)
- Gelatin
 - Steel
 - Plastic
 - Quartz

7. Which one of these antineoplastic drugs contain platinum (Raj. NHM 2012)
 (a) Nitrogen mustard (b) Cisplatin
 (c) Busulfan (d) Daunorubicin
8. Chlorambucil is derivative of
 (a) Amino phenyl butyric acid
 (b) Amino phenyl caproic acid
 (c) Amino phenyl glycine
 (d) Diamino diphenyl
9. Melphalan is generally _____ analog
 (a) Pyrrole (b) Pyridine
 (c) Phenylalanine (d) Pyrazine
10. Which type of ring is present in the thiotepa
 (a) Indole ring (b) Benzene ring
 (c) Tri aziridine (d) None of the above

ANSWER KEY

PHYSICAL CHEMISTRY

1-d	2-d	3-b	4-b	5-c	6-c	7-b	8-b	9-d	10-d
11-a	12-b	13-c	14-c	15-c	16-a	17-b	18-c	19-c	20-b
21-b	22-b	23-d	24-a	25-c	26-d	27-c	28-b	29-a	30-c
31-c	32-a	33-b	34-b	35-d	36-b	37-c	38-c	39-c	40-a

ORGANIC CHEMISTRY

Classification & IUPAC Nomenclature

1-c	2-b	3-c	4-d	5-c	6-b	7-d	8-c	9-b	10-a
11-a	12-d	13-b	14-d	15-d					

General Organic Chemistry

1-a	2-a	3-d	4-a	5-a	6-a	7-d	8-b	9-b	10-b
11-b	12-b	13-c	14-a	15-b	16-d	17-b	18-a	19-a	20-b

Isomerism

1-b	2-b	3-a	4-c	5-d	6-b	7-d	8-d	9-a	10-a
11-c	12-a	13-b	14-d	15-b	16-a	17-d	18-a	19-a	20-b

Aromatic Compounds

1-a	2-a	3-c	4-d	5-a	6-c	7-a	8-c	9-d	10-b
11-c	12-d	13-d	14-b	15-a	16-b	17-c	18-a	19-a	20-d

Heterocyclic Compounds

1-a	2-d	3-c	4-d	5-b	6-d	7-b	8-d	9-a	10-b
-----	-----	-----	-----	-----	-----	-----	-----	-----	------

Carbohydrates

- Which of the following organs is/are affected by Von Gierke disease?(DSSSB 2025 S2)**
(a) All organs (b) Liver and kidney
(c) Spleen (d) Eyes
- Which of the following is a disaccharide having two glucose unit? (DSSSB 2025 S3)**
(a) Fructose (b) Maltose
(c) Dextrose (d) Mannose
- Sucrose is an example of: (DSSSB 2025 S3)**
(a) Polysaccharide (b) Monosaccharide
(c) Aldose (d) Disaccharide
- _____ is a glucose polymer formed by bacteria and linked by a 1→6 instead of the typical 1→4 bond. (HSSC 2024)**
(a) Dextran (b) Gelatin colloids
(c) Hirudin (d) Ticlopidine
- The amount of energy released by oxidation in the body is called: (KSSSCI 2024)**
(a) Basal metabolic rate (b) Caloric value
(c) Physiological fuel value (d) Metabolic rate
- Insulin causes all of the following; Except: (KSSSCI 2024)**
(a) Glycogenesis (b) Glycolysis
(c) Lipogenesis (d) Ketogenesis
- Which of the following is not related to glycogen storage? (MHSRB-T 2024)**
(a) Cori's disease (b) Pompe's disease
(c) Krabbe disease (d) Von Gierke's disease
- What is the main storage polysaccharide of animal cells? (OSSSC 2024)**
(a) Chitin (b) Cellulose (c) Dextrin (d) Glycogen
- Which of the following is/are characteristic of Mono-saccharides?(AIIMS Patna 2023)**
 - They usually contain a 3-6 carbon atom chain with an aldehyde or a ketone group
 - They are highly soluble in water due to the presence of polar hydroxyl groups
 - They have high solubility in nonpolar solvents

(a) 1 and 2 only (b) 2 and 3 only
(c) All 1, 2 and 3 (d) Only 2
- Gluconeogenesis predominantly takes place in of (MRBTN 2023)**
(a) Liver (b) Brain
(c) Skeletal muscle (d) Adipose tissue
- Glycolysis, the first step in cellular respiration, occurs in which part of the cell? (SSB ASI 2023)**
(a) Mitochondria (b) Cytoplasm
(c) Ribosomes (d) Nucleus
- The molecules of erythrose contain: (ITBP ASI 2023)**
(a) 3 carbon atoms (b) 2 carbon atoms
(c) 5 carbon atoms (d) 4 carbon atoms
- Which of the following is an example of Hetero-poly-saccharides? (ITBP ASI 2023)**
(a) Hyaluronic acid (b) Starch
(c) Cellulose (d) Glycogen
- Which of the following disaccharides have 20-D-glucose structure? (ITBP ASI 2023)**
(a) Cellobiose (b) Sucrose
(c) Isomaltose (d) Maltose
- What is Inverted sugar (MPESB 2023)**
(a) Hydrolytic product of sucrose (b) Galactose
(c) Fructose (d) Mannose
- What is the Cori cycle (MPESB 2023)**
(a) Synthesis of glucose
(b) Uptake of glucose
(c) Reuse of glucose and synthesis of glucose
(d) Reuse of glucose
- Which sugar gives a positive selivanoff's test (CGHS Bangalore 2019, HPSSC 2022)**
(a) Glucose (b) Fructose (c) Lactose (d) Maltose
- Hexokinase enzyme require metal ions for activity (HPSSC 2022)**
(a) Mn^{2+} (b) Mg^{2+} (c) K^{+} (d) Cu^{2+}
- The number of ATP produced when a molecule of acetyl CoA is oxidised through citric acid cycle is (MPESB 2022)**
(a) 12 (b) 24 (c) 38 (d) 15
- Pentose sugar gives which test positive (HPSSC 2022)**
(a) Inversion test (b) Mucic acid test
(c) Full saturation test (d) Bial's test
- A monosaccharide is (HPSSC 2022)**
(a) Lactose (b) Sucrose (c) Ribose (d) Maltose
- Number of asymmetric carbon atoms in glucose is (HPSSC 2022)**
(a) 1 (b) 2 (c) 3 (d) 4

24. Gout is the disorder of (Raj. NHM 2012)
 (a) Protein metabolism (b) Pyrimidine metabolism
 (c) Oxalate metabolism (d) Purine metabolism
25. During protein synthesis the amino acid sequence is specified by (Raj. NHM 2012)
 (a) Ribosomal RNA (b) Transfer RNA
 (c) Messenger RNA (d) Soluble RNA

Enzymes

- Which component of an enzyme is directly involved in substrate binding? (RRB 2025 S4)
 (a) Cofactor (b) Regulatory site
 (c) Active site (d) Allosteric site
- Feedback inhibition is also termed as: (RRB 2025 S2)
 (a) Latent enzyme activation
 (b) Compartmentation
 (c) Initial product inhibition
 (d) End product inhibition
- Who proposed the lock and key model of Enzyme? (Raj. NHM 2025)
 (a) Alfred Nobel (b) Koshland
 (c) Emil Fischer (d) Alice Ball
- A complete, catalytically active enzyme together with its bound coenzyme and/or metal ions is called a: (OSSSC 2024)
 (a) Apoenzyme (b) Holoenzyme
 (c) Cofactor (d) Hapten
- Which of the following enzymes is an example of oxidoreductase enzyme: (MPPGCL 2024)
 (a) Phosphorylase (b) Lipase
 (c) Alcohol dehydrogenase (d) Choline esterase
- What is the optimum temperature of most enzymes? (AIIMS Patna 2023)
 (a) 47 degree celsius (b) 37 degree celsius
 (c) 67 degree celsius (d) 57 degree celsius
- Which of the following statements is/are correct about the features of enzyme? (AIIMS Patna 2023)
 1. Conjugated enzymes consist entirely of amino acids
 2. The complete biologically active conjugated enzyme is called Holoenzyme
 (a) Both 1 and 2 (b) Only 1
 (c) Neither 1 nor 2 (d) Only 2
- Enzymes are _____ in nature (MRBTN 2023)
 (a) Fats (b) Nucleic acids
 (c) Proteins (d) Carbohydrates
- As the concentration of the enzyme is increased the velocity of the reaction proportionally (MRBTN 2023)
 (a) Increases (b) Decreases
 (c) Remains (d) Attains zero
- An enzyme that adds a phosphate group to a substrate is known as a: (SSB ASI 2023)
 (a) Kinase (b) Ligase (c) Isomerase (d) Hydrolase
- Enzyme kinetics are often studied using the Michaelis-Menten equation. What does the Michaelis constant (Km) indicate? (SSB ASI 2023)
 (a) The time it takes for the reaction to reach its maximum rate
 (b) The enzyme's maximum reaction rate
 (c) The total concentration of the enzyme in the reaction
 (d) The substrate concentration at which the reaction rate is half of its maximum
- Which enzymes catalyze intramolecular rearrangements e.g., the interconversion of aldose and ketone sugars? (ITBP ASI 2023)
 (a) Transferases (b) Hydrolases
 (c) Isomerases (d) Lyases
- Which enzyme catalyses the bioactivation of nitroglycerin into NO (MPSC 2023)
 (a) Tyrosine kinase (b) Aldehyde dehydrogenase
 (c) Glycerol kinase (d) Glycerol dehydrogenase
- A term which describes a cofactor that is finally bound to an enzyme (AMC 2022)
 (a) Holoenzyme (b) Prosthetic
 (c) Coenzyme (d) Transferase
- The serum enzyme used to evaluate pancreatic function is (MPESB 2022)
 (a) Alkaline phosphatase (b) Amylase
 (c) Aspartate transaminase (d) Lactate dehydrogenase
- Enzymes involved in aging process is (MPESB 2022)
 (a) Catalase (b) Superoxide dismutase
 (c) Metalloproteinase (d) Telomerase
- Identify the group of enzymes that utilize NADP or NAD as coenzymes and catalyze biochemical reactions by the transfer of electrons from one molecule to another (BFUHSMC 2022)
 (a) Isomerases (b) Oxidoreductases
 (c) Transferases (d) Ligases
- Mark the CORRECT relationship (Delhi Pharmacist 2021)
 (a) Kuhne-proposed the term Enzyme-1877
 (b) Lipmann - Role of ATP in biological system. 1920
 (c) Neuberger - Chemical pathway for fermentation-1920
 (d) Meselson and Stahl discovered DNA polymerase-1958
- Which of the following is CORRECT in relationship shown as Enzyme: Substrate: Inhibitor (Delhi Pharmacist 2021)
 (a) Xanthine oxidase: Hypoxanthine: Dicumarol
 (b) Acetylcholine esterase: Catecholamines: Ephedrine
 (c) HMG CoA reductase: Vitamin: Lovastatin
 (d) Monoamine oxidase: Catecholamine: Ephedrine

22. **Bile salts can be identified by (Raj. NHM 2012)**
 (a) Fouchet's test (b) Hay's test
 (c) Gmelin's test (d) Benzidine test
23. **Which of the following tests is based on the excretory function of the liver?**
 (a) Serum bilirubin (b) Serum albumin
 (c) Prothrombin time (d) Galactose tolerance test
24. **Normal serum bilirubin concentration is:**
 (a) < 0.5 mg/dl (b) < 1 mg/dl
 (c) < 2 mg/dl (d) < 5 mg/dl
25. **Which type of bilirubin gives a direct positive van den Bergh reaction?**
 (a) Conjugated bilirubin
 (b) Unconjugated bilirubin
 (c) Both conjugated and unconjugated bilirubin
 (d) None of the above
26. **Both conjugated and unconjugated bilirubin are increased in:**
 (a) Obstructive jaundice (b) Hemolytic jaundice
 (c) Hepatic jaundice (d) Physiological jaundice
27. **Urine concentration test in renal damage shows:**
 (a) Increase in specific gravity and osmolality
 (b) Decrease in osmolality and specific gravity
 (c) No change in osmolality
 (d) Only rise in pH
28. **Pentagastrin stimulation test is used to evaluate:**
 (a) Pancreatic function (b) Liver function
 (c) Renal clearance (d) Gastric acid secretion
29. **Serum amylase and lipase are elevated in:**
 (a) Obstructive jaundice (b) Acute pancreatitis
 (c) Hepatitis (d) Gastritis
30. **Which method of blood glucose estimation is based on the reduction of alkaline copper by glucose?**
 (a) O-Toluidine method
 (b) Folin Wu method
 (c) Anthrone method
 (d) Enzymatic GOD-POD method
1. **Which of the following abnormal constituents of urine may suggest a urinary tract infection? (MHSRB-T 2024)**
 (a) Glucose (b) Ketones (c) Pus cells (d) Uric acid
2. **Urine specimen is collected for the diagnosis of (OS-SSC 2024)**
 (a) Intestinal infections
 (b) Urinary tract infections
 (c) Observation of malarial parasite
 (d) Tuberculosis
3. **When faeces specimen is collected in the laboratory for examination, then it should be cultured within (OSSSC 2024)**
 (a) 2 hours (b) 4 hours (c) 6 hours (d) 8 hours
4. **What can a urine test show in an undiagnosed diabetic (MPESB 2023)**
 (a) Ketones
 (b) Glucose and high amounts of bilirubin
 (c) Ketones and adrenaline
 (d) Glucose and ketones
5. **Urine specific gravity of 1.054 indicates (HPSSB 2020)**
 (a) Excellent renal function
 (b) Inappropriate secretion of ADH
 (c) Extreme dehydration
 (d) Presence of glucose or protein
6. **The normal urine output in adult is (RRB 2019)**
 (a) 500-800 ml/day (b) 800-2000 ml/day
 (c) 2-3 litre/day (d) 3-4 litre/day
7. **A test which measures the ability of a compound to diminish the concentration of sugar in the blood is (RRB 2019)**
 (a) Hypoglycemic test (b) Liver function test
 (c) Hyperglycemic test (d) Glucose tolerance test
8. **Bence Jones Proteins found in urine occur in (KPSC 2015)**
 (a) Liver diseases (b) Diabetes mellitus
 (c) Multiple myeloma (d) Thalassemia
9. **Normal urine (NTPC 2013)**
 (a) Neutral (b) Highly acidic
 (c) Slightly acidic (d) Highly alkaline
10. **A normal value for glucose in blood is (SECL 2013)**
 (a) 250-350 mg/dl (b) 160-180 mg/dl
 (c) 100-200 mg/dl (d) 100-120 mg/dl

Pathology of Blood and Urine

ANSWER KEY

Carbohydrates

1-b	2-b	3-d	4-a	5-c	6-d	7-c	8-d	9-a	10-a
11-b	12-d	13-a	14-a	15-c	16-b	17-b	18-a	19-d	20-c
21-c	22-d	23-c	24-a	25-a	26-a	27-d	28-c	29-b	30-a

Introduction to Social Pharmacy & Concept of Health

- In mortality indicators, death rate is defined as number of deaths per _____ number populations per year in a given community. (DSSSB 2025 S3)**
(a) 100 (b) 1,00,000 (c) 10,000 (d) 1000
- Which of the following is NOT an indicator of health (MPPGCL 2024)**
(a) Disability rate (b) Mortality
(c) Environment (d) Morbidity
- In the context of measurement of fertility in humans, what is the formula to calculate crude birth rate? (AIIMS Raipur 2023)**
(a) Number of live births during the year / Estimated mid-year population
(b) Number of live births during the year \times Estimated mid-year population
(c) Number of live births during the year \div Estimated mid-year population \times 1000
(d) Estimated mid-year population / Number of live births during the year
- Which of the following is NOT included in the dimension of holistic health (MPESB 2023)**
(a) Mental (b) Finance (c) Physical (d) Spiritual
- Which concept specifically defines a bacterium as the cause of a disease (MPESB 2023)**
(a) Holistic concept (b) Ecological concept
(c) Biomedical concept (d) Psychosocial concept
- Which concept describes the harmonious balance between the healthy body and the environment (MPESB 2023)**
(a) Biomedical concept (b) Psychosocial concept
(c) Holistic concept (d) Ecological concept
- Population begins to decline as birth rate is lower than death rate in what stage of Demographic Cycle (MPESB 2023)**
(a) First stage (high stationary stage)
(b) Fifth stage (Declining stage)
(c) Second stage (Early expanding stage)
(d) Third stage (Late expanding stage)
- Physical health refers to (MP Pharmacist 2020)**
(a) Individual's constitutional health
(b) Mind of the individual
(c) Overall integrated development of society culture, economic, educational, social and political
(d) The spirit or soul
- Physical health means (MP Pharmacist 2020)**
(a) Good looking
(b) Neat and clean
(c) Sociable
(d) Normal functioning of body and organs
- Contamination of which of the following causes Giardia (MP Pharmacist 2020)**
(a) Water (b) Chemical (c) Food (d) Air
- What is AYUSH (RRB 2019)**
(a) Ayurveda, Yoga, Unani Siddha and Homeopathy
(b) Ayurveds, Yoga, Unani, Siddha and Herbal
(c) Ayurveda, Unani, Siddha and Homeopathy
(d) Allopathy Unani, Siddha and Homeopathy
- What is the full form of CNG in controlling vehicular air pollution (RRB 2019)**
(a) Combined Natural Gas (b) Compressed Natural Gas
(c) Common Natural Gas (d) Combined Nitrogen Gas
- Any undesirable change in the physical chemical or biological features of air, land and water is called (RRB 2019)**
(a) Ecology (b) Pollutants
(c) Pollution (d) Ecosystem
- Which programme is NOT integrated under (NHP 2017)?**
(a) RMNCH + A services
(b) Universal immunization
(c) Control of tuberculosis and leprosy
(d) Green revolution programme
- Millennium Development Goals (MDGs) were adopted in the year:**
(a) 1990 (b) 2000 (c) 2005 (d) 2015
- How many Sustainable Development Goals (SDGs) were adopted by the UN?**
(a) 8 (b) 12 (c) 15 (d) 17
- Which of the following is NOT included in SDGs?**
(a) End poverty in all forms
(b) Combat HIV/AIDS, malaria and other diseases
(c) Ensure sustainable consumption and production
(d) Conserve and sustainably use oceans
- Mental health is best defined as:**
(a) Harmony between individual and environment
(b) Ability to run 10 km without fatigue

Intestinal Infections

- Which of the statement is not true for Typhoid (OSSC 2024)**
 - It is caused by contaminated water and food
 - It is caused by Salmonella typhi
 - It is not treatable
 - High fever is one of the symptoms
- Hepatitis 'B' is also called (MRBTN 2023)**
 - Infectious hepatitis
 - Delta hepatitis
 - Serum hepatitis
 - Infectious and delta hepatitis
- Hepatitis is a (BFUHSMC 2022)**
 - Bacterial infection
 - Protozoal infection
 - Fungal infection
 - Viral infection
- Typhoid is caused by (Hamirpur Pharmacist 2021)**
 - Xanthomonas typhosus
 - Bacillus dysenteriae
 - Salmonella typhi
 - Bacillus diplococcus
- HBsAg testing is done to detect the presence of (KPSC 2020)**
 - Hepatitis A virus
 - Chicken pox virus
 - Hepatitis B virus
 - Hepatitis C virus
- Causative organism for typhoid fever is (MP Pharmacist 2020)**
 - Fungi
 - RNA Virus
 - Clostridium
 - Salmonella typhi
- Which of the following is an infectious viral disease of the human alimentary canal that affects the central nervous system (DSSSB 2019)**
 - Cholera
 - Typhoid
 - Hepatitis
 - Poliomyelitis
- Which of the following diseases is spread through the fecal-oral route (BSSC 2018)**
 - Hepatitis A
 - Hepatitis B
 - Hepatitis C
 - Hepatitis D
- What is the dose of Hepatitis B Vaccine for children below 10 years (CGHS Delhi 2018)**
 - 2 ml
 - 1 ml
 - 0.5 ml
 - 1.5 ml
- Oral vaccine (Raj. NHM 2016)**
 - Hepatitis-A
 - Hepatitis-B
 - Salk's vaccine
 - Sabin's vaccine
- Infected blood products may produce serum down by hepatitis due to the presence of (Raj. NHM 2012, RRB 2016)**
 - Hepatitis A Virus
 - Hepatitis B Virus
 - Hepatitis C Virus
 - None of these
- Which of the following is called serum Hepatitis (RRB 2015)**
 - HCV
 - HAV
 - HBV
 - HIV
- Which of the following are intestinal infections (Raj. NHM 2012)**
 - Poliomyelitis
 - Hepatitis
 - Cholera
 - All of these
- Water borne disease is (Raj. NHM 2012)**
 - Tuberculosis
 - Cholera
 - Measles
 - Influenza
- Polio is caused by (AIIMS 2012)**
 - Bacteria
 - Viral
 - Both (a) and (b)
 - None of these

Arthropod-borne Infections

- Q fever and trench fever are: (DSSSB 2025 S1)**
 - spirochaetal diseases
 - bacterial diseases
 - rickettsial diseases
 - fungal diseases
- The arthropod which spreads malaria is (MPPGCL 2024)**
 - Rat flea
 - Itch mite
 - Mosquito
 - Housefly
- Which mosquito species is the primary vector for transmitting the malaria parasite to humans? (OSSC 2024)**
 - Aedes mosquito
 - Anopheles mosquito
 - Culex mosquito
 - Toxorhynchites mosquito
- Which of the given disease is not caused by fungi? (AIIMS Patna 2023)**
 - Ringworm
 - Dhobi itch
 - Athlete's foot
 - Filariasis
- Which of the following disease is not caused by Rickettsiae? (AIIMS Patna 2023)**
 - Q-fever
 - Trench fever
 - Typhus
 - Kala azar
- In India, filariasis is transmitted by (Hamirpur Pharmacist 2021)**
 - Culex fatiseas
 - Aedes aegypti
 - Anopheles culicifacies
 - Musca domestics
- Following is NOT a clinical feature of malaria (Hamirpur Pharmacist 2021)**
 - Chills and rigors
 - Myalgia
 - Anorexia
 - Cough
- Which of the following is an airborne disease (DSSSB 2021)**
 - Typhoid
 - Cholera
 - Tuberculosis
 - Amoebiasis
- Which one of the following diseases is NOT fomite borne (MP Pharmacist 2020)**
 - Diphtheria
 - Typhoid
 - Malaria
 - Bacillary dysentery
- The growth in arthropods goes along with this process (MP Pharmacist 2020)**
 - Mitosis
 - Only molting
 - Only ecdysis
 - Ecdysis and molting

National Health Programs in India

1. Match column I of nutritional programmes with their objectives in column II: (Raj. NHM 2025)

Column-I (Programme)	Column-II (Objectives)
1. Vitamin A prophylaxis programme	a. Distribution of Iron and folic Acid tablets
2. Prophylaxis programme against nutritional anemia	b. Control of Blindness
3. National Goitre Control Programme	c. Provides food supplements to children
4. Balwadi nutritional Programme	d. Control of Iodine deficiency

Choose the most appropriate option from below:

- (a) 1-a, 2-b, 3-c, 4-d (b) 1-b, 2-c, 3-d, 4-a
 (c) 1-b, 2-a, 3-d, 4-c (d) 1-c, 2-d, 3-b, 4-a

2. The _____ programme provides _____ support to pregnant woman, lactating mother, pre-school children and adolescent girl. (Raj. NHM 2025)

- (a) Special Nutrition mental
 (b) ICDS, Nutritional
 (c) Balwadi nutrition, moral
 (d) Mid-day meal, financial

3. Which is not a milestone of the National AIDS Control Programme-(NACP-I) activities? (Raj. NHM 2025)

- (a) To slow down the spread of HIV infection.
 (b) To focusing on behaviour change, increased decentralization and NGO involvement.
 (c) To National AIDS control Board constituted.
 (d) NACO set up.

4. Which one is not true about Janani Shishu Suraksha Karyakram (JSSK)? (Raj. NHM 2025)

- (a) Free and no expense delivery in public health institutes.
 (b) Free drugs and consumables.
 (c) Free referral transport from home to institution and drop back home.
 (d) Free treatment of sick infant upto 6 months.

5. NACO has branded the STI/RTI services as- (Raj. NHM 2025)

- (a) Family planning clinic (b) Suraksha clinic
 (c) Under Five clinic (d) ICTC, clinic

6. "Mission Indradhanush" is associated with - (Raj. NHM 2025)

- (a) Family planning (b) Newborn resuscitation
 (c) Immunization (d) Health education

7. The main objective of NIDDCP is:

- (a) Eradication of malaria
 (b) Control of iodine deficiency disorders through iodized salt
 (c) Control of blindness
 (d) Tuberculosis elimination

8. Which of the following is an objective of National Programme for Control of Blindness and Visual impairment (NPCBVI)?

- (a) Reduce prevalence of diabetes
 (b) Reduce backlog of avoidable blindness
 (c) Reduce iodine deficiency
 (d) Reduce infant mortality

9. Nutritional support to TB patients is provided under RNTCP through:

- (a) ICDS programme
 (b) PDS subsidy
 (c) Mid-day meal scheme
 (d) Direct Benefit Transfer (DBT) mode

10. The TB Corpus Fund established under RNTCP is called:

- (a) Bharat Kshay Niyantaran Pratishthan
 (b) Bharat Swasthya Niyantaran Pratishthan
 (c) Bharat TB Relief Mission
 (d) Swachh Bharat TB Kosh

ANSWER KEY

Introduction to Social Pharmacy & Concept of Health

1-d	2-c	3-c	4-b	5-c	6-d	7-b	8-a	9-d	10-a
11-a	12-b	13-c	14-d	15-b	16-d	17-b	18-a	19-b	20-d

Responsibilities of community pharmacists, GPP & SOPs

1. Which evaluation method is typically used to assess a pharmacist's performance by gathering feedback from various sources, including supervisors, peers, and patients? (OSSSC 2024)
(a) Self-Assessment (b) 360-Degree Feedback
(c) Peer Review (d) Objective-Based Assessment
2. Which of the following are duties of a Clinical Pharmacist? (Raj. NHM 2025)
 1. Provide patient care to optimize medication use and promote health.
 2. Evaluate all Medicare coverage requirement requests.
 3. Ensure compliance with all clinical procedures.
 4. Perform surgical procedures.Choose the most appropriate option from below:
(a) 1 and 2 only (b) 1, 2 and 3 only
(c) 2, 3 and 4 only (d) All of these
3. Which of the following is NOT a primary role of a pharmacist in a community pharmacy setting? (OSSC 2024)
(a) Dispensing prescription medications
(b) Providing medical diagnoses
(c) Counseling patients on medication use
(d) Monitoring for drug interactions
4. The primary responsibility of a community pharmacist while dispensing prescriptions is:
(a) To sell maximum medicines
(b) To check dosage, label properly, and counsel patient
(c) To replace branded drugs with generics without advice
(d) To only record prescriptions
5. Before dispensing medication, a pharmacist should always:
(a) Take the patient's medication history
(b) Ask for the doctor's qualification
(c) Check the patient's financial status
(d) Avoid checking records
6. Patient counselling by a community pharmacist includes:
(a) Teaching use of medicines and side effect management
(b) Advising only about cost of medicines
(c) Avoiding discussion of adverse reactions
(d) Selling more products for profit
7. One of the WHO recommendations under GPP is:
(a) Pharmacist must avoid physician interactions
(b) Pharmacist must provide and maintain patient medication profile
(c) Pharmacists should compete with each other
(d) Pharmacist should not update their knowledge
8. GPP addresses all except:
(a) Promoting good health
(b) Rational medicine use
(c) Self-care support
(d) Manufacturing of medicines
9. A main objective of SOPs is:
(a) To increase workload
(b) To ensure efficiency, quality output, and regulatory compliance
(c) To replace pharmacists with machines
(d) To avoid documentation
10. Which of the following is NOT an ideal quality of SOP?
(a) Short but comprehensive
(b) Precise and professional
(c) Written in informal language
(d) Easy to read and validated

Prescription and prescription handling

1. What is the main advantage of computerizing hospital record-keeping? (BTSC 2025)
(a) Minimises staff
(b) Enhances data retrievability and reduces waiting time
(c) Increases physical storage space
(d) Reduces electricity usage
2. Which part of the prescription contains the name and quantities of the prescribed ingredients?
(a) Inscription (b) Superscription
(c) Subscription (d) Signatura
3. Directions to the pharmacist regarding dosage form and number of doses appear in:
(a) Superscription (b) Subscription
(c) Signatura (d) Renewal instruction
4. For children under 12 years, prescription must always specify:
(a) Sex (b) Age
(c) School name (d) Parent's signature

- (c) Easy identification
(d) Complicated specification of the item
38. The method in which a code is assigned to stored items for easy identification is called (KPSC 2020)
(a) Block method (b) Mnemonic method
(c) Combination method (d) Alphanumeric method
39. The tenders which are called by advertisement are known as (HPSSB 2020)
(a) Open tenders (b) Limited tenders
(c) Simple tenders (d) Oral tenders
40. Materials purchased are issued strictly in chronological order. This practice is called the (DSSSB 2019)
(a) FIFO method (b) FIFO method
(c) NIFO method (d) LIFO method
41. Traffic flow analysis is a technique associated with (DSSSB 2019)
(a) Manufacturing units (b) Pharmacy stores
(c) Marketing (d) Drug control departments
42. In economic order quantity, which of the following should be minimum (DSSSB 2017, KPSC 2018)
(a) Ordering cost and carrying cost
(b) Ordering cost
(c) Carrying cost
(d) Ordering quantity
43. The items which becomes useless due to change in design, product or process are called (KPSC 2017)
(a) Slow moving items (b) Dormant items
(c) Obsolete items (d) Legitimate items
44. The minimum required area to open a retail drug store is (ESIC 2016)
(a) 15 sqm (b) 10 sqm (c) 40 sqm (d) 60 sqm
45. Mail order business is (Safdarjung Pharmacist 2012)
(a) Wholesale trade (b) Retail trade by post
(c) Direct selling trade (d) Retail trade
- (a) Planning (b) Leading
(c) Organising (d) Controlling
4. Which of the following is NOT a survey technique in marketing research (DSSSB 2025 S3)
(a) Employer survey (b) Mail survey
(c) Field survey (d) Telephone survey
5. The different ways of as a channel of pharmaceutical marketing include email marketing, social media marketing and mobile app advertising. (DSSSB 2025 S3)
(a) Direct-to-consumer advertising
(b) Digital marketing
(c) Medical conferencing
(d) Consumer merchandising
6. Which channel strategy maximizes profitability for high-margin speciality drugs? (RRB 2025 S2)
(a) Direct-to-hospital sales
(b) Discounted online platforms
(c) Mass-market retail
(d) Third-party distributors
7. What is considered cut-throat competition in pharmacy business? (BTSC 2025)
(a) Providing free health advice
(b) Displaying government approved advertisements
(c) Referring customers to another pharmacy
(d) Trying to take over the business of other pharmacists through unethical means
8. Which sales promotion technique involves offering consumers a reduced price to increase short-term sales and move inventory? (OSSSC 2024)
(a) Loyalty programs (b) Coupons
(c) Free samples (d) Contests
9. What is the primary role of a pharmaceutical sales representative? (OSSC 2024)
(a) To dispense medications to patients
(b) To promote and sell pharmaceutical products to healthcare professionals
(c) To conduct clinical trials for new drugs
(d) To regulate drug prices
10. In which of the given options regarding the product situation, the Personal Selling becomes more effective and economical? (AIIMS Patna 2023)
1. When a product is in the maturity state of its life cycle and require creation demand
2. When a product requires demonstration
3. When product has no brand loyalty or very poor brand loyalty
(a) 1 and 3 only (b) 2 and 3 only
(c) 1 and 2 only (d) All 1, 2 and 3
11. The structure of the sales organization depends upon which of the following factors? (AIIMS Patna 2023)
1. Methods of distribution adopted by the firm
2. Personality of the sales manager

Sales Promotion

1. All of the following are the main objectives of production management in the pharmaceutical industry, EXCEPT: (DSSSB 2025 S1)
(a) Marketing (b) Optimum inventory level
(c) Increased productivity (d) Customer services
2. What is the main function of a wholesaler in the marketing channel? (DSSSB 2025 S1)
(a) Providing storage and distribution of goods
(b) Selling directly to consumers
(c) Manufacturing products
(d) Advertising products
3. Which of the following management functions involves setting goals and deciding how to achieve them? (DSSSB 2025 S1)

37. The monthly or weekly total of the purchases book is posted to—
 (a) Debit of the purchases account
 (b) Debit of sales account
 (c) Credit of the purchases account
 (d) Credit of sales account
38. A source document for recording entries in the purchases returns journal is generally—
 (a) A credit note (b) An invoice
 (c) A bill (d) A debit note
39. Which of the following errors will affect the accuracy of a Trial Balance?
 (a) Repair to building have been debited to buildings.
 (b) The total of purchases journal is Rs 1000 short.
 (c) Freight paid on new machinery has been debited to the freight account.
 (d) None of these.
40. The preparation of a trial balance helps in:
 (a) Locating errors of complex omission.
 (b) Locating errors of principle.
 (c) Locating errors of commission.
 (d) None of these.
41. Errors of commission do not allow:
 (a) Correct totalling of the balance sheet.
 (b) Correct totalling of the trial balance.
 (c) The trial balance to agree.
 (d) None of these.
42. Which of the following errors will not affect a trial balance?
 (a) Wrong balancing of an account.
 (b) Wrong totalling of an account.
 (c) Writing an amount in the wrong account but on the correct side.
 (d) None of these.
43. Financial statements include both the:
 (a) Balance sheet and Trading account
 (b) Balance sheet and Cash book
 (c) Balance sheet and Profit & Loss account
 (d) Trading account and Cash book
44. A balance sheet is a statement of _____ and _____ of a business enterprise as on a given date.
 (a) Assets and Liabilities (b) Expenses and Profits
 (c) Sales and Purchases (d) Debits and Credits
45. Profit and loss account reveals the _____ earned or _____ incurred by a firm during the _____.
 (a) Profit, Loss, Accounting period
 (b) Assets, Liabilities, Financial year
 (c) Cash, Credit, Quarter
 (d) Purchases, Sales, Week
46. Balance sheet provides information as to the _____ involved in running the business enterprise.
 (a) Net profit (b) Assets
 (c) Total amount of money (d) Liabilities
47. A financial analysis is made to obtain a better understanding of _____ and _____ of a firm.
 (a) Assets and Liabilities
 (b) Expenses and Profits
 (c) Financial position and Performance
 (d) Sales and Purchases
48. Budget is a _____ of management in carrying out its functions of planning and controlling operations.
 (a) Goal (b) Tool (c) Strategy (d) Policy
49. The term budgetary control is interchangeable with:
 (a) Budgeting (b) Accounting
 (c) Auditing (d) Planning
50. When all the functional budgets are combined into one harmonious unit, it is called:
 (a) Departmental budget (b) Master budget
 (c) Flexible budget (d) Cash budget

ANSWER KEY

Responsibilities of community pharmacists, GPP & SOPs

1-b	2-c	3-b	4-b	5-a	6-a	7-b	8-d	9-b	10-c
-----	-----	-----	-----	-----	-----	-----	-----	-----	------

Prescription and prescription handling

1-c	2-a	3-b	4-b	5-a	6-c	7-a	8-d	9-c	10-b
-----	-----	-----	-----	-----	-----	-----	-----	-----	------

Hospital Pharmacy

- 1. What are independent pharmacies? (BTSC 2025)**
 - (a) Operated and owned by a government body
 - (b) Operated and owned by an individual pharmacist
 - (c) Operated and owned by a hospital
 - (d) Operated and owned by a corporation
- 2. Model essential medicine list was prepared by: (KPSC 2025)**
 - (a) Hospital Management
 - (b) Government
 - (c) WHO
 - (d) DMO
- 3. Which of the following statements states the pharmaceutical functions of the hospital pharmacy services in a hospital? (OSSSC 2024)**
 - I. Furnishing drug information to physicians and other professional staff
 - II. Drug use review
 - (a) Only I
 - (b) Only II
 - (c) Both I and II
 - (d) Neither I nor II
- 4. According to the study group on hospitals (1968), for up to 400 beds in a hospital, how many pharmacists are needed? (OSSSC 2024)**
 - (a) 3
 - (b) 5
 - (c) 15
 - (d) 7
- 5. The role of a hospital pharmacist is: (ISRO 2024)**
 - (a) Ensuring inventory
 - (b) Dispensing medicines
 - (c) Monitoring medicine safety
 - (d) All of these
- 6. Bedding capacity of large hospitals (MRBTN 2023)**
 - (a) 1000 and above
 - (b) 200 and above
 - (c) 500 and above
 - (d) Between 800 – 1000
- 7. How many pharmacists are required for a 100 bed hospital (HPSSB 2020, UPNHM 2022)**
 - (a) 10
 - (b) 06
 - (c) 05
 - (d) 02
- 8. Which among the following is NOT a role of community pharmacist (MPESB 2022)**
 - (a) Nutrition counselling
 - (b) Individualization of drug therapy
 - (c) Rationale use of drugs
 - (d) Drug promotion to physicians
- 9. Community pharmacies that are individually owned by local pharmacies are termed as (MPESB 2022)**
 - (a) Food store pharmacies
 - (b) Mass merchandiser pharmacies
 - (c) Chain pharmacies
 - (d) Independent pharmacies
- 10. The minimum training hours required for pharmacy registration is _____ hours (MP Pharmacist 2020)**
 - (a) 200
 - (b) 100
 - (c) 500
 - (d) 300
- 11. There are various factors affecting the economy of a hospital. One of the factors is manufacturing capacity. Manufacturing capacity depends on (Delhi Pharmacist 2020)**
 - (a) Calculation of consumption rate and the size of equipment
 - (b) Direct cost and indirect cost of the hospital
 - (c) Number of technically incompetent and partially qualified pharmacists
 - (d) Availability of equipment and economy of a hospital to fulfil the requirement
- 12. Choose the hospital classified based on the cost (HPSSB 2020)**
 - (a) Budget hospital
 - (b) Small hospital
 - (c) Medium hospital
 - (d) Large hospital
- 13. The intake of a minimum of 4 to 10 drugs at the same time on a regular therapeutic basis is called (ESIC 2019)**
 - (a) Drug overdose
 - (b) Drug abuse
 - (c) Polypharmacy
 - (d) Drug overuse
- 14. Which one of the following is NOT a salient feature of a Hospital Pharmacy (CGHS Delhi 2018)**
 - (a) Design of a new drug
 - (b) Supply of Pharmaceutical Drugs
 - (c) Dispensing of Narcotic Products
 - (d) Supply and storage of ancillary products
- 15. Pharmacist is the link between the (CG Vyapam 2015)**
 - (a) Doctor and nurse
 - (b) Medical profession and public
 - (c) Medical practitioner and pharmaceutical industry
 - (d) Medical practitioner and medical profession
- 16. What is minimum space requirement for Manufacturing ASU drugs (Raj. NHM 2014)**
 - (a) 1200 sq. ft.
 - (b) 1600 sq. ft.
 - (c) 1800 sq. ft.
 - (d) 1300 Sq. ft.
- 17. Ambulatory patients are (ESIC 2014)**
 - (a) Required to admit in the ward for treatment.
 - (b) Required to go home after taking treatment in OPD
 - (c) Require emergency treatment
 - (d) None of these

10. Institute for Safe Medication Practices is known for:

- (a) Controlling drug manufacturing licenses
- (b) Publishing LASA drug lists and Tall Man lettering recommendations
- (c) Conducting hospital accreditation
- (d) Drug pricing regulation

Drug Interactions

1. The term 'precipitant drug' refers to: (RRB 2025 S4)

- (a) The drug whose effect is altered
- (b) A drug requiring dose adjustment
- (c) A drug that precipitates out of solution
- (d) The drug causing the interaction

2. Which of the following is/are the characteristic of pharmaceutical drug-drug interactions? (AIIMS Patna 2023)

1. It is a physicochemical interaction that occurs when drugs are mixed with i.v. Infusions causing precipitation or inactivation of active principles before it is administered

2. These drug-drug interactions occur when interacting drugs have either additive Effects or opposing effects

- (a) only 1
- (b) Both 1 and 2
- (c) only 2
- (d) neither 1 nor 2

3. Which one of the following is NOT a term associated with therapeutic Drug-drug inter action (RRB 2019)

- (a) Synergism
- (b) Antagonism
- (c) Oxidation
- (d) Addition

4. Physical or chemical incompatibility in IV admixtures belongs to:

- (a) Pharmacokinetic interactions
- (b) Pharmacodynamic interactions
- (c) Pharmaceutical interactions
- (d) Genetic interactions

5. Which factor can reduce absorption of acidic drugs like aspirin?

- (a) Antacids
- (b) Purgatives
- (c) Atropine
- (d) Antibiotics

6. Salicylates displacing tolbutamide from protein binding sites causes:

- (a) Hypoglycemia
- (b) Hypertension
- (c) Hyperthermia
- (d) Arrhythmia

7. Which of the following is an example of opposite pharmacological effect?

- (a) Sulphamethoxazole + Trimethoprim
- (b) Alcohol + Amphetamines
- (c) Thiazides + Digitalis
- (d) Aspirin + Codeine

8. Combination of aspirin + codeine gives:

- (a) Antagonistic effect
- (b) Additive analgesic effect
- (c) No effect
- (d) Toxicity only

9. Which advice should pharmacists always give to patients to avoid drug interactions?

- (a) Follow only OTC medicines without prescription
- (b) Use multiple physicians without sharing history
- (c) Avoid maintaining drug history
- (d) Strictly follow doctor's dosage and administration advice

10. Griseofulvin absorption is increased with:

- (a) Acidic fruits
- (b) Fatty foods
- (c) Milk
- (d) Alcohol

ANSWER KEY

Hospital Pharmacy

1-b	2-c	3-c	4-c	5-d	6-a	7-c	8-a	9-d	10-c
11-d	12-a	13-c	14-a	15-b	16-a	17-b	18-b	19-d	20-c

Different Committees in the Hospital

1-d	2-a	3-d	4-d	5-d	6-b	7-d	8-c	9-b	10-d
11-b	12-d	13-a	14-c	15-c	16-a	17-a	18-a	19-a	20-c

Terminologies

- The anatomical term opposite to lateral is (DSSSB 2025 S3)**
(a) Distal (b) Proximal (c) Medial (d) Superficial
- The structure nearer to the point of attachment of a limb or origin of a body part is termed as _____. (BTSC 2025)**
(a) Distal (b) Dorsal (c) Proximal (d) Ventral
- What does “dorsal” refer to? (Raj. NHM 2025)**
(a) Related to the back side of the body.
(b) Related to the front side of the body.
(c) Related to the lower part of the body.
(d) Related to the upper part of the body.
- What does the supine position refer to? (Raj. NHM 2025)**
(a) Lying flat on the back, face up
(b) Lying flat on the stomach, face down
(c) Sitting upright in a chair
(d) Standing straight with arms at the sides
- A horizontal plane separates the body into upper and lower portions (HSSC 2024)**
(a) Sagittal section (b) Frontal (coronal) section
(c) Transverse section (d) Cross-section
- Ventral cavity consists of _____ cavity. (HSSC 2024)**
(a) Vertebral (b) Thoracic
(c) Abdominal (d) Both (b) and (c)
- Which of the following has a specialization to treat cancer (OSSC 2024)**
(a) Orthopaedic (b) Paediatric
(c) Oncologist (d) Pulmonologist
- Angiology refers (HPSSC 2020)**
(a) Skeletal system (b) Articular system
(c) Integumentary system (d) Circulatory system
- Meaning of anatomy is (BCCL 2013, 2015, NCL 2016)**
(a) Study of plants (b) Study of microbes
(c) Study of human body parts (d) None of these
- The science of dealing with the studies of benign malignant tumor is (BCCL 2013, 2015, NCL 2016)**
(a) Etiology (b) Tumorology
(c) Hematology (d) Oncology
- What is the main function of the ribosomes? (BTSC 2025)**
(a) DNA replication (b) Energy production
(c) Protein synthesis (d) Steroid synthesis
- Golgi apparatus helps in: (BTSC 2025)**
(a) Protein denaturation
(b) DNA transcription
(c) Intracellular sorting and packaging of secretion products
(d) Cell division
- Which of the following organelles contains powerful digestive enzymes? (BTSC 2025)**
(a) Nucleus (b) Mitochondria
(c) Golgi apparatus (d) Lysosome
- Cell membrane is made of (HSSC 2024)**
(a) Phospholipids (b) Cholesterol
(c) Proteins (d) All of the above
- The cell division that reduces the chromosome number by half resulting in the production of haploid daughter cells is called (HSSC 2024)**
(a) Mitosis (b) Cytokinesis
(c) Karyokinesis (d) Meiosis
- _____ is a watery solution of minerals, gases, organic molecules and cell organelles that is found between the cell membrane and the nucleus. (HSSC 2024)**
(a) Lysosome (b) Mitochondria
(c) Cytoplasm (d) Ribosomes
- The internal chamber of mitochondria is referred to as (MPPGCL 2024)**
(a) Peroxisome (b) Nucleosome
(c) Mitosol (d) Microsome
- The cell constituent that is involved in maintaining the characteristic shape of the cell is (MPPGCL 2024)**
(a) Microfilament (b) Endoplasmic Reticulum
(c) Ribosome (d) Microtubule
- Golgi apparatus is involved in the (MPPGCL 2024)**
(a) Export of proteins stored in vesicles
(b) Synthesis of proteins
(c) Production of energy
(d) Movement of the cell and organelles within the cell
- Which organelle is known as the powerhouse of the cell? (AIIMS Bhubaneswar 2023)**
(a) Ribosome (b) Mitochondrion
(c) Golgi apparatus (d) Endoplasmic reticulum

Cell and its Organelles

58. Which of the following space where the infection of index finger will spread is due to (Raj. NHM 2012)
 (a) Mid palmer space
 (b) Radial bursa
 (c) Thenar space
 (d) Dorsum of hand of infection in ischiorectal fossa
59. Patella bone is present in (Raj. NHM 2012)
 (a) Palm (b) Skull (c) Knee (d) Ear
60. Nasal septum gets damaged. Its recovery requires cartilage known as
 (a) Hyaline cartilage (b) Elastic cartilage
 (c) Fibrous cartilage (d) Calcified cartilage

Haemopoietic system

- People with _____ blood are said to be universal donors. (DSSSB 2025 S1)
 (a) Type AB (b) Type B (c) Type O (d) Type A
- Which of the following components of blood is primarily responsible for oxygen transport? (OSSSC 2024, DSSSB 2025 S2)
 (a) White blood cells (b) Platelets
 (c) Plasma (d) Red blood cells
- When structure and function are co-ordinated, the body achieves a relative stability of its internal environment called _____. (DSSSB 2025 S1)
 (a) Physiological stability (b) Anatomical integrity
 (c) Hemostasis (d) Homeostasis
- The normal amount of haemoglobin (in g) per 100 ml of blood for adult females is: (DSSSB 2025 S2)
 (a) 14-20 g (b) 12-16 g (c) 13.5-18 g (d) 10-14 g
- The pH of human blood is: (AIIMS Bhubaneswar 2023, OSSSC 2020, DSSSB 2025 S2)
 (a) 7.50-7.65 (b) 7.05-7.35 (c) 6.8-7.0 (d) 7.35-7.45
- A straw colored liquid after the removal of the formed elements in the blood is called (RRB 2025 S4)
 (a) Serum (b) WBC (c) Plasma (d) RBC
- The average pH of Blood is _____ (Raj. NHM 2025)
 (a) 6.0 (b) 6.4 (c) 7.0 (d) 7.40
- One liter of blood contains _____ of iron. (HSSC 2024)
 (a) 200 mg (b) 500 mg (c) 800 mg (d) 1000 mg
- The matrix of blood is plasma, which is about _____ of the total blood volume in the body. (HSSC 2024)
 (a) 10% to 20% (b) 22% to 34%
 (c) 35% to 45% (d) 52% to 62%
- The granular leukocytes are the _____ which usually have nuclei in two or more lobes or segments and have distinctly colored granules when stained. (HSSC 2024)
 (a) Neutrophils (b) Eosinophils
 (c) Basophils (d) All of the above
- The liver is richly supplied with blood, of which _____ is received each minute from the intestines through the portal vein. (HSSC 2024)
 (a) 350 mL (b) 700 mL (c) 1100 mL (d) 1800 mL
- During clotting, the damaged tissue releases a complex of chemicals known as tissue factor. Tissue factor is otherwise known as (MPPGCL 2024)
 (a) Fibrinogen (b) Prothrombin
 (c) Fibrin (d) Thromboplastin
- Which of the following white blood cells is NOT a granulocyte? (OSSSC 2024)
 (a) Eosinophils (b) Basophils
 (c) Lymphocytes (d) Neutrophils
- In adults, haematopoiesis predominantly occurs in the:
 (a) Long bone shafts only
 (b) Axial skeleton and proximal ends of long bones
 (c) Liver and spleen
 (d) Cartilage and tendons
- Which of the following is a characteristic feature of type AB blood? (OSSSC 2024)
 (a) Contains anti-A antibodies
 (b) Contains anti-B antibodies
 (c) Contains both A and B antigens
 (d) Contains neither A nor B antigens
- Which plasma protein plays a key role in blood clotting (OSSSC 2024)
 (a) Albumin (b) Globulin
 (c) Fibrinogen (d) Hemoglobin
- What is the primary function of platelets in the blood (OSSSC 2024)
 (a) Transporting Oxygen (b) Fighting infection
 (c) Clotting blood (d) Carrying nutrients
- Which disorder is characterized by an abnormal increase in the number of white blood cells (OSSSC 2024)
 (a) Anaemia (b) Leukemia
 (c) Thrombocytopenia (d) Haemophilia
- What is the function of red blood cells in the human body? (AIIMS Bhubaneswar 2023)
 (a) Fighting infections (b) Transporting oxygen
 (c) Producing hormones (d) Clotting blood
- Thrombopoietin (TPO) is mainly produced by the:
 (a) Bone marrow (b) Liver
 (c) Kidney (d) Spleen
- Which of the following is a type of white blood cell involved in the immune response? (AIIMS Bhubaneswar 2023)
 (a) Platelet (b) Lymphocyte
 (c) Erythrocyte (d) Myocyte
- What is the name of the protein that carries oxygen in red blood cells? (AIIMS Bhubaneswar 2023)
 (a) Hemoglobin (b) Myoglobin
 (c) Albumin (d) Collagen

58. Pituitary gland is present (RRB 2015)
 (a) Below the brain (b) Above the brain
 (c) Inside the brain (d) Nowhere near the brain
59. Which is the largest Nerve in human body (RRB 2015)
 (a) Femoral Nerve (b) Sciatic Nerve
 (c) Pudendal Nerve (d) Thoracic Nerve
60. Temperature regulating center is located in the (Raj. NHM 2012)
 (a) Medulla (b) Cortex
 (c) Hypothalamus (d) Cerebrum

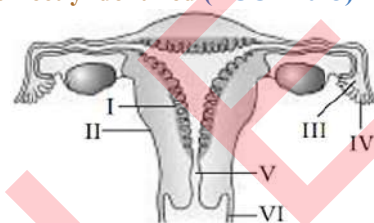
Sense Organs

1. The organ responsible for balance and equilibrium is located in the: (DSSSB 2025 S1)
 (a) Middle ear (b) Inner ear
 (c) Middle and outer ear (d) Outer ear
2. The outermost layer of the wall of the eye is the (DSSSB 2025 S2)
 (a) retina (b) iris (c) choroid (d) sclera
3. Retina is located at the _____. (NFL 2025 Set-B)
 (a) Front of your eye (b) Outside of the eye
 (c) Back of your eye (d) Lens
4. In what location can the corti organ be found? (NFL 2025 Set-B)
 (a) Eye (b) Throat (c) Nose (d) Ear
5. In the middle ear cavity there are _____ auditory bones. (HSSC 2024)
 (a) 2 (b) 3 (c) 4 (d) 5
6. How many sensory organs are present in human body (OSSC 2024)
 (a) 5 (b) 6 (c) 7 (d) 8
7. Which part of eye can be transplanted: (ISRO 2024)
 (a) Cornea (b) Retina
 (c) Optic nerve (d) None of these
8. Which system regulates body temperature, provides sensory information, and plays a role in vitamin D synthesis? (AIIMS Bhubaneshwar 2023)
 (a) Urinary system (b) Respiratory system
 (c) Integumentary system (d) Reproductive system
9. Match the following components of eye with their respective functions and mark the correct answer. (AIIMS Patna 2023)

1. Sclera	A. refracts light more than any other part of the eyeball
2. Cornea	B. contains relay neurons and sensory neurons that pass impulses along the optic nerve to brain
3. Iris	C. protects eyeball against mechanical damage
4. Retina	D. changes the size of the pupil controlling the amount of light passing to the inside of the eyeball

- (a) 1-D, 2-C, 3-B, 4-A (b) 1-C, 2-A, 3-D, 4-B
 (c) 1-A, 2-B, 3-C, 4-D (d) 1-C, 2-D, 3-A, 4-B
10. Loss of sense of smell is called as of (MRBTN 2023)
 (a) Anosmia (b) Aphasia
 (c) Ageusia (d) Photophobia
11. What is the primary pathophysiological change in the eye associated with age-related macular degeneration (AMD)? (SSB ASI 2023)
 (a) Increased intraocular pressure leading to glaucoma
 (b) Progressive damage to the optic nerve
 (c) Degeneration of the macula leading to central vision loss
 (d) Clouding of the lens leading to cataract formation
12. In the human eye, what is the function of the lens? (SSB ASI 2023)
 (a) To regulate the amount of light entering the eye
 (b) To provide structural support to the eyeball
 (c) To focus light onto the retina
 (d) To detect light and color
13. Light rays entering the eye is controlled by (HPSSC 2022)
 (a) Pupil (b) Iris (c) Cornea (d) Lens
14. Sebaceous glands are (HPSSC 2022)
 (a) Apocrine (b) Merocrine
 (c) Holocrine (d) None of these
15. Largest organ in the body is (BSSC 2019, ISRO 2021)
 (a) Liver (b) Skin (c) Bone (d) Lungs
16. Vision condition in which only close objects can be seen clearly is (MP Pharmacist 2020)
 (a) Cataract (b) Glaucoma
 (c) Hyperopia (d) Myopia
17. Trachoma is an infectious disease of the (ESIC 2019)
 (a) Lungs (b) Ears (c) Eyes (d) Liver
18. What type of epithelium is present in the conjunctiva of the human eye (DSSSB 2019)
 (a) Stratified squamous non-keratinizing epithelium
 (b) Transitional epithelium
 (c) Keratinized transitional epithelium
 (d) Keratinized Stratified epithelium
19. The ability of the eye lens to adjust its focal length is called (RRB 2019)
 (a) Magnification (b) Accommodation
 (c) Focal length (d) Modulation
20. Rods and cones are part of (CG Vyapam 2016, BSSC 2018)
 (a) Inner ear (b) Liver (c) Breast (d) Eye
21. The aperture of the human lenses is called (CG Vyapam 2016, BSSC 2018)
 (a) Iris (b) Cornea (c) Retina (d) Pupil
22. The tympanic membrane is a part of (CG Vyapam 2016, BSSC 2018)
 (a) Ear (b) Diaphragm (c) Heart (d) Appendix

18. Corpus luteum is maintained by (MPESB 2017)
 (a) FSH (b) Estrogen (c) HCG (d) Oxytocin
19. Which of the following structures in the human body is not gender-specific (CG Vyapam 2016)
 (a) Seminal vesicle (b) Fimbria
 (c) Left atrium (d) Cowper's gland
20. A human sperm may contain (RRB 2015)
 [P] X-chromosomes [Q] Y-chromosomes
 [R] XY-chromosome
 (a) P Only (b) P, Q and R (c) P and Q (d) Q only
21. The diploid number of chromosomes in human body is (RRB 2015)
 (a) 24 (b) 40 (c) 46 (d) 48
22. Identical twins arise when two (RRB 2015)
 (a) Cells develop independently from the same zygote
 (b) Gametes develop independently
 (c) Sperm develop independently
 (d) Ova develops independently
23. Which of the following glands control the development of sex organ in the human (RRB 2015)
 (a) Pancreas (b) Thyroid
 (c) Adrenal (d) Pituitary
24. Presence of which of the following in urine indicates pregnancy (BCCL 2013)
 (a) Prolactin (b) B-HCG
 (c) Methyl-progesterone (d) Testosterone
25. Cells of Leydig occur in (BCCL 2013)
 (a) Liver (b) Ovary (c) Testis (d) Spleen
26. Correct sequence of hormone secretion from beginning of menstruation is (BCCL 2013)
 (a) FSH, Progesterone, Estrogen
 (b) Estrogen, FSH, Progesterone
 (c) FSH, Estrogen, Progesterone
 (d) Estrogen, Progesterone, FSH
27. The figure given below depicts a diagrammatic sectional view of the female reproductive system of humans. Which one set of three parts out of I - VI have been correctly identified (BCCL 2013)



- (a) (I) Perimetrium, (II) Myometrium, (III) Fallopian tube
 (b) (II) Endometrium, (III) Infundibulum, (IV) Fimbriae
 (c) (III) Infundibulum, (IV) Fimbriae, (V) Cervix
 (d) (IV) Oviducal funnel, (V) Uterus, (VI) Cervix

28. Spermatozoa are formed (Raj. NHM 2011, 2012)

- (a) Vas deferens (b) Testis
 (c) Seminal vesicle (d) None of these

29. In female ovulation take place in regular menstrual cycle on (Raj. NHM 2011, 2012)

- (a) 14 days (b) 16 days (c) 20 days (d) 18 days

30. In the female reproductive organ, the foetus develops in _____.

- (a) Ovary (b) Vagina (c) Uterus (d) None of these

ANSWER KEY

Terminologies

1-c	2-c	3-a	4-a	5-c	6-d	7-c	8-d	9-c	10-d
-----	-----	-----	-----	-----	-----	-----	-----	-----	------

Cell and its Organelles

1-c	2-c	3-d	4-d	5-d	6-c	7-c	8-a	9-a	10-b
11-b	12-b	13-b	14-c	15-d	16-a	17-b	18-a	19-d	20-a
21-a	22-d	23-d	24-a	25-a	26-d	27-b	28-c	29-d	30-d
31-b	32-b	33-a	34-c	35-a	36-a	37-b	38-b	39-c	40-a

Fundamental Arithmetic Operations

- $1/7 + (999+692/693) \times 99$ is equal to: (DSSSB 2025 S1)
(a) 99800 (b) 99900 (c) 1 (d) 99000
- The value of $(4/7) \times (21/20) + (6/5 - 9)$ is: (RRB 2025 S2)
(a) $-36/5$ (b) $-29/3$ (c) $-35/9$ (d) $-39/8$
- The value of $(5/8) \times (24/25) + (9/5 - 4)$ is: (RRB 2025 S4)
(a) $-1/4$ (b) $-2/3$ (c) $-8/5$ (d) $-6/7$
- What is the value of P? $((179-128)/((4 \times 2)) + P = 200$ (NFL 2025 Set-B)
(a) 37 (b) 43 (c) 103 (d) 17
- Find the value of $(18+2-20) / (45-3 \times 3)$. (NFL 2025 Set-B)
(a) 43 (b) 7 (c) 37 (d) 82
- Simplify: $100 + 200 [10 \div 5 \times 6 + \{2 - 80 + 6 \times 16\}]$ (NFL 2025 Set-B)
(a) 2100 (b) 700 (c) 6100 (d) 610
- Write the multiplicative inverse of $-13/19$? (KSSSCI 2024)
(a) $13/19$ (b) $19/13$ (c) $-19/13$ (d) $-26/38$
- Find the value of x in this equation: $(3 + x) / (2x - 3) = -1/2$ (KSSSCI 2024)
(a) $4/3$ (b) $-3/4$ (c) $-2/3$ (d) $1/2$
- The equation $y = 5$, in two variables, can be written as: (KSSSCI 2024)
(a) $1x + 1y = 5$ (b) $0x + 1y = 5$
(c) $1x + 0y = 5$ (d) $0x + 1y = 5$
- Find the number of solutions of the following pair of linear equations $x+2y-8=0$ and $2x+4y=16$ (KSSSCI 2024)
(a) 0 (b) 1 (c) 2 (d) Infinite
- In the following expression, what will replace the “?”: $2^3 + \sqrt{?} = \sqrt[3]{64} + \sqrt[3]{2197}$ (SSB ASI 2023)
(a) 101 (b) 9 (c) 21 (d) 81
- What is the value of: $25 \times 46 \div 8 \times 9 \div 75 \times 44 \div 3 \times 15 - 72 \div 16 \times 15 \div 3 \times 6 \div 18 \times 64 = ?$ (ITBP ASI 2023)
(a) 3215 (b) 3415 (c) 3315 (d) 3115
- $(475 + 425)^2 - 4 \times 475 \times 425$ is equal to: (IIT Roorkee 2021)
(a) 3160 (b) 3500 (c) 2500 (d) 3600
- A cricket team won 3 matches more than they lost. If a win gives 2 points and a loss -1 point, how many matches in all have they played if their score is 23? (IIT Roorkee 2021)
(a) 17 (b) 20 (c) 23 (d) 25
- The value of $(4.5 \times 4.5 \times 4.5 \times 4.5) \div 225 \div 25 + 53 = ?$ (DSSSB 2021)
(a) 128.0528 (b) 125.0729
(c) 124.0829 (d) 125.0739
- Which of the following is equal to x^3 (OSSSC 2020)
(a) $X^6 \cdot X^3$ (b) X^6/X^3 (c) $X^6 \cdot X^3$ (d) $(X^6)^3$
- $0.1 \times 0.02 \times 0.0037 = ?$ (ESIC 2016)
(a) 0.0000006 (b) 0.0006
(c) 0.000006 (d) 0.0006
- If the mean of 6, 4, 7, x and 10 is 8. find x (DSSSB 2015)
(a) 12 (b) 13 (c) 14 (d) 15
- Three angles of a triangle are in arithmetic progression. The three angles are (RRB 2015)
(a) $30^\circ, 45 \text{ deg } 60^\circ$ (b) $40 \text{ deg } 50 \text{ deg } 60 \text{ deg}$
(c) $40^\circ, 60^\circ, 80^\circ$ (d) There are infinite solutions
- Simplify the following expression. $(3-3 \times 3+3 \div 3+3 \times 5) \times 2$ of $5 + (2+2 \div 2+2 \times 2-2)$
(a) 102 (b) 100 (c) 106 (d) 105

Mensuration

- A solid right circular cone of height 16 cm and radius 12 cm is cut at a distance of 4 cm from the vertex by a plane parallel to the base of the cone. Find the volume (in cm^3) of the small cone formed. (Use $\pi = 3.14$) (DSSSB 2025 S1)
(a) 37.68 (b) 75.36 (c) 52.76 (d) 113.04
- A hemispherical tent with a semi-circular door of radius 14 inches and a circular window across the door of radius 7 units is put up. If the cost for putting up the tent at ₹2.5 per square inch of the canvas used is ₹26,565, find the minimum cost (in ₹) of carpeting the floor of the tent with a single square carpet that would just fully cover the floor of the tent at ₹10 per square inches. (Use $\pi = 22/7$) (DSSSB 2025 S2)
(a) 62,580 (b) 2,86,260
(c) 44,080 (d) 70,560
- The base and corresponding height of a parallelogram are 23 cm and 87 cm respectively. Find the area (in cm^2) of the parallelogram. (DSSSB 2025 S2)
(a) 1968 (b) 2049 (c) 2001 (d) 2040
- An open water drum is in the form of a cylinder. The height of the drum is 76 m and its internal diameter is 92 m.

5. What is the value of $6.3 \times 6.3 + 2 \times 6.3 \times 3.7 + 3.7 \times 3.7 = ?$
 (a) 10 (b) 100 (c) 6.76 (d) 1

Age

- Radha is 36 years older than her daughter Sadhna. Nine years ago, Radha's age was three times the age of Sadhna. Find the present age of Radha and Sadhna. (MPPGCL 2024)
 (a) 90 years and 54 years (b) 63 years and 27 years
 (c) 54 years and 18 years (d) 60 years and 24 years
- Tanya's grandfather was 8 times older to her 16 years ago. He would be 3 times her age 8 years from now. 8 years ago, what was the ratio of Tanya's age to that of her grandfather? (IIT Roorkee 2021)
 (a) 11:53 (b) 1:3 (c) 1:7 (d) 1:5
- Ten years ago, the average age of a man and his wife was 25 years. Today, the average age of these two and their son taken together is 25 years. What is the age of the (son in years) today (CGHS Nagpur 2018)
 (a) 2 (b) 8 (c) 5 (d) 10
- Mohan is thrice as old as Sam. Three years ago, Mohan was 45 years. How old is Sam now (ESIC 2016)
 (a) 15 (b) 16 (c) 18 (d) 17
- In a class, except 18 persons, all are above 25 years of age. If 15 persons are below 25 years of age, how many persons are there in the class (RRB 2015)
 (a) 30 (b) 33 (c) 36 (d) None of these

Data Analysis

- Six companies, A, B, C, D, E and F, manufacture products that come in two models, M1 and M2. The following table shows the total products manufactured by these companies and the ratios of M1 and M2 among them. Study the table carefully and answer the question that follows. (DSSSB 2025 S1)

Company	Total products	M1:M2
A	2880	4:5
B	1870	6:11
C	4750	12:7
D	2560	3:5
E	2100	2:3
F	2460	2:1

What is the total number of M1 products manufactured by companies A and F together?

- (a) 2890 (b) 2920 (c) 2950 (d) 2970

- A candidate obtained a score of 65 out of 100 where a weightage of 20% was given to each of personality, teamwork and qualification. Weightage of 10% was for the written test score and 30% for the interview score. If his weighted average for personality, teamwork and qualification was 40 and his written test weighted average was 7, find the score of the candidate out of 100 in the interview. (DSSSB 2025 S2)
 (a) 45 (b) 18 (c) 60 (d) 30
- Study the following table carefully and answer the question based on it. (DSSSB 2025 S2)

Source of Income (₹)	Aarti	Amiya	Alia	Amit	Aditi
Salary	600	450	550	620	480
Bonus	110	90	130	120	180
Overtime	200	180	190	210	220
Arrears	200	230	270	250	180
Miscellaneous	50	55	35	45	75

How many employees have salaries less than 3 times their bonus?

- (a) Two (b) Three (c) One (d) Zero

- The given table shows the percentage of marks obtained by six students in five different subjects. Study the table carefully and answer the question that follows. (DSSSB 2025 S3)

Students	Maths (80)	English (80)	Science (120)	Hindi (150)	Social Science (60)
Amit	80	70	100	95	90
Badal	85	60	90	90	60
Charu	90	50	95	85	80
Deepak	95	80	90	90	100
Ekta	85	85	85	100	80
Farah	90	90	80	95	90

What are the average marks scored by all the students in Maths?

- (a) 88 (b) 87 (c) 86.5 (d) 87.5

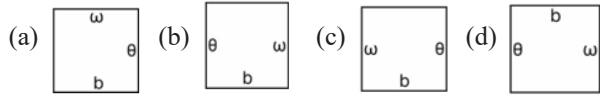
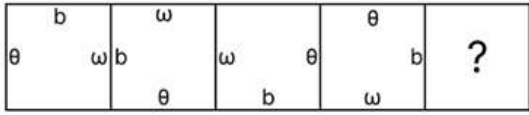
- The given table shows the number of 5 types of cars (Swift, Sx4, Ertiga, Zen, Echo) manufactured (in thousand) by Maruti over the years.

Year	Swift	Sx4	Ertiga	Zen	Echo
2007	250	200	128	140	115
2008	200	230	150	155	120
2009	230	225	142	160	135
2010	245	210	170	175	125
2011	260	135	180	185	130
2012	275	155	230	220	120

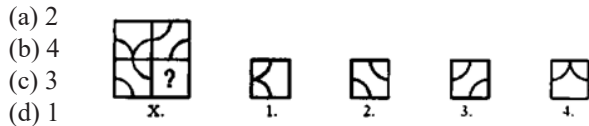
Analogy

- Select the set in which the numbers are related in the same way as are the numbers of the following sets. (NOTE: Operations should be performed on the whole numbers, without breaking down the numbers into their constituent digits. E.g. 13 - Operations on 13 such as adding/subtracting/multiplying to 13 can be performed. Breaking down 13 into 1 and 3 and then performing mathematical operations on 1 and 3 is not allowed.) (DSSSB 2025 S1)
(35, 16, 361) (37, 19, 324)
(a) (38, 20, 356) (b) (46, 32, 225)
(c) (29, 12, 289) (d) (31, 16, 256)
- Select the set in which the numbers are related in the same way as are the numbers of the following sets. (NOTE: Operations should be performed on the whole numbers, without breaking down the numbers into their constituent digits. E.g. 13 - Operations on 13 such as adding/subtracting/multiplying to 13 can be performed. Breaking down 13 into 1 and 3 and then performing mathematical operations on 1 and 3 is not allowed.) (DSSSB 2025 S1)
(5, 18, 26) (3, 10, 18)
(a) (9, 38, 46) (b) (7, 26, 34)
(c) (6, 21, 29) (d) (11, 34, 42)
- Select the set in which the numbers are related in the same way as are the numbers of the following sets. (DSSSB 2025 S3)
(5, 14, 25) (3, 12, 21)
(a) (4, 12, 21) (b) (7, 16, 35)
(c) (8, 32, 61) (d) (6, 15, 27)
- This question is based on the five, three-digit numbers given below. (DSSSB 2025 S3)
482, 262, 340, 326, 817
(Example: 697 → First digit = 6, second digit = 9 and third digit = 7)
(NOTE: All operations to be done from left to right.)
What will be the resultant if the second digit of the highest number is added to the third digit of the lowest number?
(a) 2 (b) 3 (c) 0 (d) 4
- 12 is related to 60 following a certain logic. Following the same logic, 23 is related to 115. To which of the following is 30 related, following the same logic? (DSSSB 2025 S2)
(a) 156 (b) 141 (c) 168 (d) 150
- Select the set in which the numbers are related in the same way as are the numbers of the following sets. (DSSSB 2025 S2)
(10 - 2 - 20) (4 - 8 - 32)
(a) (9 - 5 - 54) (b) (10 - 4 - 40)
(c) (12 - 3 - 34) (d) (8 - 5 - 30)
- Select the pair that follows the same pattern as that followed by the two pairs given below. (DSSSB 2025 S2)
BEB : DGD HKH : JMJ
(a) CEA : EHE (b) CFC : DHD
(c) CFC : EHE (d) CEA : DGD
- In the following number-pairs, the second number is obtained by applying certain mathematical operations to the first number. Select the pair in which the numbers are related in the same way as are the numbers of the following pairs. (Note: Operations should be performed on the whole numbers, without breaking down the numbers into its constituent digits. E.g., 13 Operations on 13 such as adding/subtracting/multiplying etc. to 13 can be performed. Breaking down 13 into 1 and 3 and then performing mathematical operations on 1 and 3 is not allowed.) (RRB 2025 S4)
(59, 71.6) (86, 98.6)
(a) (77, 91.6) (b) (41, 63.6)
(c) (92, 106.6) (d) (65, 77.6)
- 18 is related to 107 following a certain logic. Following the same logic, 21 is related to 125. To which of the given options is 14 related, following the same logic? (Note: Operations should be performed on the whole numbers, without breaking down the numbers into their constituent digits. E.g., 13 Operations on 13 such as adding/subtracting/multiplying to 13 can be performed. Breaking down 13 into 1 and 3 and then performing mathematical operations on 1 and 3 is not allowed.) (RRB 2025 S2)
(a) 91 (b) 87 (c) 83 (d) 95
- Choose the number pair or group which is different from others. (NFL 2025 Set-B)
(a) 9 : 82 (b) 16 : 257 (c) 8 : 63 (d) 4 : 17
- Choose the correct option to replace the question mark (?) Screen: Television :: ? : Car (KSSSCI 2024)
(a) Computer (b) Wheel (c) Mobile (d) Airplane

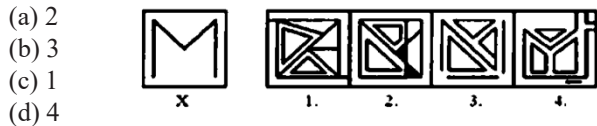
2. Identify the figure given in the options which when put in place of the question mark (?) will logically complete the series. (DSSSB 2025 S2)



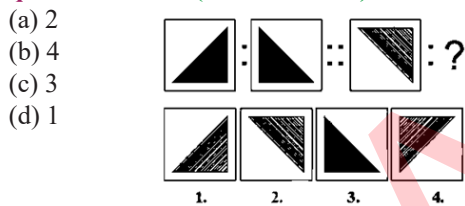
3. Which of the following options will replace the question mark in the given figure below? (SSB ASI 2023)



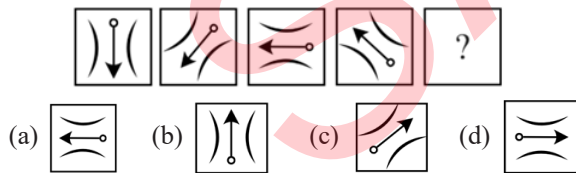
4. Which of the following options will embed the original image (XY)? Rotation is allowed in this question. (SSB ASI 2023)



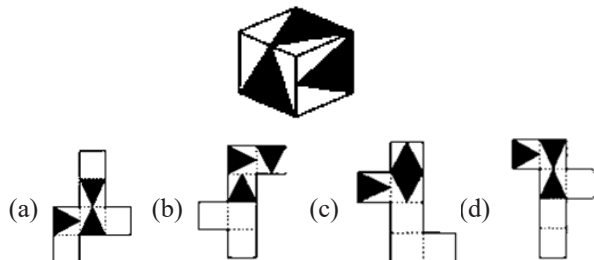
5. Which of the following option figures will replace the question mark? (SSB ASI 2023)



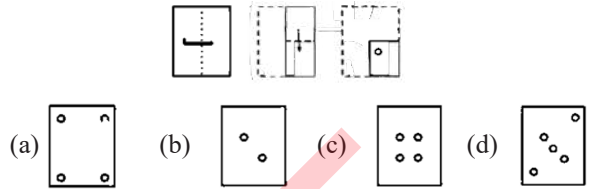
6. In the following question, select the figure which can be placed at the sign of question mark (?) from the given alternatives. (ITBP ASI 2023)



7. Which of the following patterns can be folded to make the cube shown in question? (DSSSB 2021)



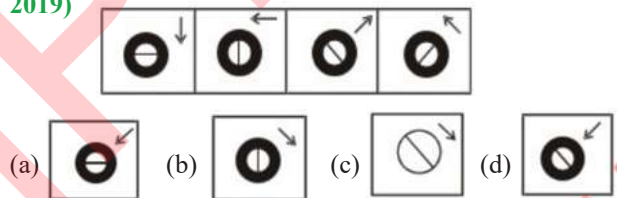
8. The sequence of folding a piece of paper and the manner in which the folded paper has been cut is shown in the following figures. How would this paper look when unfolded? (DSSSB 2021)



9. Select the figure (from 1, 2, 3 and 4) in which the given figure (X) is embedded (rotation is NOT allowed). (DSSSB 2021)



10. Study the following figures carefully and identify the similar figure from the options which has a relationship of conformity with the given set of figures. (ESIC 2019)



Direction & Distance

- Nork starts from Point A and drives 15 km towards the south. He then takes a right turn, drives 14 km, turns right and drives 17 km. He then takes a right turn and drives 19 km. He takes a final right turn, drives 2 km and stops at Point P. How far (shortest distance) and towards which direction should he drive in order to reach Point A again? (All turns are 90 degrees turns only, unless specified.) (DSSSB 2025 S1)
 - 5 km to the west
 - 3 km to the west
 - 2 km to the east
 - 4 km to the east
- Shaikh starts from Point A and drives 16 km towards the east. He then takes a left turn, drives 14 km, turns left and drives 19 km. He then takes a left turn and drives 17 km. He takes a final left turn, drives 3 km, and stops at Point P. How far (shortest distance) and towards which direction should he drive in order to reach Point A again? (DSSSB 2025 S3) (All the turns are 90° turns only, unless specified.)
 - 4 km to the north
 - 3 km to the north
 - 2 km to the north
 - 1 km to the north

Passages

Read the following passage and answer the Questions 1 to 5 in the context of the passage:

Failure and success are the go of life. Constant efforts despite initial setbacks have brought us from chrysalis of failure into the bright opportunity of triumphs. The conquest of Everest is a fitting example. Success eluded men of nearly twenty-five years. The leaders of an unsuccessful expedition stated, "Everest cannot add to its heights, but spirit of men can attain the unattainable." Subsequent conquest of Everest has proved the truth of this. Indeed, every new born day is itself an opportunity teeming with splendid chances for those who are alert, wide awake and aspiring.

1. According to the writer, the conquest of Everest proves that: (IIT Roorkee 2021)

- (a) The spirit of man heightens under demanding circumstances
- (b) Man can attain the unattainable
- (c) Success is not always elusive
- (d) Everest cannot add to its height

2. In the passage "chrysalis of failure" means that: (IIT Roorkee 2021)

- (a) Failure involves a closed situation from which one cannot escape
- (b) Failure can be compared to pupa of the gold colored
- (c) Failure is a transitional state
- (d) An insect emerges in a different shape from chrysalis, so a human being turns different after every failure

3. The expression "teeming with" in the passage can be replaced by: (IIT Roorkee 2021)

- (a) Multiplying
- (b) Abounding
- (c) Fruitful
- (d) Promising

4. Who is contradictory according to the first sentence of the passage? (IIT Roorkee 2021)

- (a) Who is young
- (b) Whose head is teeming with bright ideas
- (c) Who has come out of the chrysalis of failure
- (d) Who is watchful and daring

5. The very style of the prose suggests that the writer intends the last sentence of the passage to be: (IIT Roorkee 2021)

- (a) Poetic
- (b) Inspiring
- (c) Vague
- (d) Contradictory to the first sentence of the passage

ANSWER KEY

Analogy

1-c	2-c	3-d	4-b	5-d	6-b	7-c	8-d	9-c	10-c
11-b	12-a	13-b	14-b	15-b	16-b	17-a	18-a	19-b	20-c
21-c	22-b	23-a	24-b	25-c	26-a	27-c	28-d	29-d	30-b

Odd One Out

1-d	2-c	3-d	4-b	5-d	6-a	7-b	8-c	9-a	10-c
11-c	12-b	13-b	14-b	15-c	16-d	17-a	18-c	19-d	20-d

Missing Term in Series

1-c	2-b	3-d	4-d	5-a	6-b	7-b	8-d	9-b	10-a
11-c	12-d	13-d	14-d	15-b	16-a	17-b	18-b	19-d	20-a
21-c	22-b	23-c	24-b	25-b	26-d	27-c	28-b	29-b	30-b
31-b	32-a	33-c	34-c	35-a					

1. Select the most appropriate article to fill in the blank. If no article is needed, select 'No article required'. (DSSSB 2025 S1)
 _____ old horse stumbles and nods.
 (a) An (b) The (c) No article required (d) A
2. Select the most appropriate meaning of the given idiom. (DSSSB 2025 S1)
In the red
 (a) Spending and owing more money than being earned
 (b) Violating and transgressing the traffic rules
 (c) Prattling with mischievous intentions
 (d) Doubting and distrusting the others without any reason
3. Select the most appropriate option to fill in the blank. (DSSSB 2025 S1)
 The results of the experiment were _____ verified to ensure their validity.
 (a) hastily (b) superficially
 (c) thoroughly (d) barely
4. Select the most appropriate ANTONYM of the underlined word in the given sentence. (DSSSB 2025 S1)
 Her actions were deemed magnanimous, as she forgave those who had wronged her deeply.
 (a) Selfish (b) Benevolent
 (c) Generous (d) Altruistic
5. Select the option that can be used as a one-word substitute for the given phrase. (DSSSB 2025 S1)
 A rhetorical technique of repeating the last word of one clause at the beginning of the next.
 (a) Anadiplosis (b) Epizeuxis
 (c) Epanaphora (d) Symploce
6. Select the INCORRECTLY spelt word. (DSSSB 2025 S1)
 (a) Permissable (b) Conference
 (c) Absence (d) Professor's
7. Select the most appropriate option that can substitute the underlined word in the given sentence. (DSSSB 2025 S1)
 Even though the insidious effects of the propaganda were elusive, they finally permeated every aspect of society.
 (a) Zealous (b) Outspoken
 (c) Forthright (d) Treacherous
8. Select the most appropriate option to fill in the blank. (DSSSB 2025 S1)
 Reshma double-checked all her calculations because she wasn't confident _____ the outcomes of the experiment.
 (a) to (b) about (c) out (d) for
9. Select the most appropriate article to fill in the blank. If no article is required, select 'No article required'. (DSSSB 2025 S1)
 When discussing theories of artificial intelligence, the researcher argued that _____ algorithm capable of self-learning would revolutionise industries beyond imagination.
 (a) the (b) a (c) an (d) No article required
10. Select the INCORRECTLY spelt word. (DSSSB 2025 S1)
 (a) Limerence (b) Perspicacity
 (c) Surreptitious (d) Recelcitrent
11. Sentences of a paragraph are given below in jumbled order. Arrange the sentences in the correct order to form a meaningful and coherent paragraph. (DSSSB 2025 S1)
 (A) This requires not only linguistic skill but also a keen sense of rhythm and pacing.
 (B) Crafting impactful prose is an art.
 (C) The way sentences are structured can evoke emotions and create suspense.
 (D) Syntax is, therefore, a writer's most powerful tool.
 (a) BADC (b) BDCA (c) CBDA (d) BACD
12. Select the option that can be used as a one-word substitute for the given phrase. (DSSSB 2025 S1)
 A large fire which burns a lot of buildings, land, and forests.
 (a) Effervescence (b) Conflagration
 (c) Cacophony (d) Alacrity
13. Select the most appropriate meaning of the given idiom. (DSSSB 2025 S1)
Put all one's eggs in one basket
 (a) To invest all one has in a single bank
 (b) To risk all one has on a single venture
 (c) To expect greater harvests than the previous ones
 (d) To confess all the illegal activities
14. Select the most appropriate option to fill in the blank. (DSSSB 2025 S1)
 Her success was due to her _____ attitude, always finding solutions despite the challenges.
 (a) Resourceful
 (b) Complacent
 (c) Defeatist
 (d) Passive

70. Choose the appropriate idiomatic expression for the given sentence. (NFL 2025 Set B)
The classes are held _____; so, none attended them.
(a) In a jiffy (b) Once in a blue moon
(c) To please the gods (d) Come rain or high fire
71. Choose the option that best fits into the given sentence. Last year, the dry land _____ away by rain and rivers.
(a) Wash (b) Is washed
(c) Was washed (d) Was washing
72. Choose the option that shows the correct change in voice. (NFL 2025 Set B)
Nuts were being gathered by the squirrel.
(a) The squirrel was gathering nuts.
(b) What was the squirrel doing?
(c) The squirrel has been gathering nuts.
(d) Were the nuts being gathered by the squirrel?
73. Choose the appropriate idiomatic expression for the given sentence. (NFL 2025 Set B)
I thought I had escaped, but actually I went _____.
(a) as pale as a sheet
(b) from pillar to post
(c) in the dumps
(d) out of the frying pan into the fire
74. Choose the correct option for the sentence written in error below. (NFL 2025 Set B)
My pet dog, Buster, ran of the bushes.
(a) My pet dog, Buster, run of the bushes.
(b) My pet dog, Buster, ran off the bushes.
(c) My pet dog, Buster, ran for the bushes.
(d) My pet dog, Buster, ran into the bushes.
75. Choose the precise one-word substitute for: (NFL 2025 Set B)
“Duty on imports or exports”
(a) Customs (b) Tariff (c) Excise tax (d) Penalty
76. Choose the option that shows the correct change of voice. (NFL 2025 Set B)
The children were playing football in the ground.
(a) Was football being played by the children?
(b) Were the children playing football in the ground.
(c) Football was being played by the children in the ground.
(d) Football is played by children in the ground.
77. Select the most appropriate verb to fill in the blank. “Currently, Devan _____ a response to Mohan’s question.” (MPPGCL 2024)
(a) Was typing (b) Has been typing
(c) Is typing (d) Types
78. Select the most appropriate synonym of the underlined word. One of the qualities for achieving greatness is industriousness: (MPPGCL 2024)
(a) Forgiveness (b) Generosity
(c) Diligence (d) Empathy
79. Select the most appropriate verb to fill in the blank. “Copper is known to _____ in all the states.” (MPPGCL 2024)
(a) Existed (b) Exists (c) Existing (d) Exist
80. Select the most appropriate option to fill in the blank. “You aren’t too occupied _____?” (MPPGCL 2024)
(a) Can you (b) Are you (c) Do you (d) Will you
81. Select the most appropriate option to fill in the blank: (MPPGCL 2024)
The dancer gracefully his _____ body many times during the dance show.
(a) Performed (b) Twittered
(c) Twirled (d) Executed
82. Past tense of the word drive (KSSSCI 2024)
(a) Driven (b) Drove (c) Drive (d) Derived
83. Past tense of the word “Freeze”? (KSSSCI 2024)
(a) Freeze (b) Freezed (c) Frozen (d) Froze
84. Fill in the given sentence correctly: The cow is _____ sacred animal. (KSSSCI 2024)
(a) a (b) an (c) the (d) very
85. Fill in the given sentence correctly: Mother Teresa _____ to help the helpless (KSSSCI 2024)
(a) had used (b) use (c) was used (d) used
86. Change the following into passive voice ‘Do not insult your elders’ (KSSSCI 2024)
(a) Let not your elders be insulted
(b) Your elders let not be insulted
(c) Let your elders not be insulted by you
(d) Let us not insult your elders
87. A person who renounces the world and practices self-discipline in order to attain salvation is— (KSSSCI 2024)
(a) Skeptic (b) Ascetic (c) Devotee (d) Antiquarian
- Read the following passage and answer the questions that follow. (88-91)
- It should be remembered that the nationalist movement in India, like all nationalist movement, was essentially a bourgeois movement. It represented the natural historical stage of development, and to consider it or to criticise it as a working-class movement is wrong. Gandhi represented that movement and the Indian masses in relation to that movement to a supreme degree, and he became the voice of Indian people to that extent. The main contribution of Gandhi to India and the Indian masses has been through the powerful movements which he launched through the National Congress. Through nation-wide action he sought to mould the millions and largely succeeded in doing so, and changing them from a demoralised, timid and hopeless mass, bullied and crushed by every dominant interest, and incapable of resistance, into a people with self-respect and self-reliance,

1. Another name of mapping Software is: (Raj. NHM 2025)

- (a) Data visualization software
- (b) Geographic Information System
- (c) Weather Prediction System
- (d) Spreadsheet Analysis

2. _____ is another term for antivirus software. (Raj. NHM 2025)

- (a) Anti-Malware
- (b) Malware detection program
- (c) Spyware eliminator
- (d) Network protection software

3. What is the term used for the word or phrase entered in the search box of a search engine? (Raj. NHM 2025)

- (a) Keyword
- (b) Homepage
- (c) Address
- (d) Web Address

4. What type of database is MS Access? (Raj. NHM 2025)

- (a) Server database
- (b) Distributed database
- (c) Desktop database
- (d) Network database

5. Match the following: (Raj. NHM 2025)

Description	Register
1. Keeps track of the next instruction to be executed	i. Accumulator (AC)
2. Holds instructions to be decoded by the control unit.	ii. Memory Address Register (MAR)
3. Points to the memory location to be accessed by the CPU.	iii. Program counter (PC)
4. Used for storing variables, temporary results and results from the ALU	iv. Instruction Register (IR)

Choose the most appropriate option from below:

- (a) 1-ii, 2-1, 3-iv, 4-iii
- (b) 1-iii, 2-iv, 3-ii, 4-i
- (c) 1-i, 2-iii, 3-iv, 4-ii
- (d) 1-iv, 2-iii, 3-1, 4-ii

6. _____ computers have their applicability in controlling air traffic and radar of national defence. (Raj. NHM 2025)

- (a) Micro
- (b) Mini
- (c) Super
- (d) Hybrid

7. 1024*1024*1024 bytes is: (Raj. NHM 2025)

- (a) 1 KB
- (b) 1 MB
- (c) 1 GB
- (d) 1 TB

8. Using _____ software one can resize, tag, organize pictures into albums by drag and drop, and can export the pictures for external use. (Raj. NHM 2025)

- (a) Digital workstation
- (b) Graphic editing
- (c) Image editing
- (d) Image organizer

9. Match the following: (Raj. NHM 2025)

Terminal Types	Description
1. Intelligent terminals	i. Connected to the main computer for input/output, cannot process data independently.
2. Dumb terminals	ii. Typically a personal computer with its own-memory, processor and firmware
3. General purpose terminals	iii. Designed for specific tasks, such as airline reservations or hospital monitoring
4. Job-oriented terminals	iv. Used for general application like Internet browsing, with local data processing capability

Choose the most appropriate option from below:

- (a) 1-i, 2-iv, 3-ii, 4-iii
- (b) 1-iv, 2-iii, 3-ii, 4-i
- (c) 1-iii, 2-iv, 3-i, 4-ii
- (d) 1-ii, 2-1, 3-iv, 4-iii

10. In a multiprocessor system where each multiple processors have their own local caches, what is the main challenge that needs to be addressed to ensure data consistency? (Raj. NHM 2025)

- (a) Cache replacement
- (b) Cache partitioning
- (c) Cache Coherence
- (d) Cache latency

11. Which of the following is an example of a toolkit used for building grids? (Raj. NHM 2025)

- (a) Apache Hadoop
- (b) Microsoft Azure
- (c) Globus toolkit
- (d) Microsoft word

12. Where is the Autofill handle located in an active cell? (Raj. NHM 2025)

- (a) Top left corner
- (b) Bottom left corner
- (c) Top right corner
- (d) Bottom right corner

13. The large text/document which cannot be viewed in one screen, therefore to view part of the page by page, _____ is used. (HSSC 2024)

- (a) Tool bar
- (b) Menu bar
- (c) Vertical scroll bar
- (d) Title bar

14. The first generation of computers used _____ for switching circuits and magnetic drums for memory. (HSSC 2024)

- (a) Transistors
- (b) Vacuum tubes
- (c) Integrated circuits
- (d) Microprocessors

15. _____ is a small-sized electronic component inside a computer that carries out various tasks involved in data processing as well as arithmetic and logical operations. (HSSC 2024)

- रमेश को उसकी इच्छा के अनुसार एक बहुत अच्छे संस्थान में नौकरी मिल गई है। रेखांकित वाक्यांश के लिए सार्थक शब्द क्या है?
(a) ईप्सित (b) इतिवृत्त
(c) आत्मोत्सर्ग (d) अहैतुक
- उचित कारक एवं उससे सम्बंधित चिह्न वाले विकल्प का प्रयोग करके निम्नलिखित वाक्य पूर्ण करें- मैंने मित्र _____ पत्र लिखा। (DSSSB 2025 S1)
(a) को - करण कारक (b) को - अधिकरण
(c) को - संप्रदान कारक (d) को - संबंध कारक
- दिए गए वाक्य को क्रम में लिखें- (DSSSB 2025 S1)
1. वह उनके व्यवहार, व्यापार तथा विचार-विनिमय की भाषा हो
2. राष्ट्रभाषा से अभिप्राय उस भाषा से है
3. जिसे राष्ट्र के सभी निवासी व्यवहार में लाएँ
4. यह भाषा संपूर्ण राष्ट्र को एक सूत्र में पिरोने का कार्य करती है
(a) 2314 (b) 3241 (c) 4312 (d) 2431
- 'आठ कनौजिया नौ चूल्हे' लोकोक्ति का अर्थ क्या है? (DSSSB 2025 S1)
(a) देखावटी रोना (b) एकता में बल है
(c) अलगाव की स्थिति (d) हर हालत में मुसीबत
- नायिका रूठकर चली गई। वाक्य में _____ क्रिया है। (DSSSB 2025 S1)
रेखांकित शब्द के लिए क्रिया का उचित भेद दिए गए विकल्प में से चुन कर वाक्य पूर्ण करें।
(a) प्रेरणार्थक (b) संयुक्त (c) अकर्मक (d) पूर्वकालिक
- पौराणिक कथाओं में इंद्र को देवताओं का राजा कहा गया है। रेखांकित शब्द का पर्यायवाची क्या है? (DSSSB 2025 S1)
(a) शिखी (b) पुरन्दर (c) व्योम (d) चैतन्य
- उपनिषदों में ब्रह्मज्ञान को परम मोक्षदायनी विधा के रूप में प्रतिष्ठित किया गया है। दिए गए वाक्य के किस भाग में त्रुटि है? (DSSSB 2025 S1)
(a) ब्रह्मज्ञान (b) मोक्षदायनी
(c) उपनिषदों (d) प्रतिष्ठित
- राजनीति में अक्सर बुरे उद्देश्य से की गई मंत्रणा का प्रभाव देखने को मिलता है। रेखांकित वाक्यांश के लिए सार्थक शब्द क्या है? (DSSSB 2025 S1)
(a) वाचाल (b) निरंकुश
(c) सद्यप्रसूता (d) दुराभिसंधि
- उचित कारक एवं उससे सम्बंधित चिह्न वाले विकल्प को चुनकर निम्नलिखित वाक्य पूर्ण करें- परीक्षा मार्च _____ होगी। (DSSSB 2025 S1)
(a) में - अधिकरण कारक (b) में - कर्ता कारक
(c) में - अपादान कारक (d) में - कर्म कारक
- वह अपनी माँ के पुराने आभूषण को बड़े प्यार से संजोकर रखता है। रेखांकित शब्द का पर्यायवाची क्या है? (DSSSB 2025 S1)
(a) यातुधान (b) वांछा (c) आभरण (d) सुरभोग
- ग्रामीण क्षेत्रों में दारिद्र्यता उन्मूलन के लिए सरकार ने अनेक योजनाएँ चलाई हैं। दिए गए वाक्य के किस भाग में त्रुटि है? (DSSSB 2025 S1)
(a) ग्रामीण (b) दारिद्र्यता (c) योजनाएँ (d) उन्मूलन
- दिए गए वाक्य को क्रम में लिखें- (DSSSB 2025 S1)
1. युवावस्था में जब मनुष्य समाज में प्रवेश करता है,
2. 'हाँ-में-हाँ' मिलानेवाले व्यक्तियों से मित्रता उचित नहीं है
3. उसका चित्त कोमल, अपरिपक्व तथा संस्कारग्राही होता है
4. इस अवस्था में अत्यधिक दृढ़ संकल्प वाले एवं
(a) 1342 (b) 2341 (c) 1423 (d) 2134
- 'तख्त या तख्ता' लोकोक्ति का अर्थ क्या है? (DSSSB 2025 S1)
(a) सख्ती से काम करना
(b) थकने पर विश्राम चाहिए
(c) शान से रहना या भूखों मारना
(d) हर तरह का लाभ ही लाभ
- निम्नलिखित वाक्य में रेखांकित शब्द के लिए विशेषण के सही भेद को दिए गये विकल्प में से चुनें - किसान ने खेत में थोड़ा-सा पानी छोड़ा। वाक्य में _____ विशेषण है। (DSSSB 2025 S1)
(a) संख्यावाचक (b) परिमाणवाचक
(c) संकेतवाचक (d) गुणवाचक
- इस मंदिर की भव्य वास्तुकला देखने योग्य है। वाक्य में विशेषण है। उचित विकल्प चुनकर वाक्य पूर्ण करें। (DSSSB 2025 S1)
(a) परिमाणवाचक (b) गुणवाचक
(c) संख्यावाचक (d) संबंधवाचक

16-20. दिए गए गद्यांश के आधार पर निम्नांकित प्रश्नों के उत्तर दीजिए
हास्य और व्यंग्य साहित्य और संवाद की ऐसी विधाएँ हैं, जो गहन संदेशों को सहजता और रोचकता के साथ प्रस्तुत करती हैं। हास्य मनुष्य को आनंद और उल्लास प्रदान करता है, जबकि व्यंग्य किसी सामाजिक, राजनीतिक या नैतिक विसंगति पर तीखा प्रहार करता है। जीवन चाहे व्यक्ति का हो या सामूहिक लोकजीवन हो, हास्य-व्यंग्य की आवश्यकता सभी जगह है। वस्तुतः हास्य-व्यंग्य एक ऐसा माध्यम है जो नीरस वातावरण को भी सुखद बना देता है।

भिन्न होते हुए भी एक जैसे दिखाई देते हैं। ये सभी वास्तव में दर्शनीय और आकर्षक है। हमारा देश अपने प्राकृतिक सौंदर्य के कारण सबके आकर्षण का केंद्र रहा है। यह उत्तर में कश्मीर और दक्षिण में कन्याकुमारी तक फैला हुआ है। पूरब में मिजोरम, नागालैंड और पश्चिम में गुजरात तक फैला हुआ है। अपनी सौंदर्य छवि से यह सभी को अपनी ओर आकर्षित करता है। इसके उत्तर में विश्व की सबसे ऊँची श्रेणियों वाला पर्वत हिमालय, भारत के प्रहरी के रूप में स्थित है। इसकी बर्फ की बोटियों को देखकर ऐसा लगता है कि मानो हमारे देश ने सफेद मुकुट धारण कर लिया हो। यहाँ बहने वाली गंगा, यमुना, ब्रह्मपुत्र, सिंधु जैसी नदियाँ इस देश के गले में पड़ी हुई मोतियों की माला के समान शोभा को बढ़ाती हैं। भारत में कई सारे ऐतिहासिक स्मारक भी हैं जो लोगों को अपनी ओर आकर्षित करते हैं। इस तरह हमारा भारत देश विभिन्न प्रकार के दर्शनीय स्थलों का महाकेंद्र होने के कारण विश्व का सबसे अनूठा राष्ट्र है।

80. 'मोटियों की माला' किसके सन्दर्भ में उपयोग हुआ है?

(ITBP ASI 2023)

- (a) नदियों के (b) पर्वतों से
(c) संस्कृतियों के (d) नागरों के

81. दिए गए अपठित गद्यांश का उपयुक्त शीर्षक क्या होगा?

(ITBP ASI 2023)

- (a) भौगोलिक दृष्टि (b) भारत का सौन्दर्य
(c) शास्त्र सौंदर्य (d) संस्कृति में विविधता

82. भारत की प्राकृतिक सुंदरता _____ और _____ है। (ITBP ASI 2023)

- (a) निराली, अदृढ़ (b) गर्म, अदृढ़
(c) निराली, अभिषाप (d) आकर्षित, अपवित्र

83. भारत के कारण सभी को अपनी ओर आकर्षित करता है।

(ITBP ASI 2023)

- (a) प्राकृतिक सौन्दर्य (b) गर्मी
(c) अमीरी (d) सर्दी

84. भारत किस का महाकेंद्र है?

- (a) नदियों (b) पर्वतों (c) दर्शनीय स्थलों (d) समुद्रों

85. निम्नलिखित में से कौन-सा शब्द अव्ययीभाव समास का सही उदाहरण नहीं है? (MPESB 2023)

- (a) शीतोष्ण (b) प्रतिदिन (c) घड़ी-घड़ी (d) भरपेट

86. निम्नलिखित में से किस विकल्प के सभी शब्द बहुवचन हैं?

(MPESB 2023)

- (a) बिंदिया, डिबिया (b) मित्रवर्ग, सज्जनलोक
(c) सीढ़ी, सखी (d) चुहिया, ऋतु

87. वाक्य "लड़कियों द्वारा गीत गाए जा रहे हैं।" से संबंधित वाच्य नियम में से कौन-सा है? (MPESB 2023)

- (a) भाववाच्य (b) कर्तृवाच्य
(c) कर्मवाच्य (d) क्रियावाच्य

88. निम्नलिखित में से समानता सूचित करने के लिए प्रयुक्त चिह्न कौन-सा है? (MPESB 2023)

- (a) विस्मयादिबोधक चिह्न (b) लाघव चिह्न
(c) योजक चिह्न (d) तुल्यतासूचकचिह्न

89. निम्नलिखित में से किस वाक्य में शब्दों का अनावश्यक एवं अनपेक्षित प्रयोग नहीं किया गया है? (MPESB 2022)

- (a) दूध की नाप माप होती है।
(b) इस पेंटिंग में मुगलकालीन समय की संस्कृति का चित्रण है।
(c) मैं उस समय लगभग सो रहा था।
(d) कामायनी एक महाकाव्य है।

90. निम्नलिखित में से कौन-सा शब्द विसर्ग संधि का सही उदाहरण नहीं है? (MPESB 2022)

- (a) नीरोग (b) दुर्बोध (c) मनोरथ (d) पदच्छेद

91. निम्नलिखित में से उपसर्ग/प्रत्यय के संदर्भ में असंगत/बेमेल शब्द का चयन कीजिए- (MPESB 2022)

- (a) सन्देश (b) दुर्लभ (c) निबन्ध (d) आशिकाना

92. निम्नलिखित में से योगिक शब्द का चयन कीजिए- (MPESB 2022)

- (a) नाक (b) जल (c) दुर्जन (d) राजपुत्र

93. निम्न में से किस वाक्य में विराम चिह्नों का प्रयोग सही नहीं किया गया है? (MPESB 2022)

- (a) सूरजभान कोई काम-वाम तो करता नहीं, बड़े भाई के यहाँ पड़े-पड़े टाइम पास कर रहा है।
(b) अपने घर में निर्बल भी बलवान या बहादुर होता है।
(c) लाभ जहाँ से होता है, वहीं खर्च हो जाता है।
(d) मुसीबत में, हमें छोटे, छोटे लोगों की भी खुशामद करनी पड़ती है।

94. 'हाथ डालना' मुहावरे का अर्थ है? (HPSSC 2022)

- (a) आरंभ करना (b) अनुनय विनय करना
(c) परवश होना (d) अभ्यस्त हो जाना

95. 'भास्कर' का पर्यायवाची है? (HPSSC 2022)

- (a) मार्तंड (b) आपत्य (c) निकर (d) समुच्चय

96. 'बुरई' का प्रत्यय है? (HPSSC 2022)

- (a) बू (b) बूर (c) राई (d) आई

97. 'धनश्याम' में समास है? (HPSSC 2022)

- (a) द्वंद्व (b) तत्पुरुष (c) बहुव्रीहि (d) अव्ययीभाव

98. सम्बोधन कारक एकवचन 'हे देवी' का सही बहुवचन होगा (DSSSB 2021)

- (a) हे देवियों (b) हे देवियों
(c) हे देवियों (d) हे देवियों

99. सुरेश ने एक गज कपड़ा खरीदा। वाक्य के रेखांकित अंश को किस विकल्प से प्रस्थापित किया जा सकता है? (DSSSB 2021)

- (a) गज तक (b) गज भर (c) गज भरा (d) पूरा गज

100. निम्नलिखित में से कौन सा वाक्य एकवचन का है? (DSSSB 2021)

- (a) हरि तुम्हारे मामा हैं। (b) प्रेम और हरि तुम्हारे मामा हैं।
(c) स्कूल के अनेक दाता हैं। (d) साधु आए हैं।

101. वचन की दृष्टि से कौन सा वाक्य अशुद्ध है? (DSSSB 2021)

- (a) हर एक कुआँ मीठे जल का नहीं होता।
(b) आपका दर्शन हुआ।
(c) उनके ओठ खुले।
(d) आँख से आँसू निकले।

Static GK

- The first three gallantry awards, namely Param Vir Chakra, Maha Vir Chakra, and Vir Chakra, were instituted by the Government of India on (DSSSB 2025 S1)**
(a) 2nd October 1952 (b) 14th November 1954
(c) 15th August 1947 (d) 26th January 1950
- The Prarthana Samaj, which sought to remove caste restrictions, abolish child marriage, encourage the education of women and end the ban on widow remarriage, was established in which year in Bombay? (DSSSB 2025 S1)**
(a) 1877 (b) 1888 (c) 1898 (d) 1867
- The Tropic of Cancer passes through which northeastern states of India? (DSSSB 2025 S1)**
(a) Manipur and Nagaland (b) Tripura and Mizoram
(c) Meghalaya and Sikkim (d) Assam and Manipur
- Who wrote the book 'Stri Purush Tulana', which criticises the social differences between men and women? (DSSSB 2025 S1)**
(a) Savitribai Phule (b) Sister Nivedita
(c) Tarabai Shinde (d) Sarojini Naidu
- In India, which of the following festivals is known for the traditional dance forms of Garba and Dandiya? (DSSSB 2025 S2)**
(a) Dussehra (b) Navratri (c) Baisakhi (d) Lohri
- In which of the following festivals do people observe fasts in honour of Lord Shiva? (DSSSB 2025 S2)**
(a) Dussehra (b) Shiv Puja
(c) Maha Shivaratri (d) Diwali
- Where is the headquarters of Indian Institute of Forest Management (IIFM)? (DSSSB 2025 S2)**
(a) Nagpur (b) Guwahati
(c) Dehradun (d) Bhopal
- Which festival celebrates the harvest season and is widely celebrated in Tamil Nadu? (DSSSB 2025 S3)**
(a) Makar Sankranti (b) Pongal
(c) Onam (d) Baisakhi
- Which agency is responsible for the promotion of coir industries in India? (DSSSB 2025 S3)**
(a) Coir Board of India
(b) Coir Commission of India
(c) Handicrafts Board
(d) The Coir Council of India
- The White Tiger by Aravind Adiga won which prestigious award? (DSSSB 2025 S3)**
(a) Booker Prize (b) JCB Prize
(c) Sahitya Akademi Award (d) Pulitzer Prize
- The Kendriya Hindi Sansthan (Central Hindi Institute) is located in which Indian city? (DSSSB 2025 S3)**
(a) Agra (b) Varanasi (c) Bhopal (d) Lucknow
- Match the following: (Raj. NHM 2025)**

Inventor	Invention
i. Charles Babbage	a. Punched Cards
ii. Herman Hollerith	b. Difference Engine
iii. Blaise Pascal	c. Calculator for multiplication.
iv. Baron, Gottfried	d. Mechanical adding machine

Choose the most appropriate option from below:
(a) i-b, ii-a, iii-d, iv-c (b) i-a, ii-d, iii-b, iv-c
(c) i-b, ii-c, iii-d, iv-a (d) i-d, ii-c, iii-a, iv-b
- Which of the following is not a direct initiative of the e-Governance Centre? (Raj. NHM 2025)**
(a) DigiLocker (b) DigiDhan
(c) MobileSeva (d) Swachha Bharat Mission
- The Headquarter of 'Wildlife Crime Control Bureau' is located at _____ (Raj. NHM 2025)**
(a) New Delhi (b) Mumbai (c) Patna (d) Kolkata
- Which of the following Indian cities is famous for its Chikankari form of embroidery? (NFL 2025 Set-B)**
(a) Lucknow (b) Jaipur (c) Indore (d) Kolhapur
- _____ is a ritual theatre and dance drama of Kerala. (NFL 2025 Set-B)**
(a) Jandiala (b) Kuchipudi
(c) Mayilattam (d) Mudi yettu
- Hali Award is given by (HSSC 2024)**
(a) Haryana Urdu Academy
(b) Haryana Punjabi Academy
(c) Haryana Sanskrit Academy
(d) Haryana Hindi Academy
- Who was the writer of 'Desan Mein Des Haryana'? (HSSC 2024)**
(a) Lakhmi Chand (b) Uday Bhanu Hans
(c) Dayachand Mayna (d) None of the above
- _____ flower has the largest area under cultivation in Haryana. (HSSC 2024)**
(a) Rose (b) Hibiscus (c) Lily (d) Marigold
- Which city of Haryana is also known as the city of scientific instruments? (HSSC 2024)**
(a) Ambala (b) Kaithal
(c) Faridabad (d) Gurugram

75. **The Vice President of India is elected by (DSSSB 2015)**
 (a) Members of Lok Sabha
 (b) Members of Rajya Sabha
 (c) Members of both Houses of Parliament
 (d) Member of all State Legislature
76. **Which of the following is not a part of the preamble to the Indian Constitution (KPSC 2015)**
 (a) Socialism (b) Secularism
 (c) Federalism (d) Republic
77. **The power of supreme Court of India to decide the dispute between the Centre and States falls under Its _____ Jurisdiction (KPSC 2015)**
 (a) Advisory (b) Appellate
 (c) Writ (d) Original
78. **The members of the State Public Service Commission are appointed by (KPSC 2015)**
 (a) Chief Minister (b) Chief justice
 (c) Chief Secretary (d) Governor
79. **Which Article of the Indian Constitution is related to Presidential Rule in States (KPSC 2015)**
 (a) Article 352 (b) Article 356
 (c) Article 359 (d) Article 360
80. **The constitution of India was adopted on (BCCL 2013)**
 (a) 26th November 1949 (b) 26th January 1950
 (c) 15th August 1947 (d) 26th January 1951
- (c) Karnataka Coast, Eastern Coast and Malabar Coast
 (d) Northern Circar Coast, Malabar Coast and Coromandel Coast
6. **The Dachigam Sanctuary, located in Jammu and Kashmir in India, is home to which of the following species? (RRB 2025 S2)**
 (a) Hippopotamus (b) Snow leopard
 (c) Indian bison (d) One-horned rhinoceros
7. **Select the correct pairing between a Himalayan division and a notable geographical feature associated with it: (RRB 2025 S4)**
 (a) Malleys located between the Lesser Himalayas and the Outer Himalayas-Duns
 (b) Valleys located between the Greater Himalayas and the Lesser Himalayas-Duns
 (c) Lesser Himalayas - Bara Lacha-La
 (d) Lesser Himalayas - Mount Everest
8. **Meja Dam is built on the river _____ (Raj. NHM 2025)**
 (a) Khari (b) Kothari (c) Gambhiri (d) Parvati
9. **Only two districts of Haryana do not share their boundary with any other state of India. One is Charkhi Dadri, which is the other one? (HSSC 2024)**
 (a) Rohtak (b) Gurugram (c) Palwal (d) Jind
10. **_____ lake is the biggest lake of Haryana. (HSSC 2024)**
 (a) Badkhal (b) Brahma Sarovar
 (c) Karnal (d) Damdama
11. **Which of the following district of Haryana has the highest number of trees with the heritage tags? (HSSC 2024)**
 (a) Sirsa (b) Hisar (c) Rewari (d) None of the above
12. **Which of the following mountain ranges is not a part of the Himalayas? (MPPGCL 2024)**
 (a) Pir Panjal (b) Kunlun (c) Ladakh (d) Zascar
13. **Which range of Himalayas is also known as 'Himadri'? (MPPGCL 2024)**
 (a) Shivalik Himalaya (b) Great Himalaya
 (c) Lesser Himalaya (d) Trans Himalaya
14. **At which place on earth are there days and nights of equal length always? (KSSSCI 2024)**
 (a) Equator (b) Poles
 (c) Prime Meridian (d) Nowhere
15. **Which of the following states is not located in the North? (KSSSCI 2024)**
 (a) Jharkhand (b) Jammu and Kashmir
 (c) Himachal Pradesh (d) Haryana
16. **Which of the following passes is located in Arunachal Pradesh? (AIIMS Raipur 2023)**
 (a) Rohtang Pass
 (b) Bomdila Pass
 (c) Both Bomdila & Rohtang Pass
 (d) Shipki La Pass & Rohtang Pass

Geography

1. **The Sundarbans is dominated by which type of vegetation? (DSSSB 2025 S1)**
 (a) Deciduous forest (b) Mangrove forest
 (c) Tropical rainforest (d) Coniferous forest
2. **Which of the following rivers flows towards the north direction in India? (DSSSB 2025 S2)**
 (a) Kosi (b) Luni (c) Gandak (d) Ken
3. **Which of the following rivers joins each other at Sonpur near Patna? (DSSSB 2025 S3)**
 (a) Gandak and Ganga (b) Gandak and Ghaghara
 (c) Ramganga and Ghaghara (d) Ramganga and Ganga
4. **Match the following List-1 with List-2: (DSSSB 2025 S3)**
List 1: Name of Tributary — List 2: Name of River
A. Kabini — I. Yamuna
B. Kameng — II. Ghaghara
C. Seti — III. Brahmaputra
D. Senger — IV. Kaveri
 (a) A-IV, B-III, C-I, D-II (b) A-I, B-II, C-IV, D-III
 (c) A-II, B-III, C-I, D-IV (d) A-IV, B-III, C-II, D-I
5. **Which of the following correctly lists the sections of the Western Coastal Plains in India? (RRB 2025 S2)**
 (a) Konkan Coast, Karnataka Coast and Malabar Coast
 (b) Konkan Coast, Coromandal Coast and Vembanad Coast

Current Affairs

1. **Eighteen-year-old Indian Grandmaster Gukesh Dommaraju created history by becoming the youngest-ever player to challenge for the FIDE World Chess Championship after winning which major tournament in 2024? (DSSSB 2025 S1)**
 - (a) FIDE Grand Prix
 - (b) Tata Steel Masters
 - (c) FIDE Candidates Tournament
 - (d) World Rapid Chess Championship
2. **What is the name of the scheme launched by the Government of India on 16 December 2024 to provide post-harvest financing to farmers through loans against electronic negotiable warehouse receipts (e-NWRs)? (DSSSB 2025 S1)**
 - (a) Pradhan Mantri Kisan Samman Nidhi
 - (b) Kisan Credit Card Scheme
 - (c) National Agricultural Market Development Scheme
 - (d) Credit Guarantee Scheme for e-NWR Based Pledge Financing (CGS-NPF)
3. **As of 31 January 2024, which of the following languages is NOT included in the list of classical languages of India? (DSSSB 2025 S1)**
 - (a) Telugu
 - (b) Tamil
 - (c) Maithili
 - (d) Sanskrit
4. **The autobiography 'Wings of Fire', which narrates the author's journey from a small town to becoming the President of India, was written by whom? (DSSSB 2025 S1)**
 - (a) Dr. Manmohan Singh
 - (b) Dr. APJ Abdul Kalam
 - (c) Dr. Rajendra Prasad
 - (d) Atal Bihari Vajpayee
5. **In February 2025, the Very Short-Range Air Defence System (VSHORADS), tested successfully off the Odisha coast, was developed by which of the following organisations? (DSSSB 2025 S1)**
 - (a) Defence Research & Development Organisation (DRDO)
 - (b) Hindustan Aeronautics Limited (HAL)
 - (c) Bharat Electronics Limited (BEL)
 - (d) Bharat Dynamics Limited (BDL)
6. **Who was the Speaker of the Lok Sabha as of May 2024? (DSSSB 2025 S2)**
 - (a) Kirtivardhan Singh
 - (b) Smriti Irani
 - (c) Om Birla
 - (d) Kaushal Kishor
7. **Which of the following is the central theme of the 3rd edition of Kashi Tamil Sangamam (KTS 3.0)? (DSSSB 2025 S2)**
 - (a) Maharishi Valmiki
 - (b) Maharishi Ved Vyas
 - (c) Legacy of Sage Agastya (Maharishi Agasthyar)
 - (d) Maharishi Sankaracharya
8. **Who became the oldest first-time World No. 1 in men's doubles following a title-winning run at the Australian Open? (DSSSB 2025 S2)**
 - (a) Rohan Bopanna
 - (b) Sumit Nagal
 - (c) Leander Paes
 - (d) Mahesh Bhupath
9. **What was the name of the torch unveiled for the 38th National Games hosted for the first time by Uttarakhand? (DSSSB 2025 S2)**
 - (a) Tejaswini
 - (b) Prakashdeep
 - (c) Agnishakti
 - (d) Vijay Jyoti
10. **Match the columns. (DSSSB 2025 S3)**
Name of Minister (As of January 2025) — Name of Ministry
 - A. Shivraj Singh Chouhan — I. Ministry of Rural Development
 - B. Manohar Lal — II. Ministry of Health and Family Welfare
 - C. Piyush Goyal — III. Ministry of Commerce and Industry
 - D. Jagat Prakash Nadda — IV. Ministry of Power
 - (a) A-I, B-IV, C-III, D-II
 - (b) A-II, B-III, C-I, D-IV
 - (c) A-I, B-II, C-IV, D-III
 - (d) A-III, B-I, C-IV, D-II
11. **How many Indian startups were selected in January 2025 for the inaugural India-U.S. space and defense collaboration program? (DSSSB 2025 S3)**
 - (a) 5
 - (b) 3
 - (c) 7
 - (d) 9
12. **Which Indian city hosted the Women's Asian Champions Trophy for the first time in November 2024? (DSSSB 2025 S3)**
 - (a) Rajgir
 - (b) Lucknow
 - (c) Bhubaneswar
 - (d) Chennai
13. **Which Indian government scheme, approved in January 2025, focused on establishing Inclusive Technology Business Incubators for underrepresented groups? (DSSSB 2025 S3)**
 - (a) Digital India
 - (b) Atal Innovation Missions
 - (c) Startup India
 - (d) NIDHI-ITBI
14. **Who among the following was posthumously awarded the Padma Vibhushan in January 2025 for his or her contributions to literature and education? (RRB 2025 S2)**
 - (a) MT Vasudevan Nair
 - (b) Osamu Suzuki
 - (c) Sharda Sinha
 - (d) Kumudini Lakhia
15. **Who was sworn in as the Chief Minister of Maharashtra on 5 December 2024, following the state assembly elections? (RRB 2025 S2)**
 - (a) Uddhav Thackeray
 - (b) Eknath Shinde
 - (c) Devendra Fadnavis
 - (d) Ajit Pawar
16. **The Indian government launched a new digital health initiative in 2025, to improve healthcare accessibility and interoperability of medical data. What is the name of this initiative? (RRB 2025 S2)**
 - (a) National Health Stack Expansion

AIIMS



**CGHS,
HPPSC, BTSC, ISRO,
KERALA PSC,
MP PHARMACIST,
SECL, DSSSB,
BCCL**



RRB

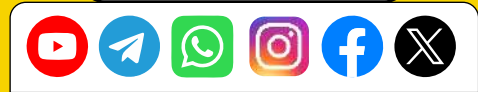
ESIC



UP NHM

ABOUT PHARMACY INDIA

Our classes set up with an aim to provide coaching to the aspiring students who are dedicated and want to achieve excellence in their career. we nurture aspirants and facilitated achievement and we specialized in providing correct and relevant information related to Pharma institute admission for higher education.



PHARMACY INDIA

Street No.-4, Dayalpuram, Khatauli, Muzaffarnagar, 251201



8171313561, 8006781759



pharmacyindia24@gmail.com



Pharmacyindia.co.in

ISBN : 978-93-340-3461-5



9 789334 034615

NOW WE ARE AVAILABLE ON



PRICE:- ₹999.00/-

