

GPAT-2013

Pharmaceutics

- Pitot tube measure _____ using a manometer**
(a) Surface area (b) Liquidity
(c) Velocity head (d) Pressure head
- What kind of substances can't permeate membranes by passive diffusion**
(a) Lipid-soluble (b) Non-ionized substances
(c) Hydrophobic substances (d) Hydrophilic substances
- Which among of the following variable is not a reason of errors during particle analysis by sieving method**
(a) Sieve loading (b) Intensity of agitation
(c) Duration of agitation (d) Size of the particles
- The time in minute at a specific temperature needed to kill a population of cell or spore is called**
(a) D-value (b) F-value
(c) Z-value (d) None of these
- Study the following statements**
[P] Fixatives in perfumes decrease rate of evaporation
[Q] Astringent is main ingredient in antiperspirant
[R] Melanin protects breakdown of bones
[S] Hard water contains a lot of calcium and potassium salt
Choose the correct combination of statements
(a) [P] and [Q] are correct (b) [R] and [S] are correct
(c) [P] and [S] are correct (d) [Q] and [R] are correct
- All are true EXCEPT**
(a) Soft soaps give emulsions with a pH in the basic range
(b) Hard soaps form water-in-oil emulsions
(c) Water-soluble polymers favour the formation of water-in-oil (w/o) emulsions
(d) On the HLB system, lower numbers are assigned to lipophilic compounds while higher numbers are assigned to hydrophilic compounds.
- Study conditions for long term stability testing of new drugs is**
(a) $30^{\circ}\text{C} \pm 2^{\circ}\text{C} / 65\% \text{RH} \pm 5\% \text{RH}$
(b) $30^{\circ}\text{C} \pm 2^{\circ}\text{C} / 75\% \text{RH} \pm 5\% \text{RH}$
(c) $40^{\circ}\text{C} \pm 2^{\circ}\text{C} / 65\% \text{RH} \pm 5\% \text{RH}$
(d) $40^{\circ}\text{C} \pm 2^{\circ}\text{C} / 75\% \text{RH} \pm 5\% \text{RH}$
- Myrj 52 is**
(a) Sodium oleate
(b) Polyoxy ethylene Mono-stearate
(c) Polyoxy lauryl ether
(d) Polyoxy ethylene castor oil
- Which among the following is the Henderson Hasselbach equation for a weak base and its salt**
(a) $\text{pH} = \text{pK}_a + \text{Log}([\text{salt}]/[\text{base}])$
(b) $\text{pH} = \text{pK}_a + \text{Log}([\text{base}]/[\text{salt}])$
(c) $\text{pH} = \text{pK}_b + \text{Log}([\text{salt}]/[\text{base}])$
(d) $\text{pH} = \text{pK}_b + \text{Log}([\text{base}]/[\text{salt}])$
- Hydroxy ethyl carboxy methyl alkyl imidazolium hydroxide is an amphoteric surfactant which is known as**
(a) Macrogol (b) Miranol
(c) Poly vinyl pyrrolidone (d) Povidone
- The antibacterial activity of phenols is increased by**
(a) Increasing the pH
(b) The presence of 10% vegetable oil phase
(c) Increasing the temperature
(d) The addition of a quaternary ammonium compound
- Which of the following schedules includes shelf life of drugs**
(a) Schedule P (b) Schedule M
(c) Schedule N (d) Schedule S
- Which aerosol particles will be deposited in alveoli**
(a) $>20 \mu\text{m}$ (b) $<0.6 \mu\text{m}$
(c) 2 and $6 \mu\text{m}$ (d) 1-2 μm
- How much can be the working revolution per minute (RPM) of the ball mill**
(a) 23-28 "D where D means the diameter of jar
(b) Two times more than the critical revolution per minute
(c) 42.3 D (D-diameter of the jar)
(d) The average of critical RPM and the optional RPM
- HEPA filter prevents the entry of microbes of size**
(a) Less than 0.3μ (b) Less than 0.1μ
(c) More than 0.3μ (d) More than 0.1μ
- The biological half-life of procaine in a patient was 35 minutes & Its V, was estimated to be 60L. The total clearance rate of procaine is**
(a) 1.188L/min (b) 0.115L/min
(c) 11.5 L/min (d) 5.57L/min
- Liposomes are used for all EXCEPT**
(a) Amphotericin-B (b) Doxorubicin
(c) Propranolol (d) Vincristine
- The chelate, EDTA can described as what type of chelating ligand**
(a) Bidentate (b) Tetradentate
(c) Hexadentate (d) Tridentate
- How much duty has to charge for the Ayurveda preparations which can be consumed as alcoholic beverages per L.P. litre.**
(a) Rs. 2/- (b) Rs. 1/- (c) Rs. 5/- (d) Rs.30/-
- Browne's tube is used**
(a) As a chemical indicator for sterilization
(b) To check density
(c) To measure viscosity
(d) To store brown solutions

21. Which statistical tool is used for the bioequivalence study

- (a) t-Test (b) Chi-square test
(c) Null Hypothesis (d) ANOVA

22. Example for Desensitizing agents

- (a) Zinc oxide (b) Strontium chloride
(c) Sodium fluoride (d) Calcium carbonate

23. For first order reactions the rate constant, k , has the units as

- (a) Ms^{-1} (b) $\text{M}^{-1} \text{s}^{-1}$ (c) $\text{M}^{-2} \text{s}^{-1}$ (d) s^{-1}

24. Sorensen apparatus is used for determination of

- (a) Crystal growth (b) pH scale
(c) HLB value (d) Interarticular force

25. For the determination of dissolution profile of Microspheres, which is the best dissolution model we can apply

- (a) Baker Lonsdale (b) Hixon-Crowell model
(c) Higuchi model (d) Noye's Whitney equation

26. Stokes Einstein equation to the series of

- (a) Energy changes in Sedimentation suspension setting
(b) Sedimentation of suspension
(c) Diffusion coefficient
(d) Coefficient of energy consumption

Description	Parts of solvent required
1. Very Soluble	[P] 10-30
2. Sparingly soluble	[Q] 100-1000
3. Soluble	[R] < 1
4. Slightly Soluble	[S] 30-100

Match the following from specific group

- (a) 1-[Q], 2-[R], 3-[P], 4-[S]
(b) 1-[P], 2-[Q], 3-[R], 4-[S]
(c) 1-[S], 2-[R], 3-[Q], 4-[P]
(d) 1-[R], 2-[S], 3-[P], 4-[Q]

28. Heckel's plot represents

- (a) Extent of plastic and elastic deformation of material during compaction
(b) Force-time of force-displacement relationship
(c) Pressure-porosity (volume) relationship
(d) Stress relaxation measurements

29. Which of the following pharmacokinetics parameter is useful in representing the rate and extent of absorption of a drug

- (a) C_{\max} (b) Clearance
(c) t_{\max} (d) Area under the curve

30. Stoke's formula for sedimentation velocity V is given by

- (a) $\frac{d^2(p_1-p_2)g}{18\eta}$ (b) $\frac{d^2(p_1+p_2)g}{18\eta}$
(c) $\frac{d^2(p_1+p_2)g}{9\eta}$ (d) $\frac{r^2(p_1-p_2)g}{18\eta}$

31. Dry Gum Method is also known as

- (a) Continental method
(b) English method
(c) Bottle method
(d) Forbe's method

32. Which of the following is a clay type of emulsifying agent

- (a) Xanthine (b) Vee gum
(c) Carbopol (d) CMC

33. Hot stage microscopy is a tool for the study of

- (a) Pseudo polymorphism
(b) Particle size measurement
(c) Microbial contamination
(d) Compaction behaviour

34. Match the following

Drug	Influence of food on drug absorption
1. Aspirin	[P] Decreased
2. Erythromycin	[Q] Delayed
3. Griseofulvin	[R] Unaffected
4. Methyldopa	[S] Increased

- (a) 1-[Q], 2-[P], 3-[S], 4-[R]
(b) 1-[P], 2-[Q], 3-[S], 4-[R]
(c) 1-[P], 2-[Q], 3-[R], 4-[S]
(d) 1-[P], 2-[R], 3-[S], 4-[Q]

35. Which marker is used for measuring the volume of plasma

- (a) Deuterium oxide (b) Mannitol
(c) Evan blue (d) Inulin

Pharmacology

36. What is the name of the tissues which helps in protection and support of the body

- (a) Muscular tissue (b) Nervous tissue
(c) Connective tissue (d) Epithelial tissue

37. Which of the following drugs can cause Torsade de pointes

- (a) Quinidine (b) Lignocaine
(c) Esmolol (d) Flecainide

38. Pulmonary fibrosis is the most common complication after treatment with

- (a) 6- Mercaptopurine (b) Vincristine
(c) Bleomycin (d) Adriamycin

39. "Vaginal carcinoma in teenage female offspring's" abnormality observed in

- (a) Methotrexate (b) Progestin
(c) Stilbesterol (Diethylstilbesterol) (d) Androgens

40. Wolff-chai koff effect is

- (a) Reduced thyroxine synthesis by radiotherapy
(b) Reduced thyroxine synthesis by propylthiouracil
(c) Reduced thyroxine synthesis by iodides
(d) None of these

41. Mannitol is not used in

- (a) Acute renal failure (b) Pulmonary edema
(c) Cerebral edema (d) All of these

42. Digitalis given to atrial flutter often produces

- (a) Atrial fibrillation (b) Atrial tachycardia
(c) Atrial asystole (d) Atrial bigeminy

43. **What is the type of inhibition of acetylcholinesterase cause by organophosphates**
 (a) Competitive, reversible
 (b) Non-competitive, irreversible
 (c) Uncompetitive, reversible
 (d) Competitive, irreversible
44. **HIV may NOT respond to**
 (a) Nucleoside analogues (b) Protease inhibitors
 (c) Neuraminidase inhibitors (d) Reverse transcriptase
45. **Which of the following is a GLP-1 agonist**
 (a) Sitagliptin (b) Pramiltide
 (c) Exenatide (d) Eparlrestat
46. **PDE-IV enzyme inhibitor agent used in the treatment of asthma**
 (a) Roflumilast (b) Amoxicillin
 (c) Salbutamol (d) Montelukast
47. **Which antifungal acts by non-competitive inhibition of squalene epoxidase there by inhibition of ergosterol synthesis**
 (a) Caspofungi (b) Amphotericin
 (c) Terbinafine (d) Ketoconazole
48. **Which of the following is selective α_1 selective antagonist**
 (a) Clonidine (b) Prazosin
 (c) Phentolamine (d) Yohimbine
49. **Aromatase is an enzyme complex that is the target for several anticancer drugs. Which of the following anticancer drugs targets aromatase**
 (a) Cyproterone acetate (b) Raloxifene
 (c) Aminoglutethimide (d) Testosterone propionate
50. **Hepatic toxicity in paracetamol is caused due to an active metabolite. It is**
 (a) N-acyl-p-benzoquinone mine (NAPQT)
 (b) N-acetyl-p- benzoquinone mine (NAPQI)
 (c) N-aryl-p-benzoquinone mine (NAPQI)
 (d) N-alkyl-p-benzoquinone mine (NAPQI)
51. **Lorcaserin is used as**
 (a) Anti-anxiety (b) Anti-smoking
 (c) Anti-helminthic (d) Anti-obesity
52. **Which of the following is correctly matched**
 (a) Dimercaprol Iron
 (b) Calcium Di-sodium EDTA Arsenic
 (c) Penicillamine Copper
 (d) Deferoxamine Lead
53. **The agent that can only be given intravenously for heart failure is**
 (a) Digoxin (b) Amiodarone
 (c) Quinidine (d) Dobutamine
54. **Identify the GABA reuptake inhibitor**
 (a) Progabide (b) Tiagabine
 (c) Bicuculline (d) Baclofen
55. **The increase in concentration of second messengers (CAMP, cGMP, Ca^{2+} etc) leads to**
 (a) Inhibition of intracellular protein kinases and protein phosphorylation
 (b) Protein kinases activation and protein phosphorylation
 (c) Blocking of interaction between a receptor and an effector
 (d) Antagonism with endogenous ligands
56. **The following may be used in erectile dysfunction EXCEPT**
 (a) Phenylephrine (b) Sildenafil
 (c) Alprostadil (d) PGE, analogues
57. **Which part of internal ear receives sound waves in man**
 (a) Cochlea (b) Lagena and utriculus
 (c) Ampullae and utriculus (d) None of these
58. **All of the anabolic steroids are effective orally EXCEPT**
 (a) Stanozolol (b) Methandienone
 (c) Nandrolone (d) Oxymetholone
59. **Drug of choice for smoking cessation**
 (a) Varenicline Which one of the (b) Duloxetine
 (c) Acamprosate (d) Chlordiazepoxide
60. **following is used in the Ames test**
 (a) Pseudomonas syringae
 (b) Streptococcus aureus
 (c) Pseudomonas aerogenosa
 (d) Salmonella typhimurium
61. **The drug used during the preoperative preparation for surgical excision of pheochromocytoma is**
 (a) Atenolol (b) Phenoxybenzamine
 (c) Reserpine (d) Clonidine
62. **The pacemaker potential is due to**
 (a) Fast Na^+ channel
 (b) Decrease in K^+ permeability
 (c) Slow Ca^{++} channel
 (d) Rapid repolarization
63. **N-acetyl cysteine is beneficial in acute paracetamol poisoning because**
 (a) It reacts with paracetamol to form a nontoxic complex
 (b) It inhibits the generation of the toxic metabolite of paracetamol
 (c) It is a free radical scavenger
 (d) It replenishes hepatic glutathione, stores which in turn binds the toxic metabolite of paracetamol
64. **An example of a major drug-drug interaction would be**
 (a) Warfarin-Aspirin (b) Digoxin-Diltiazem
 (c) Penicillin-Cephalexin (d) Hydrocodone-Codeine
65. **Hofmann elimination is seen in**
 (a) Atracurium (b) Pancuronium
 (c) d-TC (d) Vecuronium
66. **Paclitaxel acts on which phase of cell cycle**
 (a) G_1 (b) S (c) G_2 (d) M
67. **Which of the following is species is being inactivated by the enzyme dipeptidyl peptidase**
 (a) Oxytocin (b) Incretin
 (c) Vasopressin (d) Glucagon
68. **_____ is the emergency contraceptive**
 (a) Levonorgestrel
 (b) Misoprostol
 (c) Norethindron
 (d) Estradiol

69. The Vd for phenytoin is 70 L and half-life is 1.5 hours.

What is the total clearance of phenytoin

- (a) 34.32 L/hr (b) 32.34 L/hr
(c) 0.49 L/hr (d) 51.51 L/hr

70. Not a hepatotoxic drug

- (a) Chlorpropamide (b) Allopurinol
(c) Streptomycin (d) Halothane

Pharmacognosy

71. Identify the mismatched pair

- (a) Hydathodes Piper betel (b) Aril lode- Cardamom
(c) Caruncle Belladonna (d) Strophiole- Colchicum

72. In callus culture, roots can be induced by the supply of

- (a) Auxin and no cytokinin
(b) Higher concentration of auxin and lower concentration of cytokinin
(c) Higher concentration of cytokinin and lower concentration of auxin
(d) Auxin and cytokinin in equal proportions

73. Atropine is

- (a) Optically active (b) Optically inactive
(c) Partially active (d) Partially inactive

74. What are known as balsams

- (a) Resins dissolved in volatile oil
(b) A mixture of volatile oils with sesquiterpenes
(c) Solidified resin devoid of volatile terpenes
(d) Polysaccharide mixed with volatile oil

75. Which of the following ergot alkaloids is water soluble and shows blue fluorescence

- (a) Ergosine (b) Ergotamine
(c) Ergocristine (d) Ergometrine

76. Which of the following chemical constituents in fennel is in a phenolic group

- (a) Anethole (b) Fenchone
(c) Eugenol (d) Carvonol

77. Thalleoquin test is for which of the following alkaloids

- (a) Barbaloin (b) Allopurinol
(c) Cinchona (d) Theobromine

78. Identify the wrong statement regarding mucilage

- (a) They are normally sulphuric acid esters
(b) They are the normal products of the cell
(c) They are produced by injury to plant
(d) The ester group is a complex polysaccharide

79. Which one of the following is NOT a protoplast fusion agent

- (a) Inactivated Sendai Virus (b) Ca^{++} at alkaline pH
(c) Polyethylene glycol (d) Colchicine

80. Isothiocyanate glycosides are prominent in family

- (a) Cruciferae (b) Liliaceae
(c) Rosaceae (d) Apocyanaceae

81. Types of fluorescence in UV light shown by Indian Rhubarb is

- (a) Deep violet (b) Blue (c) Yellow (d) Deep red

82. "May apple" plant do possess

- (a) Anti-ulcer (b) Purgative
(c) Hypoglycaemic (d) Anti-cancer

83. The monohydric alcohol present in Ashwagandha is

- (a) Anolide (b) Sorbitol
(c) Somital (d) Withanolide D

84. Sunken stomata is the characteristic features of

- (a) Ephedra (b) Colchicum
(c) Lobelia (d) Senna

85. Which of the following drug is sesquiterpene containing roots

- (a) Brahmi (b) Satavari (c) Valerian (d) Adusa

86. Asafoetida + Nitric acid gives

- (a) Reddish-brown colour (b) Green colour
(c) Yellowish-orange colour (d) Blue fluorescence

Pharmaceutical Chemistry

87. Le Chatelier's principle states that increasing temperature favours a reaction that

- (a) Release energy as heat
(b) Requires energy as heat
(c) Involves a chemical catalyst
(d) Gluconeogenesis

88. Which of the following has least polarity in bond

- (a) H-F (b) H-Cl (c) H-O (d) H-S

89. Which one is di phenyl butyl piperidine derivative atypical antipsychotic agent

- (a) Molindone (b) Haloperidol
(c) Pimozide (d) Thioridazine

90. p-nitro benzaldehyde and acetone to form 1-(4-nitro-phenyl-3-oxo-butene) is known

- (a) Michael condensation
(b) Claisen Schmidt condensation
(c) Alol condensation
(d) Claisen condensation

91. Clinically used Labetalol is

- (a) S, S (b) R, R (c) R, S (d) S, R

92. The positively polarized carbon atom of a carbonyl group acts as

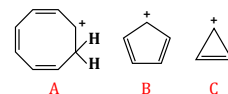
- (a) An electrophile and Lewis's base
(b) A nucleophile and Lewis's acid
(c) A nucleophile and Lewis's base
(d) An electrophile and Lewis's acid

93. Which of the following is an optically active compound

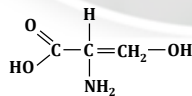
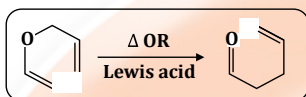
- (a) 1-Butanol (b) 1-Propanol
(c) 2-Chloro butane (d) 4-Hydroxy heptane

94. Among the carbocation given below

- (a) A is homoaromatic, B is Antiaromatic and C is aromatic
(b) A is Antiaromatic, B is homoaromatic and C is aromatic
(c) A is aromatic, B is Antiaromatic and C is homoaromatic
(d) A is homoaromatic, B is homoaromatic and C is aromatic



95. The activity of which of the following drug is dependent upon a p-phenyl-N-alkyl Piperidine moiety
 (a) Phenobarbital (b) Meperidine
 (c) Imipramine (d) Chlorpromazine
96. The Selective H_2 - receptor antagonist agent should possess _____ for its minimum activity in its structure.
 (a) Phenol (b) Imidazole
 (c) Naphthalene (d) Quinoxaline
97. One of the following drug contains furan ring
 (a) Cimetidine (b) Famotidine
 (c) Ranitidine (d) Nizatidine
98. Which has most of acidic strength
 (a) CH_2-OH (b) CH_3CH_2-OH
 (c) $CH_3-CH_2-CH_2-OH$ (d) $CH_3-CH_2-CH_2-CH_2-OH$
99. Which of the following is the name reaction of the given reaction
 (a) Wolff's rearrangement
 (b) Favorskii rearrangement
 (c) Pinacol rearrangement
 (d) Chisen rearrangement
100. Which of the following statements is true about ammonia and water
 (a) Ammonia is more basic and more nucleophilic than water
 (b) Ammonia is less basic and less nucleophilic than water
 (c) Ammonia is more basic but less nucleophilic than water
 (d) Ammonia is less basic but more nucleophilic than water
101. The reaction of Grignard reagent with aldehydes and ketones gives alcohols. This is known as
 (a) Nucleophilic addition reaction
 (b) Nucleophilic substitution reaction
 (c) Electrophilic substitution reaction
 (d) Electrophilic addition reaction
102. All the compounds have the molecular formula C_4H_8 , the one which will show geometrical isomerism is
 (a) $H_3C-CH=CH-CH_3$ (b) $H_3C-C=CH_2$
 (c) $C_2H_5-CH=CH_2$ (d) $H_3C-CH_2-CH=CH_2$
103. What is the IUPAC name of the compound having the structural formula
 (a) 3-Amino-2-hydroxypropanoic acid
 (b) 2-Amino-propan-3-ol-1-oic acid
 (c) Amino hydroxy propanoic acid
 (d) 2-Amino-3-hydroxypropanoic acid
104. Electron pair of the pi bond is moved towards the attacking reagent due to
 (a) +E effect (b) +I effect (c) -E effect (d) -I effect
105. The rate of reaction is determined by slow step reaction. The step is called
 (a) Reaction rate (b) Activation step
 (c) Rate determining step (d) None of these
106. Which one of the following is acid stable
 (a) Erythromycin stearate
 (b) Erythromycin ethyl succinate
 (c) Erythromycin estolate
 (d) All of these



107. Thiotepa undergoes oxidative desulphuration forming an active cytotoxic metabolite
 (a) Mon ethylene phosphor amide
 (b) Diethylene phosphor amide
 (c) Tri ethylene phosphor amide
 (d) None of these
108. Any series of operations so carried out that at the end, the system is back to its initial state is called
 (a) Boyle's cycle (b) Reversible process
 (c) Adiabatic process (d) Cyclic process

Pharmaceutical Analysis

109. On & scale the position of TMS signal is taken as
 (a) 0.0 ppm (b) 0.2 ppm (c) 2.0 ppm (d) 10.0 ppm
110. Brockman activity Scale' is used in the characterization of
 (a) Stationary phase (b) Mobile Phase
 (c) Buffer System used (d) Column specification
111. Purity of water can be assessed by determining one of its following properties instrumentally
 (a) Conductivity (b) pH
 (c) Refractivity (d) Viscosity
112. Karplus curve is associated with which spectroscopy
 (a) UV (b) Mass (c) FTIR (d) NMR
113. Phenobarbitone Sodium Tablets is officially assayed by
 (a) Acidimetry (b) Precipitation titrations
 (c) Redox titration (d) Gravimetric
114. If an organic compound does not absorb UV visible radiation it means compound does not contain _____
 (a) Single bond (b) Sigma bond
 (c) Conjugated double bond (d) Dative bond
115. Polarographic method of analysis to obtain individual amounts of Cu^{2+} and Cd^{2+} in a given mixture of the ions (Cu^{2+} and Cd^{2+}) is achieved by measuring them
 (a) Half way potentials (b) Migration currents
 (c) Decomposition potentials (d) Diffusion currents
116. The technique in which the change in weight of the substance is recorded as a function of temperature or time is
 (a) Ignition (b) TGA (c) Incineration (d) DTA
117. Kjeldahl analysis is an acid-base titrimetric method for determining the amount of _____ in organic compounds
 (a) Water (b) Carbon
 (c) Nitrogen (d) Sulphur

Other Subjects

118. Which of the following criteria should be considered when reviewing a medication for addition to the hospital formulary
 (a) The amount of samples provided to hospital physician
 (b) Research funds donated to the hospital by the pharmaceutical company

- (c) National adverse drug reaction reports
(d) Whether is a gluten-free oral formulation

119. Deoxy position of deoxyribose in DNA is a

- (a) 1st carbon (b) 2nd carbon
(c) 3rd carbon (d) 5th carbon

120. Vitamin K is constituted of _____ ring

- (a) Hydroquin (b) Naphthoquinone
(c) Benzopyrone (d) Den imidazole

121. A compound with an-OH group and -OR group bonded to the same carbon atom is

- (a) An acetal (b) A hemiacetal
(c) A simple ether (d) An akkol

122. Which of the following is true about Michaelis-Menten kinetics

- (a) K_m , prime the Michaelis constant, is defined as that concentration of substrate at enzyme is working at maximum velocity
(b) It describes single substrate enzyme
(c) K_m , the Michaelis constant is defined as the dissociation constant of them enzyme-substrate complex
(d) It assumes covalent binding occurs between enzyme and substrate

123. Which of the following cell types are responsible for initiating a secondary immune response

- (a) Memory cells (b) Macrophages
(c) Stem cells (d) B cells

124. Upon Ziehl Nelsen staining the acid-fast bacteria appears in which colour

- (a) Blue colour (b) Green colour
(c) Violet colour (d) Red colour

125. A set of closely related genes of generic markers that are inherited as a single unit is

- (a) Cistron (b) Gene families
(c) Haplotype (d) Haploid

Answer Key

1-c	2-d	3-d	4-b	5-a	6-c	7-a	8-c	9-c	10-b
11-c	12-a	13-d	14-a	15-c	16-a	17-c	18-c	19-a	20-a
21-d	22-b	23-d	24-c	25-a	26-c	27-d	28-c	29-d	30-a
31-a	32-b	33-a	34-a	35-c	36-c	37-a	38-c	39-c	40-c
41-d	42-a	43-d	44-c	45-c	46-a	47-c	48-d	49-c	50-b
51-d	52-c	53-d	54-b	55-b	56-a	57-a	58-c	59-a	60-d
61-b	62-b	63-d	64-a	65-a	66-d	67-d	68-a	69-b	70-c
71-c	72-b	73-b	74-a	75-d	76-a	77-c	78-c	79-d	80-a
81-a	82-d	83-c	84-a	85-c	86-b	87-b	88-d	89-c	90-b
91-b	92-d	93-c	94-a	95-b	96-b	97-c	98-a	99-d	100-a
101-a	102-a	103-d	104-a	105-c	106-c	107-c	108-d	109-a	110-a
111-a	112-d	113-d	114-c	115-d	116-b	117-c	118-c	119-b	120-b
121-b	122-b	123-a	124-d	125-c					





COD AVAILABLE ON

Flipkart



amazon

meesho



GATE- 1988-2009, GPAT- 2010-2025


GPAT PLUS

TOTAL 38 SET QUESTIONS PAPERS

4000+ Questions with Digital Explanation

38

PREVIOUS YEAR PAPER



FEATURES // Based on Latest GPAT Syllabus // Designed by Experts

Subject Wise Division // Verified Questions // Digital Explanation

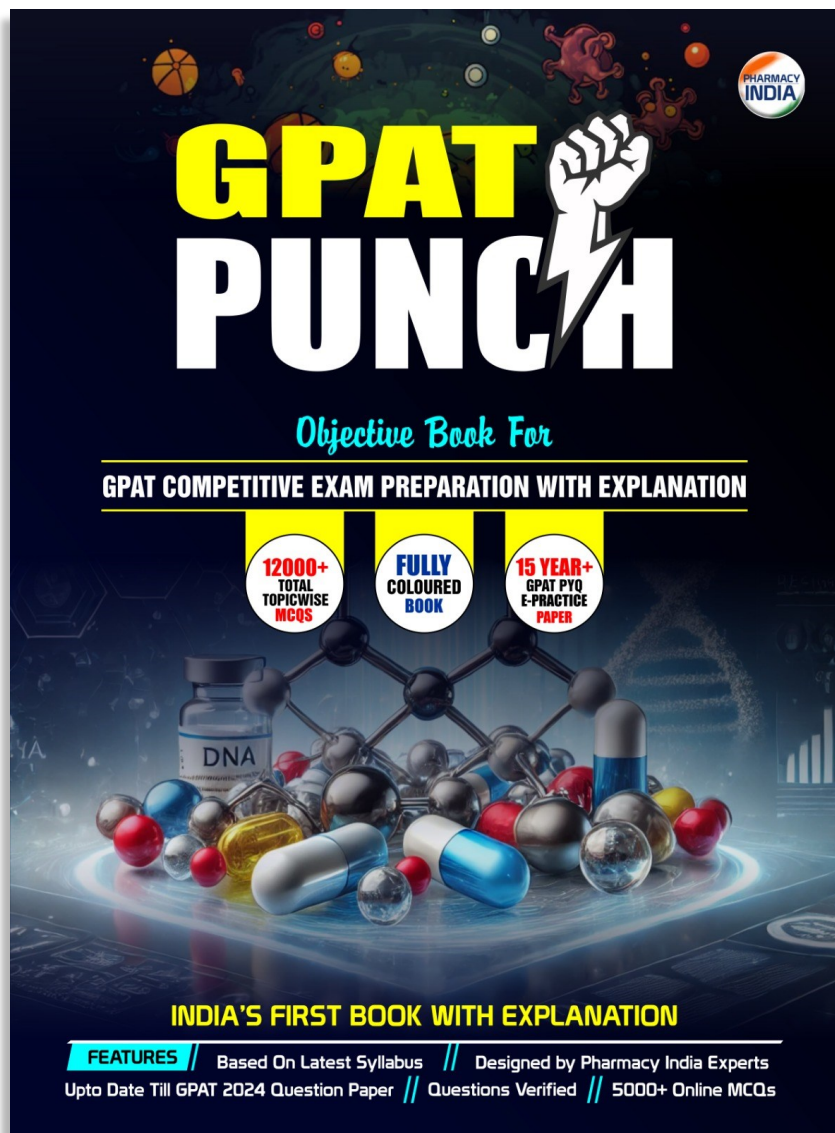
 **Contact for any Query - 6395596959**



PHARMACY INDIA
www.pharmacyindia.co.in



BEST BOOK FOR GPAT PREPATRATION



: Features :

- ⇒ 12,000+ Total Topic-wise MCQs
- ⇒ 15 Year+ GPAT PYQs E- Practice Papers
- ⇒ Full Digital Explanation
- ⇒ Based on Latest Syllabus
- ⇒ Fully Colored Book
- ⇒ India's First Book With Explanation



Download

COD AVAILABLE

amazon

Flipkart 



Contact for

Sample Pdf - 9258534641

PHARMACY INDIA



Join

WhatsApp & Telegram Channel



PHARMACY INDIA

www.pharmacyindia.co.in



Tap and Download PHARMACY INDIA App



Scan and Download

SCAN ME



PHARMACY INDIA

www.pharmacyindia.co.in