

# GPAT-2024

## Pharmaceutics

- Coating of Eudragit NE40D on tablets is done to prepare**  
(a) Buccal tablets (b) Sublingual tablets  
(c) CR tablets (d) IR tablets
- Examples of BCS class III drugs are**  
(a) Taxol, Ellagic acid, Aspirin  
(b) Chloroquine, Diltiazem, Metoprolol  
(c) Acyclovir, Atenolol, Captopril  
(d) Aspirin, Paracetamol, Amoxycillin
- Schedule T of Drugs and Cosmetics Rules, 1945 deals with**  
(a) GMP for Homeopathy medicine  
(b) GMP for ASU drugs  
(c) GLP and requirement of premises and equipments  
(d) GMP for Pharmaceutical product
- During compression of tablets, dwell time is**  
(a) Time it takes for the punches to eject tablet under the primary compression rollers  
(b) Time it takes for the punches to eject the tablets  
(c) Time it takes for the punches to stop moving vertically and to achieve maximum penetration in the die under the primary compression rollers  
(d) Time it takes for the punches to punch tablet
- Which of the following is NOT a method for solubility enhancement**  
(a) Crystallization (b) Co-solvency  
(c) Hydrotropy (d) Salt formation
- The bloom strength is directly proportional to**  
(a) Density  
(b) Viscosity  
(c) Measure of the strength and stiffness of the gelatin  
(d) Molecular weight
- Size of a pilot plant batch is**  
(a) 1/10th of marketing batch  
(b) 1/5th of marketing batch  
(c) 1/5th of production batch  
(d) 1/10th of production batch
- Nitrostat® is an example of**  
(a) Effervescent tablet (b) Bolus tablet  
(c) CR tablet (d) Sublingual tablet
- The rate limiting step for the absorption of controlled release tablet is the**  
(a) Dissolution of the drug (b) Excretion of the drug  
(c) Metabolism of the drug (d) Distribution of the drug
- Core tablet coated with cellulose acetate phthalate has been administered to a patient. Where do you expect the drug to be released**  
(a) Stomach (b) Intestine  
(c) Liver (d) Oral cavity
- Based on the rheological behavior of fluid, all of the following shows time independent property, EXCEPT**  
(a) Anti-thixotropic (b) Non-newtonian  
(c) Plastic (d) Pseudoplastic
- \*An elixir contains 47%v/v alcohol, what is the proof spirit according to USP [Dropped Question]**  
(a) 82% (b) 70% (c) 63% (d) 91%
- Which of the following protective colloids has high gold number**  
(a) Tragacanth (b) Albumin  
(c) Acacia (d) Gelatin
- Which of the following mills is based on the mechanism of impact and attrition for size reduction**  
(a) Roller mill (b) Colloid mill  
(c) Hammer mill (d) Fluid energy mill
- Which of the following climatic zones can be categorized into the hot and dry zone**  
(a) Zone-IV (b) Zone-II (c) Zone-III (d) Zone-I
- Antioxidant which is obtained from a desert plant and shows synergistic action with citric acid is**  
(a) Tocopherols (b) Maleic acid  
(c) Nordihydroguaiaretic acid (NDGA) (d) BHA
- Which of the following type of viscometer is used for the measurement of viscosity of a Newtonian fluid**  
(a) Cup and bob viscometer (b) Pycnometer  
(c) Ostwald viscometer (d) Brookfield's viscometer
- Which of the following is/are in-process QC test(s) for tablets**  
(a) Dissolution Test  
(b) Drug content, Puncture Test  
(c) Zeta-sizing Test  
(d) Hardness, Friability, Average weight
- Central Government approved factory premises where Opium alkaloids are processed is situated at**  
(a) Ghazipur and Kota  
(b) New Delhi and Ghaziabad  
(c) Neemuch and Ghazipur  
(d) Gwalior and Kota
- Who has the power to fix the ceiling price of scheduled formulations**  
(a) National Pharmaceutical Pricing Authority  
(b) Director General Health Services  
(c) National Medical Commission  
(d) Pharmacy Council of India
- How many Pharmacists are required for a hospital having up to 300 beds**  
(a) 15 (b) 8 (c) 10 (d) 5

22. Which of the following equipment measures weight variation using reflected energy

- (a) Rotofill (b) Vericap-1200  
(c) Rotoweigh (d) Rotosort

23. Which among the following is an example of high shear mixer

- (a) Sigma blade mixer (b) Turbine mixer  
(c) Jet mixer (d) Nauta mixer

24. The term of a patent granted under Indian Patent's Act is

- (a) 40 Years (b) 10 Years (c) 30 Years (d) 20 Years

25. This given equation represents which law

- (a) Rittinger's law  
(b) Kick's law  
(c) Fick's law  
(d) Bond's law

$$E = K_k \ln \frac{d_1}{d_2}$$

26. Which of the following is a correct expression of average particle size with value of  $p = 1$  i.e. index related to the size of an individual particle and frequency index ( $f=2$ )?

$$d_{ln} = \frac{\sum nd^2}{\sum nd^3} \quad d_{ln} = \frac{\sum nd^3}{\sum nd^2} \quad d_{sl} = \frac{\sum nd^2}{\sum nd^3} \quad d_{sl} = \frac{\sum nd^3}{\sum nd^2}$$

- (a) D (b) C (c) B (d) A

27. In Michaelis-Menten equation when  $K_m = C$

- (a) Indicates zero-order process  
(b) The rate process occurs at a constant rate  
(c) Equation becomes identical to first order elimination of drug  
(d) The rate of process is equal to half of maximum rate

28. Which of the following formula for calculating child dose is based on body weight

- (a) Young's formula (b) Clark's formula  
(c) Fried's formula (d) Dilling's formula

29. Which of the following is an example of physical incompatibility

- (a) Error in dosage form (b) Alkaloidal incompatibility  
(c) Drug interaction (d) Liquefaction

30. In drying process, which of the following parameters is same as the adiabatic saturation temperature

- (a) Wet bulb temperature (b) Dew point  
(c) Absolute humidity (d) Relative humidity

31. What should be the log P value for an ideal drug candidate for transdermal permeation

- (a) Above 7 (b) 1-3 (c) 5-7 (d) Below 1

32. Which among the following is NOT the process of drug degradation

- (a) Hydrolysis (b) Decarboxylation  
(c) Photolysis (d) Hemolysis

- important for the inhibition of hemozoin formation  
(b) Withdrawing group at 6th position of the quinoline ring is important for the inhibition of hemozoin formation  
(c) Donating group at 7th position of the quinoline ring is important for the inhibition of hemozoin formation  
(d) Withdrawing group at 7th position of the quinoline ring is important for the inhibition of hemozoin formation

33. Spin Quantum number of  $^{13}\text{C}$  NMR is

- (a) 1/4 (b) 3/2 (c) 1/3 (d) 1/2

34. The starting raw material for synthesis of Lignocaine is

- (a) 4-Chlorobenzyl cyanide (b) 2,6-Xylidine  
(c) p-Nitroacetophenone (d) 4-Amino-3-Nitroanisole

35. Which of the following is a meta directing group

- (a)  $\text{NHCH}_3$  (b)  $\text{CF}_3$  (c) F (d)  $\text{NH}_2$

36. Famotidine contains

- (a) Pyrrole ring (b) Furan ring  
(c) Imidazole ring (d) Thiazole ring

37. Which of the following steps are NOT involved in gravimetric analysis

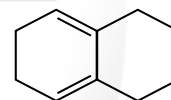
- (a) Filtration (b) Precipitation  
(c) Indicator (d) D

38. Which of the following steps are NOT involved in gravimetric analysis

- (a) Filtration (b) Precipitation  
(c) Indicator (d) Digestion

39. Calculate the  $\lambda_{\text{max}}$  of the following molecule

- (a) 273 nm  
(b) 283 nm  
(c) 244 nm  
(d) 234 nm

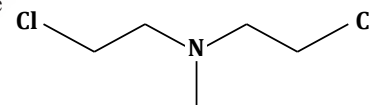


40. The IUPAC name of tartaric acid is

- (a) 2,3-dihydroxybutane-1,4-dioic acid  
(b) 2,3-dihydroxy-4-butanoic acid  
(c) 1,3-dihydroxybutane-1,4-dioic acid  
(d) 2,2-dihydroxy-4-butanoic acid

41. Name the following drug molecule

- (a) 6-Mercaptopurine  
(b) Chlorambucil  
(c) Mechlorethamine  
(d) Vincristine



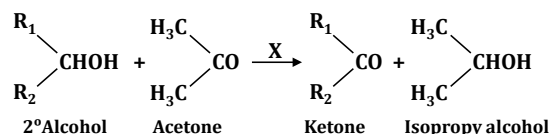
42. The equivalent weight of Potassium permanganate in acidic medium is

- (a) 31.6 (b) 41.6 (c) 51.6 (d) 21.6

43. The composition of "Lindlar catalyst"

- (a)  $\text{NH}_2\text{NH}_2$  and KOH  
(b) Palladium with Sodium carbonate  
(c) Palladium with calcium carbonate  
(d) Amalgamated Zinc and HCl

44. According to Oppenauer oxidation reaction, oxidation of secondary alcohol to ketone by reagent (X) in acetone takes place, what is X

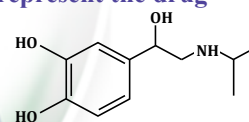


## Pharmaceutical Chemistry

1. According to the SAR of Chloroquine electron

- (a) Donating group at 6th position of the quinoline ring is

- (a) Aluminium t- butoxide  
(b) Amalgamated Zinc & Conc. HCl  
(c) Aluminium Hydroxide  
(d) Conc. H<sub>2</sub>SO<sub>4</sub>
45. Which of the following drug is having a 1,3,4-thiadiazole ring system  
(a) Spironolactone (b) Dichlorophenamide  
(c) Acetazolamide (d) Furosemide
46. 5-Fluorouracil, an anti-metabolite used in cancer treatment, is activated to  
(a) 5-fluoro-2- oxyuridylic acid  
(b) 5-fluoro-2- deoxyuridylic acid  
(c) 3-fluoro-3- oxyuridylic acid  
(d) 3-fluoro-3- deoxyuridylic acid
47. \* Which of the following is an aryl acetic acid derivative [Dropped Question]  
(a) Salsalate (b) Aspirin  
(c) Ibuprofen (d) Mefenamic acid
48. Which ionization technique in mass spectrometry is most suitable for large biomolecules like proteins  
(a) Physical Ionization (PI)  
(b) Electron Impact (EI)  
(c) Electrospray Ionization (ESI)  
(d) Chemical Ionization (CI)
49. Precursor for corticosteroids synthesis is  
(a) 1,2-Cyclopentophenanthrene  
(b) Phenanthrene  
(c) Cholesterol  
(d) 1,2-Cyclopentodihydrophenanthrene
50. Which ring of warfarin is essential for its therapeutic activity  
(a) Lactone (b) Pyrimidine  
(c) Coumarin (d) P
51. Biological activity of synthetic adrenaline is almost  
(a) 25% of R-adrenaline  
(b) 50% of S-adrenaline  
(c) 25% of S-adrenaline  
(d) 50% of Natural R-adrenaline
52. Tetracycline undergoes epimerization at C4 between pH 4-8 to give  
(a) Epitetracycline (b) Nortetracycline  
(c) Isotetracycline (d) Doxycycline
53. Which functional group in drug molecules is most likely to undergo phase I metabolic oxidation by cytochrome P450 enzymes  
(a) Methyl group (b) Amide group  
(c) Hydroxyl group (d) Ester group
54. How many optical isomers are possible for lactic acid  
(a) 2 (b) 6 (c) 0 (d) 4
55. As per Bronsted-Lowry concept, acid is defined as  
(a) Electron pair acceptor  
(b) Any substance/molecule that can donate a proton  
(c) Any substance/molecule that can accept a proton  
(d) Electron pair donor
56. Partial hydrogenation of vegetable oils in the presence of Ni catalyst at 200°C gives  
(a) Butter (b) Cheese  
(c) Margarine (d) Vanaspati ghee
57. Among the following which is known as "SPIRIT OF SALT"  
(a) Hydrochloric acid (b) Nitric acid  
(c) Thioglycolic acid (d) Boric acid
58. If the spin of the electrons in the excited state are parallel, it is called as  
(a) Triplet state (b) Parallel state  
(c) Doublet state (d) Singlet state
59. Choose the INCORRECT statement regarding Cathode rays  
(a) Cathode rays are fast electrons  
(b) Cathode rays are electromagnetic waves  
(c) Cathode rays travel in straight route  
(d) Cathode rays produce X-rays
60. Which of the following is easily nitrated using a mixture of HNO<sub>3</sub> and H<sub>2</sub>SO<sub>4</sub>  
(a) Toluene (b) Nitrobenzene  
(c) Chlorobenzene (d) Fluorobenzene
61. In a homologous series of any general anesthetic, increasing the chain length increases the lipid solubility, and produce a corresponding increase in anesthetic potency, is proposed by  
(a) Meyer - Philip (b) Hubert Humphrey  
(c) John Pemberton (d) Meyer – Overton
62. In which limit test, Thioglycolic acid is used  
(a) Limit test for arsenic (b) Limit test for iron  
(c) Limit test for sulphate (d) Limit test for chloride
63. The below structure represent the drug  
(a) Salbutamol  
(b) Amphetamine  
(c) Norepinephrine  
(d) Isoprenaline



### Pharmacology

64. The Wilson's disease is a rare inherited disorder due to accumulation in brain, liver and other vital organs of  
(a) Iodine (b) Calcium (c) Iron (d) Copper
65. Which antibiotic undergoes light catalysed autooxidation  
(a) Sugar derived antibiotics (b) Polyene antibiotics  
(c) Macrolide antibiotics (d) Beta lactum antibiotics
66. Which of the following is Phase-II metabolism reaction  
(a) Acetylation (b) Oxidation  
(c) Reduction (d) Hydrolysis
67. Which is the active form of Ganciclovir  
(a) Triphosphate (b) Biphosphate  
(c) Tetraphosphate (d) Phosphate
68. H1 receptor protein in humans is made up of  
(a) 359 Aminoacids  
(b) 445 Aminoacids  
(c) 487 Aminoacids  
(d) 390 Aminoacids



69. Which of the following is first prodrug for sulfonamide  
(a) Sulfatrim (b) Sulfamidochrysodine  
(c) Trimethoprim (d) Prontosil
70. The appendicular skeleton in an adult consists of  
(a) 120 bones (b) 206 bones  
(c) 80 bones (d) 126 bones
71. Which of the following hormone is NOT secreted by human placenta  
(a) hCG (b) LH  
(c) Estrogen (d) Progesterone
72. Melatonin is secreted by  
(a) Thyrotrophs (b) Adrenal gland  
(c) Pineal gland (d) Gonadotrophs
73. Which oral hypoglycemic agent increases the levels of incretin hormone by inhibiting the enzyme dipeptidyl peptidase-4 (DPP-4)  
(a) Metformin (b) Sitagliptin  
(c) Glipizide (d) Pioglitazone
74. The etiology of jaundice could be haemolytic anaemia if  
(a) Unconjugated bilirubin is found more than conjugated bilirubin  
(b) Increase in IgE level  
(c) Conjugated bilirubin is found more than unconjugated bilirubin  
(d) Unconjugated bilirubin is found equal to conjugated bilirubin
75. Murmurs are generally heard in disorders affecting the following  
(a) Heart valves (b) AV nodes  
(c) Pulmonary vein (d) SA nodes
76. Which of the following drug does NOT require therapeutic drug monitoring  
(a) Acetaminophen (b) Phenytoin  
(c) Digoxin (d) Gentamicin
77. Which hormone stimulates red blood cell production  
(a) Erythropoietin (b) Prolactin  
(c) Vasopressin (d) Erythrocytin
78. Following are the examples of negative feedback system EXCEPT  
(a) Blood glucose maintenance  
(b) Blood pressure maintenance  
(c) Blood clotting  
(d) Body temperature regulation
79. Which of the following is called as cell-mediated (delayed) hypersensitivity  
(a) Type II hypersensitivity  
(b) Type I hypersensitivity  
(c) Type III hypersensitivity  
(d) Type IV hypersensitivity
80. Enzyme commonly targeted by drugs to treat hypertension is  
(a) Monoamine oxidase (MAO)  
(b) Angiotensin-converting enzyme (ACE)  
(c) HMG-CoA reductase  
(d) Cyclooxygenase (COX)
81. Which of the following is NOT a GABA derivative  
(a) Pregabalin (b) Vigabatrin  
(c) Gabapentin (d) Rufinamide
82. Which of the following is peroxisome proliferator-activated receptor-alpha (PPAR- $\alpha$ ) agonist  
(a) Niacin (b) Ezetimibe  
(c) Colesevelam (d) Gemfibrozil
83. Plasma protein bound drugs are  
(a) Pharmacodynamically inert  
(b) Pharmacokinetically inert  
(c) Pharmacodynamically active  
(d) Pharmacokinetically and Pharmacodynamically inert
84. The short acting anticholinesterase drug is  
(a) Neostigmine (b) Edrophonium  
(c) Echothiophate (d) Physostigmine
85. Two drugs producing the same clinical effects and safety profile when administered to patients are considered  
(a) Minimum Effective Concentration (MEC)  
(b) Therapeutic equivalent  
(c) Minimum Toxic Concentration (MTC)  
(d) Therapeutic window
86. Match the following antibodies with their CORRECT description
- | Antibody | Description   |
|----------|---|
| P. IgE   | (I) Cross the placenta  |
| Q. IgG   | (II) Dominant antibody produced in immune responses           |
| R. IgM   | (III) It is found in the mother's milk                        |
| S. IgA   | (IV) Responsible for autoimmune responses including allergies |
- (a) P-(IV), Q-(II), R-(III), S-(I)  
(b) P-(I), Q-(III), R-(II), S-(IV)  
(c) P-(IV), Q-(I), R-(II), S-(III)  
(d) P-(I), Q-(II), R-(III), S-(IV)
87. Progressive loss of bone that occurs in osteoporosis is an example of  
(a) Hypertrophy (b) Hyperplasia  
(c) Metaplasia (d) Atrophy
88. The visible coloured ring of the eye is called  
(a) Lens (b) Iris (c) Cornea (d) Retina
89. Which of the following is a Partial Fatty acid oxidation (pFox) inhibitor  
(a) Atosiban (b) Nicardipine  
(c) Trimetazidine (d) Verapamil
90. Outer Covering of the testes is  
(a) Tunica media (b) Tunica vaginalis  
(c) Tunica vasculosa (d) Tunica albuginea
91. Sarcoma is the cancer of  
(a) Epithelium (b) Plasma cells  
(c) Connective tissues (d) Glands
92. The Phase in which two identical copies of DNA are formed is  
(a) G1 phase (b) S phase (c) G2 phase (d) M phase

93. Renin is released from  
 (a) Juxtaglomerular cells (JGCs) of kidney  
 (b) Microglial cells  
 (c) Beta-cells of pancreas  
 (d) Hepatocytes of liver
94. Which of the following cranial nerve is instrumental in motor function  
 (a) Vestibulocochlear (b) Optic  
 (c) Accessory (d) Olfactory
95. Leprosy is a  
 (a) Viral disease (b) Metazoal disease  
 (c) Fungal disease (d) Bacterial disease
96. Salivary amylase helps in digestion of which of the following nutrients  
 (a) Fats (b) Vitamins (c) Proteins (d) Starch
97. The most common neoplasm in patients with AIDS is  
 (a) Acute myeloid leukaemia (b) Adenocarcinoma  
 (c) Kaposi sarcoma (d) Carcinoma of breast
98. Coomb's test is used for detection of  
 (a) Typhoid (b) Antiglobulin  
 (c) Yellow fever (d) Syphilis
99. The fluoroquinolones act by  
 (a) Inhibiting folic acid synthesis, reducing nucleotide production and DNA synthesis  
 (b) Inhibiting ribosomal subunits, leading to the cessation of protein synthesis  
 (c) Disrupting peptidoglycan cross-linking, weakening the bacterial cell wall  
 (d) Inhibiting DNA gyrase and topoisomerase IV, causing supercoiling and fragmentation of bacterial DNA
100. What is the proposed mechanism of action of Artemisinin in the treatment of malaria  
 (a) Blocking of the Plasmodium falciparum ATPase, disrupting ion homeostasis  
 (b) Inhibition of the heme polymerase enzyme, causing accumulation of toxic heme  
 (c) Inhibition of dihydrofolate reductase, interfering with folate synthesis  
 (d) Generation of reactive oxygen species (ROS) by cleavage of the endoperoxide bridge, leading to parasite death.
101. Which of the following is NOT a Class IC anti-arrhythmic drug  
 (a) Propafenone (b) Mexiletine  
 (c) Moricizine (d) Flecainide
102. The amount of air that moves in or out of the lungs with each respiratory cycle is  
 (a) Expiratory reserve volume (b) Tidal volume  
 (c) Inspiratory reserve volume (d) Residual volume
103. The cranial nerve that regulates the heartbeat is  
 (a) VII (b) IX (c) X (d) VIII
104. Which one of the following enzymes comprises a major part of enzyme-linked receptors  
 (a) Receptor Serine Phosphatase  
 (b) Receptor Tyrosine Kinase

- (c) Receptor Histidine Kinase  
 (d) Receptor Threonine Phosphatase

### Pharmacognosy

105. The key intermediate for the biosynthesis of C6-C3 units is  
 (a) Pyruvic acid (b) Dehydroquinic acid  
 (c) Shikimic acid (d) Mevalonic acid
106. The dried juice of *Pterocarpus marsupium* belongs to the family  
 (a) Rosaceae (b) Asteraceae  
 (c) Liliaceae (d) Leguminosae
107. Chikusetsu saponin is present in  
 (a) Senega (b) Ginseng  
 (c) Quillia (d) Liquorice
108. Rancidity of oil is detected by  
 (a) Iodine value (b) Saponification value  
 (c) Peroxide value (d) Acid value
109. What is the best time to collect the medicinal bark material  
 (a) After the leaf falls (b) Post flowering  
 (c) Pre flowering (d) Before the leaf falls
110. The most suitable test for digitoxose is  
 (a) Dragendorff's test (b) Hager's test  
 (c) Keller-Kiliani (d) Baljet test
111. Alfa Alfa belongs to which of the following families  
 (a) Acanthaceae (b) Convolvulaceae  
 (c) Leguminosae (d) Liliaceae
112. Which of the following volatile oils are heavier than water  
 (a) Cinnamon (b) Fennel  
 (c) Cumin (d) Lemongrass
113. The biological name of Indian *Bdellium* is  
 (a) Commiphora molmol (b) Commiphora wightii  
 (c) Commiphora mukul (d) Commiphora berryi
114. Etoposide and Teniposide are the semi-synthetic derivatives of  
 (a) Digoxin (b) Vincristine  
 (c) Podophyllotoxin (d) Taxol

### Other Subjects

115. Match the following disease with their test for detection

Disease	Diagnostic test
P. Tuberculosis	(I) Lepromin test
Q. AIDS	(II) ELISA
R. Syphilis	(III) Mantoux test
S. Leprosy	(IV) Kahn's test

- (a) P-(II), Q-(I), R -(III), S-(IV)  
 (b) P-(I), Q-(II), R- (III), S-(IV)  
 (c) P-(III), Q-(II), R- (IV), S-(I)  
 (d) P-(IV), Q-(II), R -(III), S-(I)

- 116. Which one of the following diseases is caused by the deficiency of niacin**  
 (a) Anemia (b) Pellagra  
 (c) Scurvy (d) Night Blindness
- 117. Which of the following is the best technique for detecting HIV**  
 (a) Real-time PCR  
 (b) Widal test  
 (c) Reverse transcriptase-PCR  
 (d) Polymerase chain reaction
- 118. Histogram can be drawn only for**  
 (a) Continuous frequency distribution  
 (b) Discrete frequency distribution  
 (c) Cumulative frequency distribution  
 (d) Relative frequency distribution
- 119. If one event is unaffected by the outcome of another event, the two events are said to be**  
 (a) Either dependent or independent  
 (b) Dependent  
 (c) Independent  
 (d) Mutually exclusive
- 120. A hypothesis stipulating that there is no difference between the situations, groups and outcomes called**  
 (a) Null hypothesis  
 (b) Hypothesis of association  
 (c) Hypothesis of differences  
 (d) Alternative hypothesis
- 121. Aerobic dehydrogenase in biological oxidation contains**  
 (a) NADP (b) NAD  
 (c) FMN & FAD (d) NADH
- 122. Influenza viruses are RNA viruses and belong to which family**  
 (a) Orthomyxoviridae (b) Papoviridae  
 (c) Retroviridae (d) Parvoviridae
- 123. Which of the following is a causative organism for Syphilis**  
 (a) Clostridium tetani (b) Bacillus pertussis  
 (c) Treponema pallidum (d) Vibrio cholerae
- 124. The optimum temperature for rapid growth of mesophiles is**  
 (a) 40 to 50°C (b) 50 to 60°C  
 (c) 25 to 40°C (d) 15 to 20°C
- 125. Virus mediated transfer of host DNA from one cell to another cell is known as**  
 (a) Transcription (b) Integration  
 (c) Transduction (d) Transformation

### Answer Key

1-c	2-c	3-b	4-c	5-a	6-d	7-d	8-d	9-a	10-b
11-a	12-*	13-a	14-d	15-c	16-c	17-c	18-d	19-c	20-a
21-c	22-c	23-a	24-d	25-b	26-*	27-d	28-b	29-d	30-a
31-b	32-d	33-d	34-d	35-b	36-b	37-d	38-c	39-b	40-a
41-c	42-a	43-c	44-a	45-c	46-b	47-*	48-c	49-c	50-c
51-d	52-a	53-a	54-a	55-b	56-c & d	57-a	58-a	59-b	60-a
61-d	62-b	63-d	64-d	65-b	66-a	67-a	68-c	69-d	70-d
71-b	72-c	73-b	74-a	75-a	76-a	77-a	78-c	79-d	80-b
81-d	82-d	83-d	84-b	85-b	86-c	87-d	88-b	89-c	90-b
91-c	92-b	93-a	94-c	95-d	96-d	97-c	98-b	99-d	100-d
101-b	102-b	103-c	104-b	105-c	106-d	107-b	108-c	109-a	110-c
111-c	112-a	113-b	114-c	115-c	116-b	117-c	118-a	119-c	120-a
121-c	122-a	123-c	124-c	125-c					





**COD AVAILABLE ON**

**Flipkart**



**amazon**

**m**eesho



GATE- 1988-2009, GPAT- 2010-2025


# GPAT PLUS

TOTAL 38 SET QUESTIONS PAPERS

4000+ Questions with Digital Explanation

# 38

## PREVIOUS YEAR PAPER



**FEATURES** // Based on Latest GPAT Syllabus // Designed by Experts

Subject Wise Division // Verified Questions // Digital Explanation

 **Contact for any Query - 6395596959**

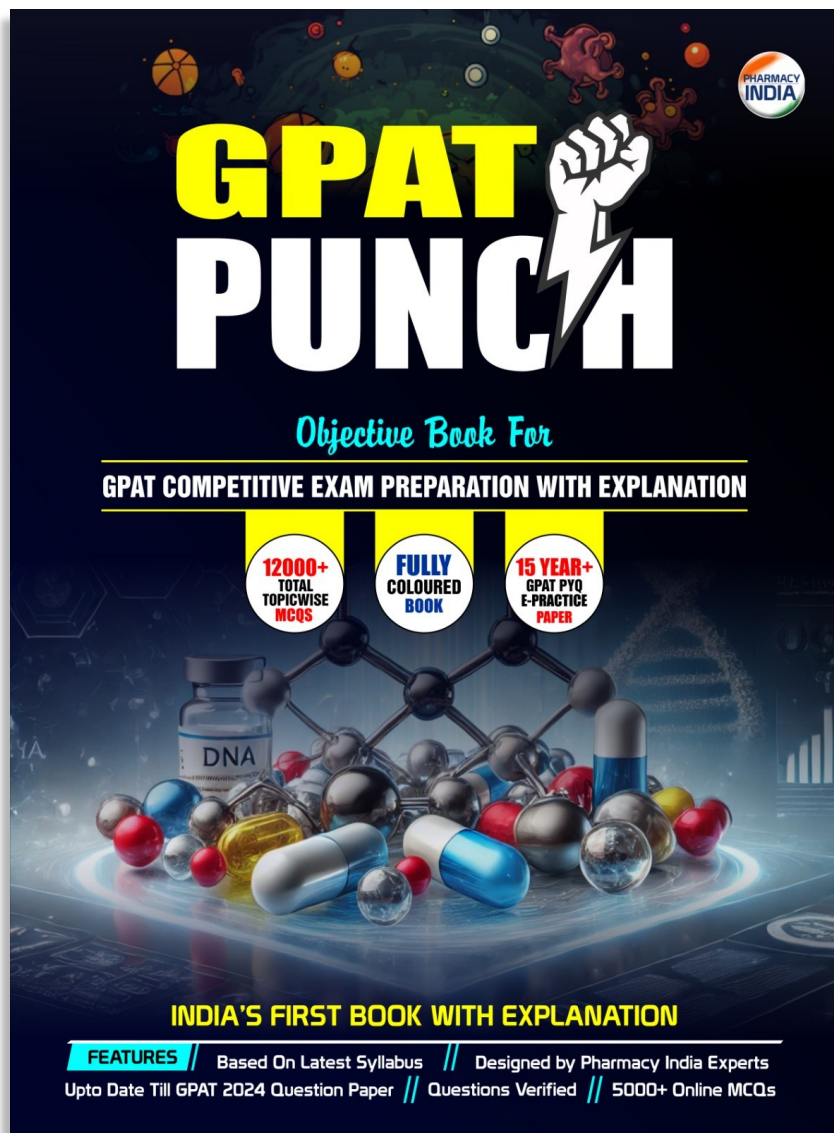


**PHARMACY INDIA**  
[www.pharmacyindia.co.in](http://www.pharmacyindia.co.in)





## BEST BOOK FOR GPAT PREPATRATION



### : Features :

- ⇒ 12,000+ Total Topic-wise MCQs
- ⇒ 15 Year+ GPAT PYQs E- Practice Papers
- ⇒ Full Digital Explanation
- ⇒ Based on Latest Syllabus
- ⇒ Fully Colored Book
- ⇒ India's First Book With Explanation



**Download**

**COD AVAILABLE**

**amazon**

**Flipkart** 



**Contact for**

**Sample Pdf - 9258534641**

**PHARMACY INDIA**





**Join**

**WhatsApp & Telegram Channel**



**PHARMACY INDIA**

[www.pharmacyindia.co.in](http://www.pharmacyindia.co.in)



**Tap and Download PHARMACY INDIA App**



**Scan and Download**

**SCAN ME**



**PHARMACY INDIA**

[www.pharmacyindia.co.in](http://www.pharmacyindia.co.in)