

TABLET(POLYMERS)

1. Core tablet coated with cellulose acetate phthalate has been administered to a patient.

Where do you expect the drug to be released

- (a) Intestine (b) Liver (c) Stomach (d) Oral cavity

2. Which is an example of non-enteric film former polymer [GPAT-2016]

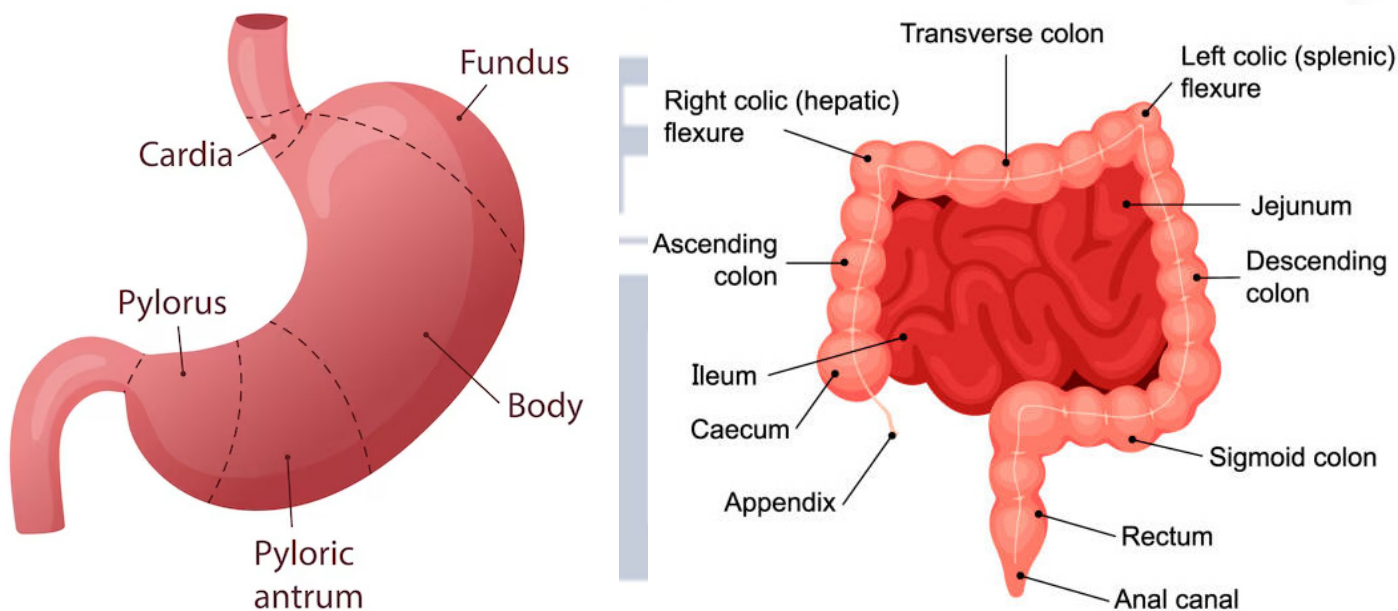
- (a) Ethyl cellulose (b) CAP (c) PVAP (d) Both (a) and

3. Diclofenac tablet coated with cellulose acetate phthalate has been administered to a patient. Where do you expect the drug to be released [GATE-2000]

- (a) Stomach (b) Oral cavity (c) Small intestine (d) Liver

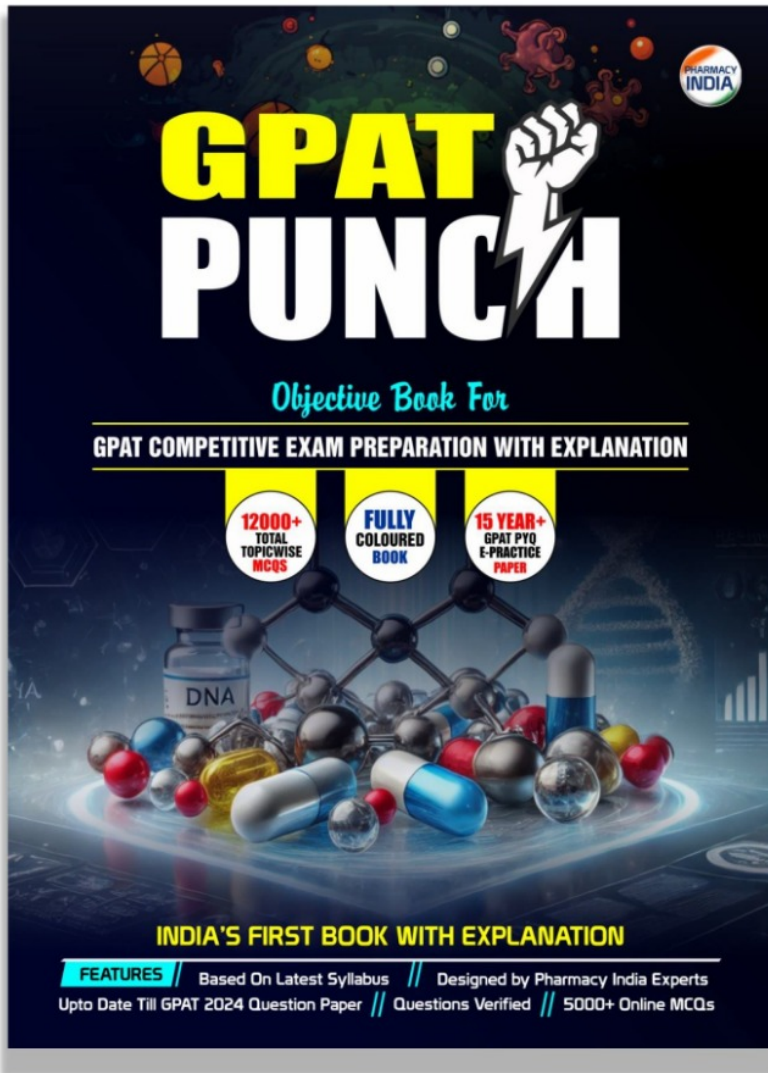
• Film Coating

Type of Film Coating	Key Polymers Used	
Non-enteric Film Coating (Immediate Release)	<ul style="list-style-type: none"> Methylcellulose (MC), Hydroxypropyl Cellulose (HPC), Polyvinylpyrrolidone (PVP), MHEC (Methyl hydroxyl ethyl cellulose), EC (Ethyl cellulose), 	<ul style="list-style-type: none"> HPC (Hydroxy propyl cellulose), Povidone, SCMC, PG, Acrylate Polymers
Enteric Film Coating (Delayed Release)	<p>Cellulose Acetate Phthalate (CAP). Other polymers include: Acrylate Polymers (Eudragit® series), Hydroxypropyl Methylcellulose Phthalate (HPMCP), Polyvinyl Acetate Phthalate (PVAP).</p>	<p>Gelatin solution is not used for enteric coating.</p>





BEST BOOK FOR GPAT PREPATRATION



: Features :

- ⇒ 12,000+ Total Topic-wise MCQs
- ⇒ 15 Year+ GPAT PYQs E- Practice Papers
- ⇒ Full Digital Explanation
- ⇒ Based on Latest Syllabus
- ⇒ Fully Colored Book
- ⇒ India's First Book With Explanation



Download

COD AVAILABLE

amazon

Flipkart 



Contact for

Sample Pdf - 9258534641

PHARMACY INDIA



Tap and Download PHARMACY INDIA App

PHARMACY INDIA

PHARMACY INDIA
Pharma Success Stories
DRI + NIPER + DRUG INSPECTOR + PHARMACIST

Download
PHARMACY INDIA
App from Play Store

Scan and Download

SCAN ME

PHARMACY INDIA



Join

WhatsApp & Telegram Channel



PHARMACY INDIA

www.pharmacyindia.co.in